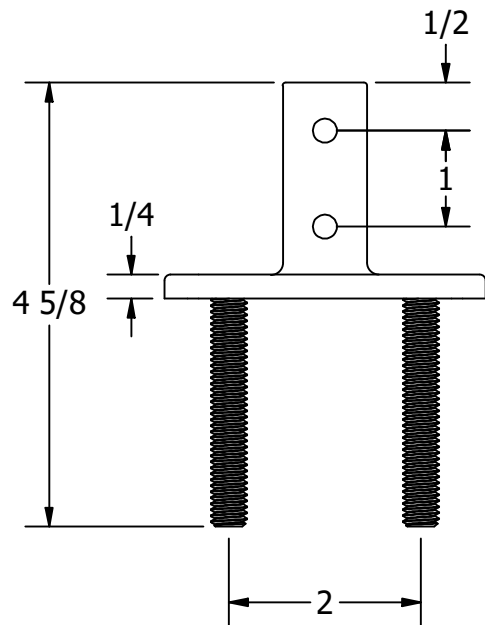
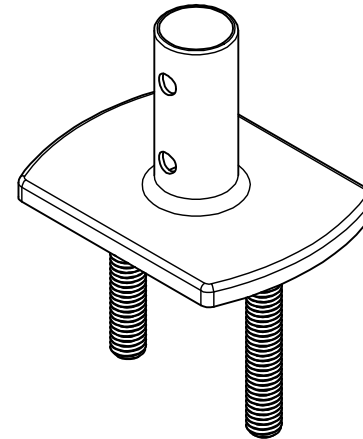
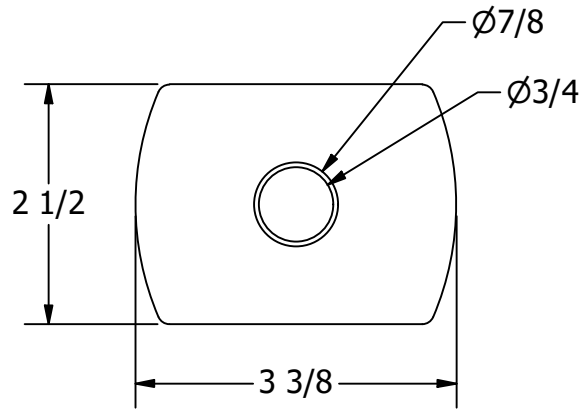


# FOR REFERENCE ONLY

NOTE:  
316 STAINLESS STEEL  
HIGH POLISH FINISH



UNLESS OTHERWISE SPECIFIED:  
BREAK ALL SHARP EDGES  
DIMENSIONS ARE IN INCHES  
TOLERANCES:  
FRACTIONAL:  $\pm 1/16$   
DECIMAL: X.X  $\pm .05$   
          X.XX  $\pm .01$   
          X.XXX  $\pm .005$   
ANGULAR:  $\pm 1^\circ$   
FINISH: 120Ra



**WHITE WATER**  
MARINE HARDWARE

TITLE  
316 SS CAST STANCHION BASE STUDDED  
PART NUMBER: 6018S

**PROPRIETARY AND CONFIDENTIAL**  
THE INFORMATION CONTAINED IN THIS  
DRAWING IS THE SOLE PROPERTY OF WHITE  
WATER MARINE HARDWARE. ANY REPRODUCTION  
IN PART OR AS A WHOLE WITHOUT WRITTEN  
PERMISSION IS PROHIBITED.

SIZE A	DRAWING NO. WWMH-6018S	REV 0
SCALE 1 / 2	DRAWN RC	DATE 8/7/2024
		SHEET 1 OF 1