



WHITE WATER

MARINE HARDWARE





About Us



White Water Marine Hardware and Marine Depot have been in the business of innovative product design and manufacturing for over 30 years. We began as an OEM for boat builders and later saw the need to provide manufacturing support to local marine hardware companies, dealers, and retailers.

In addition to our boat yards in China, we own and operate five manufacturing companies which enables us to provide our customers with the most competitive pricing for aluminum, SS 316 and SS 304 precision foundry parts, brass, bronze, sand-cast parts, as well as plastic-injection molded components.

With warehouses on both the East Coast and the West Coast, we are able to minimize freight costs and provide our customers with a seamless supply of products.

For the last 30 years we've provided offshore manufacturing support to marine OEMs such as Accon Marine, Taco Metal, Uflex, Lewmar and Southcoast Marine Products. We supply products and services to boat builders such as the Brunswick Boat Group, Carolina Skiff, Regal Marine, Bombardier Recreational Products, Island Packet, and Sabre Yachts.

We are proud to say that we truly have an understanding of our customers needs. We offer unfailing quality and timely delivery at truly competitive prices.

MANUFACTURING CAPABILITIES

We own and operate several manufacturing facilities in China. Our manufacturing capabilities include:

- Precision Casting in SS, Aluminum, Brass and Bronze
- Metal Fabrication
- CNC Machining
- Some Plastic Injection Molding
- Welding
- Polish, Passivation, and other types of metal finish

RETAIL DISPLAY PACKAGING AND BARCODING

Retailers and distributors may purchase items in retail display packaging. Retail display packaged items are identified by a "-1" on the price list.

Standard display packaging may consist of injection molded shell packs with logo and part number inserts, injection molded shells with logo card backs, and poly bags with card headers. Some items already include UPC Barcodes.

In addition to our custom hardware manufacturing services, we also offer custom-retail packaging and assembly services. For more information about this and other services we offer, please feel free to contact your account manager.

**CREDIT:**

Firms with satisfactory commercial credit ratings are qualified for open accounts. Others may apply for open accounts by listing the name of an active bank account and three credit references. Alternatively, orders may be shipped via COD in order to avoid delay.

White Water Marine Hardware and Marine Depot reserve the right to change or revoke credit terms contingent upon the customer's payment history. Notice will be provided to the customer of any changes in credit terms.

CLAIMS:

It is the responsibility of the carrier for damages or loss of products while in transit. In case of such shortage or damage, the carrier should be contacted and claims should be filed with the carrier immediately. Claim processes may vary from carrier to carrier.

All claims for shortage or damage must be filed within 7 days upon receipt of goods.

PRODUCTS, CONTENT, AND SPECIFICATIONS:

We reserve the right to improve items contained within this catalog without prior notification. Although we strive to ensure that product information within our catalog is correct, typographical errors may occur and provide you with inaccurate or incomplete information. Similarly, all features, content, specifications, of products described within this catalog are subject to change at any time without notice. Certain weights, measures and descriptions are approximate and are provided for your convenience purpose only.

RETURNS and EXCHANGES:

No credit will be given for products returned without our authorization.

Returns of product must be in the original condition and packaging that it was shipped. Include a copy of the packing slip or invoice with your return authorization number

Handling and re-stocking fee schedule:

1. 15% Handling and re-stocking fee: Items returned after 30 days
2. 35% Handling and re-stocking fee: Items returned after 90 days

Returns may be processed up to 1 year after the purchase date.
Exceptions will be made for defective products.

**WARRANTY:**

For products of 316 Stainless Steel made by investment casting, White Water Marine Hardware and Marine Depot, Inc. warrant to the original consumer purchaser that the hardware will be free from corrosion, under normal use and service, for the life of the boat on which the product is originally installed.

Products made of 304 Stainless Steel, Bronze or Brass will be free from defects in materials and workmanship under normal use and service, for a period of one (1) year.

This limited warranty is not applicable if the hardware is damaged by accident, improper installation, unreasonable use, lack of proper maintenance, unauthorized repair or modification, or any other causes not arising out of defects in material and/or workmanship.

Under this warranty, White Water Marine Hardware and Marine Depot's obligations are limited to repair of the product at White Water Marine Hardware and Marine Depot's plant, or replacement of the product at White Water Marine Hardware and Marine Depot's discretion and at White Water Marine Hardware or Marine Depot's expense. Any expenses involved in the removal, reinstallation, or transportation of the products are not covered by this warranty.

The product in question has to be returned to White Water Marine Hardware or Marine Depot via shipment options approved and agreed on by either White Water Marine Hardware or Marine Depot. Returns must also include a copy of the original invoice. The acceptance by White Water Marine Hardware or Marine Depot of any product returned shall not be deemed an admission of the defect of product or violation of the warranty.

This document contains White Water Marine Hardware and Marine Depot, Inc.'s only express warranty of the product. This warranty is expressly made in lieu of any other incidental or consequential costs, expenses or damages.

This warranty gives the purchaser specific legal rights, and the purchaser may also have other rights which vary from state to state.

CONTACT US**WEST COAST**

MARINE DEPOT, INC.
14716 Central Avenue
Chino, CA 91710
Tel: (888) 709-5338
Fax: (909) 393-2009

EAST COAST

WHITE WATER MARINE HARDWARE, INC.
13663 Automobile Boulevard
Clearwater, FL 33762
Tel: (800) 572-8871
Fax: (727) 572-1211



Authorized Distributor of Man Ship Marine



In addition to manufacturing quality marine hardware, we are proud distributors of Man Ship Marine Hardware. Man Ship Machinery and Hardware Co., Ltd. has been a well-known and respected manufacturer of chandlery and hardware for the boatbuilding industry since 1982.

Internationally known and respected for their outstanding quality, Man Ship manufactures:

- Stainless Steel Ports
- Stainless Steel Doors
- Companion-Way Hatches
- Aluminum Boat windows
- Heavy-Duty Windows for Steel Boats

CUSTOM ORDERS

We carry a standard line of hatches, ports, and accessories. Custom-orders on all other Man Ship products not found in this catalog are welcome.

FOR MORE INFORMATION

For more information about Man Ship products, please visit: www.manshipmarine.com and contact your account manager for ordering assistance.

Man Ship Machinery provides a 5-year warranty for defective material and workmanship to the original consumer provided the product has not been misused, altered, or damaged by accident.



TABLE OF CONTENTS

ANTENNA ACCESSORIES	1-5
Antenna Mounts, Brackets, and Extensions	
Shims, Cable Outlets, Laydown Hook, Microphone Clips, Pitot Tube Shield	
FISHING EQUIPMENT	6-10
Stainless Steel Rod Holders	
Nylon Rod Holders and Fillers	
Clamp-on and Removable Rod Holders	
Outrigger Pole Holders & Storage Racks	
Fishing Gimbals	
ANCHORING AND MOORING EQUIPMENT	11-19
Anchor Rollers and Wheel Replacements	
Anchor Swivels and Chain Tensioner	
Deck Pipes	
Hawse Pipes	
BOARDING HARDWARE	20-23, 62
Telescoping Ladders	
Transom Ladders	
Sliding Ladders	
Under Platform Mount	
Replacement Gudgeons	
Deck Steps	
Swim Platform Bracket	
CLEATS, CHOCKS, LIFTING EYE, SKI- TOWS, PAD EYES	24-30
Humpback, Stud, Herreshoff, Mooring Cleats	
Skene, Bow, Angled Chocks	
Lifting Eye and Sling	
Bow and Stern Eye	
Ski Tow	
Pad Eyes	
CANVAS TOP FITTINGS AND ACCESSORIES	30-32, 40-43, 99
Eye Strap	
Jaw Slides	
Top Cap/ Outside Eye Ends	
Top Inserts / Inside Eye Ends	
Deck Hinge	
Toggle and Quick Release Pins	
Bimini Top Tie Downs	
Cover Support Poles	
RAIL FITTINGS	33-39, 44-45
Rail Base w/ Set Screw	
Welding Base	
Tee, Elbow, Bow Form	
Handrail Stanchion, Stanchion Cap and Base	
Handrails	

TABLE OF CONTENTS

RUB RAILS - STAINLESS STEEL	46-47
hollow Back	
Half-Oval	
Rub Strakes	
DOOR & CABINET HARDWARE, AND BRACKETS	48-62
Hinges	
Door Holders, Hooks, Stops, Buttons, Bolts, Hasp	
Door Lock Sets	
Sliding Door Lock Set	
Chair and Table Brackets	
STEERING WHEELS AND ENGINE CONTROLS	64-67
Heavy Duty Steering Wheels	
Sport Wheels	
Destroyer Wheels	
Sailboat Wheels	
Shaft Adapters	
Control Knobs	
Engine Controls	
PORTLIGHTS AND DECK HATCHES	68-71
Rectangular Opening Ports - Stainless Steel	
Luxury Deck Hatches - Stainless Steel	
Other Stainless Steel Portlights	
Bronze Portlights	
HATCH FITTINGS	63, 72-74,
Ring Pulls and Lift Handles	
Spring Holders and Adjuster	
Hatch Cover Pull	
Hatch Fasteners	
Turning Lock Lift Handle	
Flush Pull Latch	
Grab Handle	
VENTILATION, FUEL FITTINGS AND DRAINAGE	75-79
Bilge Blowers	
Cowl Vents and Deck Plates	
Midget, Butterfly, Louvered, Slotted Vents	
Drain Cover	
Deck Fills	
Fuel Vents	
Thru-Hulls	
Exhaust Pipes	
Pipe-to-Hose Adapter	
Intake Strainers	
Drain Plugs	

TABLE OF CONTENTS

LIGHTING FIXTURES AND ELECTRICAL ACCESSORIES

90-95

- Navigation Lights
- Reading and Interior Lights
- Spreader Lights
- LED Courtesy Lights
- Replacement Light Switches and Bulbs
- Electrical Connectors
- Cigarette / Chart Lights
- Battery ON/OFF Switches

MISCELLANEOUS HARDWARE

96-98, 100-103

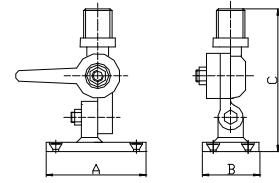
- Drink Holders and Ashtrays
- Boat Hooks, Brackets, and Clips
- Horns and Bells
- Splicing Fids, Commision Logs, Flag Staff, Rail Mount Brackets
- Universal Deck Fill and Shackle Keys
- Motor Flushers and Outboard Motor Brackets
- Pelican Hooks, Wheel Bearing Protectors, and Winch Cables

Reinforced Nylon 4-way Ratchet Mount



- ▼ Standard 1"-14 male threads.
- ▼ With thru hole for VHF or GPS cables.

PART NO.	A	B	C
6506N	3-5/8"	2-9/16"	4-3/4"

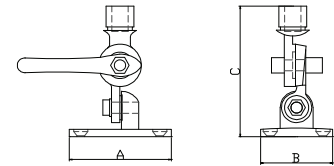


SS 316 Cast Economic 4-way Ratchet Mount



- ▼ Can self-support antennas up to 15 feet in length.
- ▼ Standard 1"-14 male threads.
- ▼ With thru hole for VHF or GPS cables.

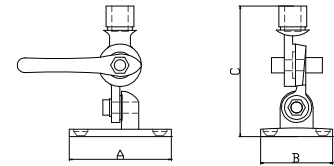
PART NO.	A	B	C
6508S	3-5/8"	2-9/16"	4-1/2"



SS 316 Cast Heavy Duty 4-way Ratchet Mount



PART NO.	A	B	C
6510S	3-1/2"	2-1/2"	4-1/2"

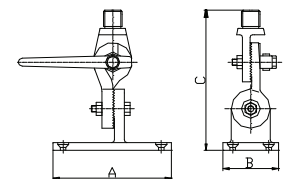


SS 316 Cast Heavy Duty 4-way Ratchet Mount



- ▼ Popular for its versatile four-way design.
- ▼ Standard 1"-14 male threads.
- ▼ With thru hole for VHF or GPS cables.

PART NO.	A	B	C
6520S	3-3/4"	2-1/4"	6"

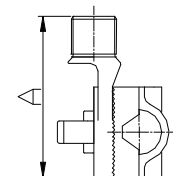


SS 316 Cast Rail Mount



- ▼ Standard 1"-14 male threads.
- ▼ With hole for VHF or GPS cables.
- ▼ Mount is capable of adjusting a full 360 degrees

PART NO.	A	RAIL SIZE
6522S	3-7/16"	7/8" and 1"
6522S-L	3-7/16"	1-1/4" and 1-1/2"



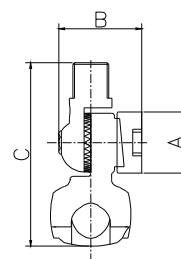
Nylon Rail Mount



- Mount uses 4 screws to provide extra security when attached to 7/8" and 1" rails.
- Standard 1"-14 male threads.

PART NO.	A	B	C
6524N	1-5/8"	2-3/16"	4-29/32"

Antenna Mount

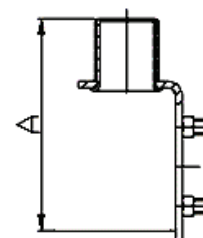


SS 304 Rail Mount Up to 2" Rail



- Standard 1"-14 male threads.

PART NO.	A	RAIL SIZE
6525S	4-5/16"	1-1/2" and 2"

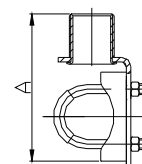


SS 304 Rail Mount Antenna Base



- Adjustable Mounts accommodate 7/8" - 1" Rails.
- Versatile Horizontal and Vertical Mounting application
- May be used for flat surface mounting

PART NO.	A	RAIL SIZE
6526S	3-13/32"	7/8" and 1"

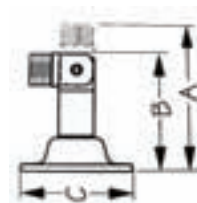


SS 316 Swivel Mount



- Recommended for use with **6529N**.
- Standard 1"-14 male threads.

PART NO.	A	B	C
6527S	4-9/16"	3-19/32"	3-11/32"

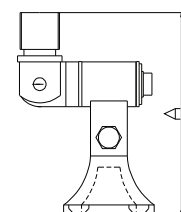


SS 316 Swivel Mount



- Recommended for use with **6529N**.
- Standard 1"-14 male threads.

PART NO.	A	BASE SIZE
6528S	5"	3-21/32" x 2-7/32"



Nylon Upper Standoff Bracket



- Upper standoff bracket for high-dB VHF antennas and SSB antennas.
- Mounting hardware/screws are included.
- Standoff Bracket extends 4" from base to edge of antenna

PART NO.	DESCRIPTION
6529N	Plastic bracket with inserts for 1", 1-1/8", 1-1/4", 1-1/2"

Adjustable Standoff Extension with SS Base



- Consists of two SS fittings. One attaches to the flying-bridge or upper part of your boat's structure, the other attaches to an upper antenna bracket such as the **6529N**.
- With adjustable distance from 3-9".

PART NO.	DESCRIPTION
6530S	8" SS support extension with SS base

Adjustable Standoff Extension with Nylon Base



- Consists of two nylon fittings. One attaches to the fly-bridge or upper part of your boat's structure, the other attaches to an upper antenna bracket such as the **6529N**.
- With adjustable distance from 3-9".

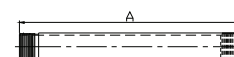
PART NO.	DESCRIPTION
6530N	8" SS support extension with Nylon base

SS 304 Antenna Mount Extension Tube



- Stainless steel extension tubes with 1"-14 male and female threads to fit 1"-14 antenna mounts and tubes.

PART NO.	A
6531S	6"
6532S	12"
6533S	24"

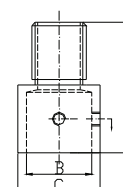


SS 316 Cast Tube Base Antenna Mount



- Can be used with any 1" O.D. stainless tubing allowing custom antenna mounts.
- Standard 1"-14 male threads.

PART NO.	A	B	C
6534S	2"	1"	1-1/4"

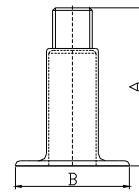


SS 304 Fixed Antenna Base



- ▼ Designed for TV OR GPS antennas.
- ▼ It allows antenna wire to feed directly through the base eliminating the need for a separate cable grommet.
- ▼ Standard 1"-14 male threads.

PART NO.	A	B
6535S	4"	2-7/8"

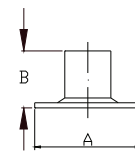


Nylon Fixed Antenna Base



- ▼ Standard 1"-14 male threads.
- ▼ Injection molded nylon.

PART NO.	A	B
6538N	2-3/4"	1-5/8"

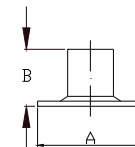


SS 304 Fixed Antenna Base



- ▼ Standard 1"-14 male threads.

PART NO.	A	B
6538S	2-3/4"	1-5/8"

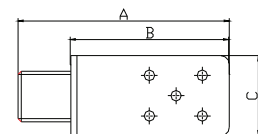


SS 304 Vertical Antenna Mount



- ▼ SS vertical mount for sail mast with an opening for Loran or GPS cables.
- ▼ Standard 1"-14 male threads.

PART NO.	A	B	C
6548S	4"	3"	1-1/2"

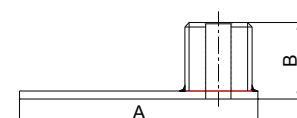


SS 304 Horizontal Antenna Mount



- ▼ SS horizontal mount for mast top with an opening for Loran or GPS cables.
- ▼ Standard 1"-14 male threads.

PART NO.	A	B
6549S	3-1/2"	1-3/32"

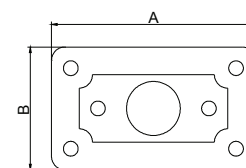


Long Taper Plastic Shim



- Plastic shim for sloped deck.
- Long taper.

PART NO.	A	B
6552N	3-5/8"	2-5/32"



Short Taper Plastic Shim



- Plastic shim for sloping deck,
- Short taper.

PART NO.	A	B
6554N	3-5/8"	2-5/32"



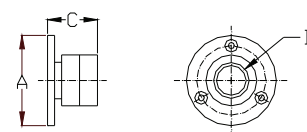
6552N

6554N

Chrome-Plated Brass Cable Outlet



PART NO.	A	B	C
6556BC	1-1/4"	1/4"	5/8"
6558BC	1-1/2"	3/8"	11/16"

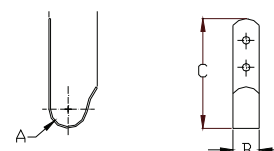


Heavy Duty Laydown Antenna Hook



- 1/8" thickness
- Stamped 304 Stainless

PART NO.	A	B	C
6560S	1-3/4"	1-1/4"	3-13/16"

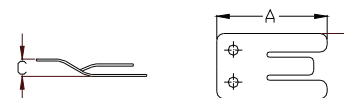


Microphone Clip



- Stamped 304 Stainless

PART NO.	A	B	C
6562S	1-7/8"	1"	3/8"



Pitot Tube Shield



- Stamped 304 Stainless
- Can protect wiring for items such as depth sounders, speedometers and coax cables.

PART NO.	A	B	C	D
6568S	1-1/4"	3/4"	3/8"	7/8"



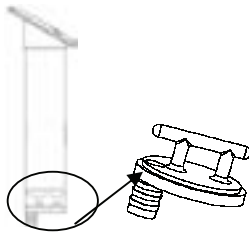
SS 304 Slimline Rod Holder—Perfect for Limited Space

- ▼ Polished flange, oblong shape
- ▼ This rod holder is designed to create additional storage space for fishing rods.

PART NO.	FLANGE LENGTH	FLANGE WIDTH	TUBE I.D.	TUBE LENGTH	ANGLE DEGREE
53310S	3-15/32"	2-5/16"	1-1/2"	8-1/2"	15

SS Cast Flush Mount Rod Holder—Heavy Duty, Top Quality Line**53320S****53322S**

- ▼ SS 316 cast flange, round shape, 4" DIA.
- ▼ SS 304 polished tube, 2" O.D.
- ▼ Heavy duty white PVC liner, 1-1/2" I.D.
- ▼ Closed bottom type with 1/2" tube drain tail.
- ▼ Aftermarket shell packaging available.

**53320SC****1/2" Drain Tail**

PART NO.	ANGLE DEGREE	BOTTOM
53320S	30	Open
53321S	15	Open
53322S	0	Open
53320SC	30	Closed
53321SC	15	Closed
53322SC	0	Closed

SS Cast Flush Mount Rod Holder—Standard Quality Line

- ▼ SS 316 cast flange, oblong shape, 3-9/16"×4-3/16"
- ▼ SS 304 polished tube, 2" O.D.
- ▼ Heavy duty white PVC liner, 1-1/2" I.D.

PART NO.	ANGLE DEGREE	BOTTOM
53315S	30	Open
53316S	15	Open



SS Cast Flush Mount Rod Holder—Standard Quality Line

- ▼ SS 316 cast flange, round shape, 3-1/2" DIA.
- ▼ SS 304 polished tube, 2" O.D.
- ▼ Heavy duty white PVC liner, 1-1/2" I.D.

PART NO.	ANGLE DEGREE	BOTTOM OPEN
53317S	0	Open

***SS Cast Flush Mount Rod Holder—Black PVC Liner***

- ▼ SS 316 cast flange, oblong shape, 3-5/16"×4-3/16"
- ▼ SS 304 polished tube, 2" O.D.
- ▼ Black PVC liner, 1-5/8" I.D.
- ▼ Replaceable UV resistant PVC cap.

PART NO.	ANGLE DEGREE	PVC CAP
56136SP	30	Yes
56136SP15	15	Yes
56136SP00	0	Yes
56136SPC	Replacement PVC cap only for 56136SP	
56136SPC15	Replacement PVC cap only for 56136SP15	
56136SPC00	Replacement PVC cap only for 56136SP00	
56135SP	30	No
56135SP15	15	No
56135SP00	0	No

***SS 316 Flush Mount Rod Holder—Heavy Duty***

PART NO.	FLANGE SIZE	TUBE LENGTH	TUBE I.D.
56138S	3-15/16" x 4-7/8"	11"	2"
56138SR	Replacement liner		

***SS 304 Stamped Flush Mount Rod Holder—Black PVC Liner***

PART NO.	FLANGE SIZE	TUBE LENGTH	TUBE I.D.
57738S	3-1/2" x 4-9/16"	9"	1-1/2"
57738SR	Replacement liner		



SS 304 Stamped Flush Mount Rod Holder—Black PVC Liner w/ Cap

PART NO.	FLANGE SIZE	TUBE LENGTH	TUBE I.D.
57739S	3-1/16" x 4-9/16"	9"	1-1/2"
57739SR	Replacement liner		

**ABS Flush Mount Rod Holder**

- UV Stabilized

PART NO.	TUBE LENGTH	TUBE I.D.	COLOR
50100W	9-1/2"	1-5/8"	White
50100B	9-1/2"	1-5/8"	Black

**White PVC Liner for 2" Rod Holder**

PART NO.	I.D.	ANGLE DEGREE
53340P	1-1/2"	30 or 15
53341P	1-1/2"	0

**Black Nylon Filler for 2" Rod Holder**

- Used for collection and drainage of water in rod holder.
- Barbed Nose for insertion into a drain tube.

PART NO.	BODY I.D.	TAIL O.D.
53341NF	2"	7/16"

**SS Clamp-on Adjustable Rod Holder**

- Versatile rod holder design allows a full 360 deg. adjustment.
- High polished SS tube with a white plastic liner to protect your rods.
- For 3/4"—1-1/4" tube.

PART NO.	CLAMP	TUBE	TUBE LENGTH	TUBE I.D.
53300SL	SS 316	SS 304	9-1/2"	1-3/4"

**SS Clamp-On Adjustable Rod Holder**

- Versatile rod holder design allows a full 360 deg. adjustment.
- High polished SS tube with a black plastic liner to protect your rods.
- For 7/8"—1" tube.

PART NO.	CLAMP	TUBE	TUBE LENGTH	TUBE I.D.
53301SS	SS 316	SS 304	9"	1-5/8"



SS Removable Rod Holder

PART NO.	MOUNT BRACKET	TUBE I.D.	TUBE LENGTH
53302S	4"x 3-3/4"	1-5/8"	8-1/2"
53302SC	Black rubber insert only		
53302SH	Holder only		
53302SB	Mount plate only		

***Outrigger Pole Holders with Spring Lock (In Pairs)***

- ▼ SS316 Cast, heavy duty.
- ▼ Flush mount.
- ▼ Uses 1/4" mounting bolts.
- ▼ Compatible with all outrigger poles with 1-1/8" butt diameter.

PART NO.	BASE FLANGE
53305S	2-1/2" × 5-1/16"
53305SB	Base only
53305SH	Holder only

***SS 304 Double Tube Rod Storage Racks***

- ▼ Designed with Knife, Pliers, and Lure holders.

PART NO.	LENGTH	HEIGHT	DEPTH	TUBE I.D.
53230S	11"	9-1/4"	3"	1-5/8"

***SS 304 Triple Tube Rod Storage Racks***

- ▼ Designed with Knife, Pliers, and Lure holders.

PART NO.	LENGTH	HEIGHT	DEPTH	TUBE I.D.
53232S	13-1/2"	9-1/4"	3"	1-5/8"

***Polypropylene Single Rod Storage Tube***

- ▼ UV Stabilized
- ▼ With square mounting bracket on the back.
- ▼ Replacement holder for **53220N** and **53222N**.

PART NO.	TUBE LENGTH	TUBE I.D.
50120W	12"	1-3/4"



Polypropylene Double Tube Rod Storage Racks

- ▼ UV Stabilized
- ▼ With Knife, Pliers, and Lure holders.

PART NO.	LENGTH	HEIGHT	DEPTH	TUBE I.D.
53220N	8-3/4"	12"	2-5/8"	1-3/4"



Polypropylene Triple Tube Rod Storage Racks

- ▼ UV Stabilized
- ▼ With Knife, Pliers, and Lure holders.

PART NO.	LENGTH	HEIGHT	DEPTH	TUBE I.D.
53222N	12-7/8"	12"	2-5/8"	1-3/4"



SS 304 Fishing Chair Rod Gimbal

- ▼ Highly polished stainless steel four-way swivel
- ▼ Mounting hardware fits 1" chair tubing.

PART NO.	TUBE	HEIGHT	WIDTH
50015S	1"	3-1/8"	3-7/8"



SS 304 Fishing Chair Rod Gimbal—Flat Plate

- ▼ Highly polish stainless steel four-way swivel.
- ▼ Mount under wood and plastic bases of chairs.

PART NO.	TUBE	HEIGHT	SCREW HOLE DISTANCE	FLAT WIDTH
50016S	1"	3-1/8"	2-3/8"	4-1/8"



SS 316 Cast Anchor Roller with SS Roller

- ▼ Rope dimension up to 1"

PART NO.	LENGTH	WIDTH	ROLLER SIZE
ARCS-01	7-7/8"	2-3/8"	1-7/8" x 2-5/16"

**SS 304 Anchor Roller**

PART NO.	LENGTH	WIDTH	ROLLER SIZE
ARSST-01	7-3/4"	2-5/8"	2"x1-1/2"
ARSST-02	8-3/4"	2-5/8"	2"x1-1/2"

**SS 304 Small Fairlead Anchor Roller**

PART NO.	THICKNESS	SURFACE TREATMENT	LENGTH	WIDTH	ROLLER SIZE
ARSW-02	5/32"	Electro polished	6-1/4"	2"	1-3/4"x2-1/2"
AR7550S	5/64"	Mirror polished	6-1/4"	2"	1-3/4"x2-1/2"

**SS 304 Medium Fairlead Anchor Roller**

PART NO.	THICKNESS	SURFACE TREATMENT	LENGTH	WIDTH	ROLLER SIZE
ARSW-07	1/8"	Mirror polished	9-1/2"	2-1/8"	1-3/4"x2-1/2"

**SS 304 Long Fairlead Anchor Roller**

PART NO.	THICKNESS	SURFACE TREATMENT	LENGTH	WIDTH	ROLLER SIZE
ARSW-03	5/32"	Electro polished	11"	2-1/8"	1-3/4"x2-1/2"
AR7552S	1/8"	Mirror polished	11"	2-1/8"	1-3/4"x2-1/2"



SS 304 Small Anchor Roller

PART NO.	THICK-NESS	SURFACE TREATMENT	LENGTH	LENGTH W/BAIL	WIDTH	ROLLER SIZE
ARWU-02	5/32"	Mirror polished	15-1/4"	16"	2-1/16"	1-3/4"x2-1/2"

**SS 304 Small Anchor Roller**

PART NO.	THICK-NESS	SURFACE TREATMENT	LENGTH	LENGTH W/BAIL	WIDTH	ROLLER SIZE
AR7557S	1/8"	Electro polished	15-1/4"	16"	2-1/16"	1-3/4"x2-1/2"

**SS 304 Medium Anchor Roller**

PART NO.	SURFACE TREATMENT	LENGTH	LENGTH W/BAIL	WIDTH	ROLLER SIZE
ARWU-04	Electro polished	18"	19"	3-1/2"	3"x3"

**SS 304 Narrow Anchor Roller**

PART NO.	SURFACE TREATMENT	LENGTH	LENGTH W/BAIL	WIDTH	ROLLER SIZE
ARWC-01	Electro polished	19-7/8"	21-7/8"	3-1/8"	2-1/2"x2-3/4"

**SS 304 Pivoting Anchor Roller**

PART NO.	SURFACE TREATMENT	LENGTH	LENGTH W/BAIL	WIDTH	ROLLER SIZE
AR7561S	Mirror polished	20-1/2"	22-3/4"	2-1/2"	2"x2-7/8"

**SS 304 Platform Anchor Roller**

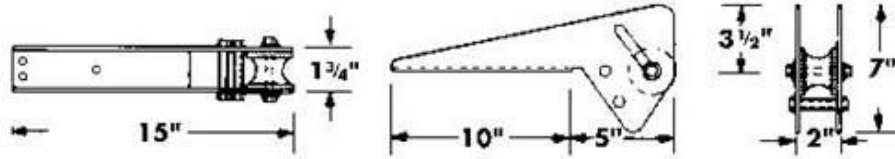
PART NO.	SURFACE TREATMENT	LENGTH	LENGTH W/BAIL	WIDTH	ROLLER SIZE
ARWU-03	Electro polished	23-3/4"	26"	3-15/16"	3"x3-3/8"



SS 304 Platform Anchor Roller

Part No. ARWB-02

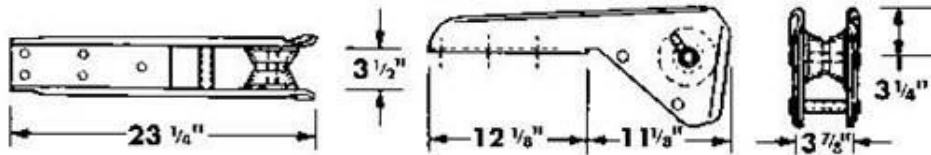
▼ Electro polished



SS 304 Platform Anchor Roller

Part No. ARWB-03

▼ Electro polished



SS 304 Platform Anchor Roller

PART NO.	SURFACE TREATMENT	ROLLER WIDTH	ROLLER DIA.	DEPTH	HEIGHT
ARSW-04	Electro polished	1-3/4"	2-1/2"	3"	6"
ARSW-05	Electro polished	3-3/8"	3"	3"	6"
ARSW-06	Electro polished	3-3/8"	3"	5-1/2"	4"



Replacement Wheels for Anchor Rollers

PART NO.	COLOR	WIDTH	DIA.	ANCHOR MODEL
7550U	Black	1-3/4"	2-1/2"	AR7550S, ARSW-02, ARWU-02, ARWB-02, AR7552S, AR7557S
7551U-A	White	2-9/16"	2-1/2"	Front/Big roller for AR7561S
7551U-B	White	2-11/16"	1"	Rear/Small roller for AR7561S
7558U	Black	3"	3"	ARWU-04
7560U	Black	2-1/2"	2-3/4"	ARWC-01
7564U	Black	3-3/8"	3"	ARWU-03, ARSW-05

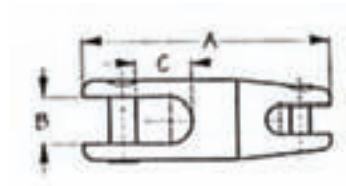


7550U



7551U-A

7551U-B

SS 316 Anchor Swivel

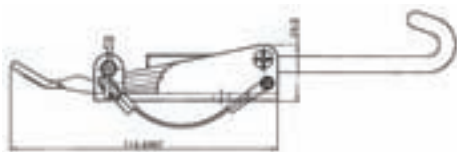
PART NO.	A	B	C	CHAIN SIZE	WORKING LOAD
AS7530S	3-9/16"	5/8"	13/16"	1/4"—5/16"	4500lb
AS7532S	4-11/16"	13/16"	1-1/16"	5/16"—1/2"	7000lb
AS7536S	5-1/2"	1-1/8"	1-3/16"	1/2"—5/8"	10000lb

SS 316 Anchor Swivel with Lock Pin**Part No. AS7538S**

- Chain size: 1/4"-5/16"

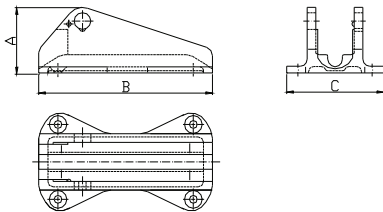
**SS 304 Anchor Chain Tensioner****Part No. AS7540S**

- Electro polished.
- Holds chain up to 3/8" firmly to keep your anchor quiet on its roller.
- A quick-release pin holds the handle securely.
- Working load: 700lbs.

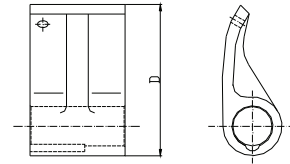


SS 316 Deluxe Chain Stopper

- Works with your anchor roller to take the tension off your windlass.
- Mounts alone or inside most anchor rollers.
- Fits 1/4" to 3/8" chain.
- Removable pawl flips up when not in use.
- Prevents damage to windlass.
- The groove in the pawl fits the detent of the pin. It helps flipping the pawl up and down.



THE BASE

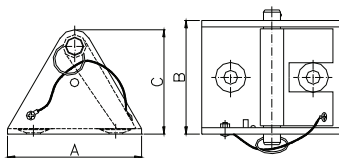


THE PAWL

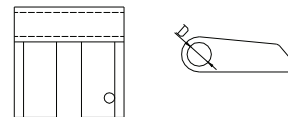
PART NO.	A	B	C	D	CHAIN
AS7500S	2-3/4"	5-7/8"	3-3/4"	2-1/4"	1/4"—5/16"
AS7501S	2-7/8"	5-7/8"	4"	2-1/4"	1/4"—3/8"

SS 316 Deluxe Chain Stopper

- Works with your anchor roller to take the tension off your windlass.
- Mounts alone or inside most anchor rollers.
- Fits 1/4" to 3/8" chain.
- Removable pawl flips up when not in use.
- Prevents damage to windlass.



THE WHOLE SET



THE PAWL

PART NO.	A	B	C	D
AS7502S	2-3/4"	3-1/8"	2-7/16"	1/2"

SS 316 Spring Hinged Deck Pipe — Oval

PART NO.	BASE SIZE	CUT OUT SIZE	PIPE HOLE
AS7510S	5-5/8"×4-1/16"	4-1/8"×2-3/4"	3-3/4"×2-7/16"

***SS 316 or Chrome-Plated Brass Deck Pipe — Oval***

PART NO.	MATERIAL	BASE SIZE	CUT OUT SIZE	PIPE HOLE
AS7511	Chrome-Plated	6-1/4"×4-1/2"	4-1/2"×2-1/2"	4-1/8"×2-1/8"
AS7511-C	Replacement cap with chain			
AS7511S	SS	6-5/16"×4-7/16"	4-3/8"×2-9/16"	4-3/8"×2-1/2"
AS7511S-C	Replacement cap with chain			

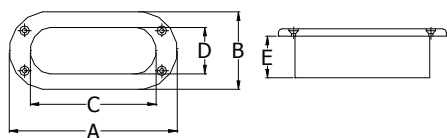
***SS 316 Spring Hinged Deck Pipe — Round***

PART NO.	BASE SIZE	CUT OUT SIZE	PIPE HOLE
AS7520S	3-1/8"	1-3/4"	1-1/2"

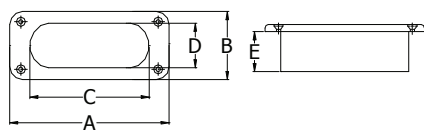
***Brass or Chrome-Plated Brass Deck Pipe — Round***

PART NO.	MATERIAL	BASE SIZE	CUT OUT SIZE
AS7521B	Brass	5-3/8"	3-3/4"
AS7521B-C	Replacement cap only		
AS7521BC	Chrome-Plated Brass	5-3/8"	3-3/4"
AS7521BC-C	Replacement cap only		

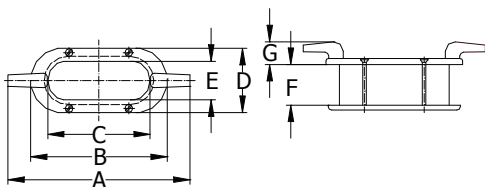


SS 316 Hawse Pipe — Oval

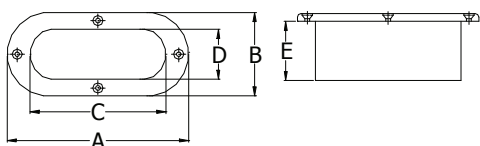
PART NO.	A	B	C	D	E
6200S	5-1/2"	2-1/2"	3-3/4"	1-1/2"	7/8"

SS 316 Hawse Pipe — Rectangle

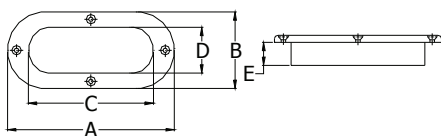
PART NO.	A	B	C	D	E
6202S	6"	3-1/4"	4"	2"	1-1/8"

SS 316 Hawse Pipe with Finish Ring and Cleat — Oval

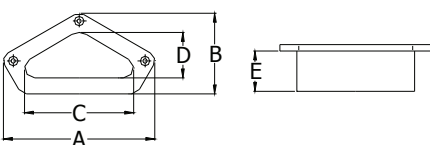
PART NO.	A	B	C	D	E	F	G
6210S	13"	8"	6"	5"	4"	3-1/2"	2"
6211S	13"	8"	6"	5"	4"	4-1/2"	2"

SS 316 Hawse Pipe — Oval

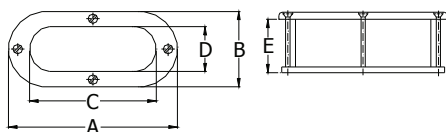
PART NO.	A	B	C	D	E
6204S	7"	4"	4-1/2"	1-1/2"	2-1/8"

SS 316 Hawse Pipe – Oval

PART NO.	A	B	C	D	E
6206S	9-3/8"	5-1/4"	7"	3"	1"

SS 316 Hawse Pipe – Triangular

PART NO.	A	B	C	D	E
6208S	8"	5"	5"	3"	2"

Bronze Hawse Pipe with Finish Ring – Oval

PART NO.	A	B	C	D	E
1200B	5-5/16"	2-3/4"	3-3/4"	1-1/2"	2"
1202B	7"	3-3/4"	4-1/2"	1-7/8"	3"

SS 316 Cast Mooring Bitt with Release Pin

PART NO.	BASE DIA.	HEIGHT	WIDTH
6700S	2-3/8"x 2-3/8"	3-1/2"	4-1/4"
6702S	3-1/2"x 3-1/2"	4-3/4"	5-1/4"

SS 304 Mooring Bitt

- ▼ Heliarc welded with mirror polish finish
- ▼ Pre-drilled SS backing plate

PART NO.	BASE DIA.	HEIGHT
7566S	8"x 4-1/2"	6-3/16"

SS 316 Small Mooring Bitt — Bolt Through

- ▼ Heliarc welded with mirror polish finish
- ▼ Pre-drilled SS backing plate

PART NO.	BASE SIZE	HEIGHT	POST DIA.
7565S	4-13/16"x3-13/16"	4-3/4"	2-1/2"

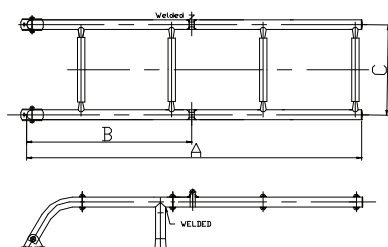
SS 316 Small Mooring Bitt — Bolt Through

- ▼ Heliarc welded with mirror polish finish

PART NO.	BASE SIZE	HEIGHT	POST DIA.
7567S	2-1/2"	4-5/16"	2-1/2"

SS 304 Telescoping Ladder w/ Handle and Short Curved Tab

PART NO.	LENGTH DEPLOYED	LENGTH STOWED	CENTER WIDTH	GUDGEON LENGTH	STEP NO.
B00301CHA	35"	14-1/2"	10"	7"	3
B00311CHA	23-1/2"	13-1/2"	10"	5-3/4"	2

SS 304 Transom Ladder—4 Step

▼ SS316 Cast Hinge connects 1" tube when deployed

PART NO.	A	B	C
B00361	33-1/2"	16-1/2"	9-1/4"
B00361-G	Replacement gudgeon only		

SS 304 Telescoping Ladder—4 Step

PART NO.	LENGTH DEPLOYED	LENGTH STOWED	CENTER WIDTH	GUDGEON LENGTH	CURVED TAB
B00351R	45-1/2"	15-1/2"	10"	6-1/2"	SHORT

SS 304 Telescoping Ladder w/Curved Tab—3 Step

PART NO.	LENGTH DEPLOYED	LENGTH STOWED	CENTER WIDTH	GUDGEON LENGTH	CURVED TAB
B00301R	35"	14-1/2"	10"	7"	SHORT
B00301R-5	35"	14-1/2"	10"	5-13/16"	SHORT

SS 304 Telescoping Ladder w/ Curved Tab—2 Step

PART NO.	LENGTH DEPLOYED	LENGTH STOWED	CENTER WIDTH	GUDGEON LENGTH	CURVED TAB
B00311R	23-1/2"	13-1/2"	10"	5-3/4"	SHORT

SS 304 Pocket Mount Telescoping Ladder w/ Slider

PART NO.	LENGTH DEPLOYED	LENGTH STOWED	CENTER WIDTH	GUDGEON LENGTH	STEP NO.
B00301-SLD	35"	14-1/2"	10"	5-13/16"	3
B00311-SLD	23-1/2"	13-1/2"	10"	5-7/8"	2

SS 304 Wider Telescoping Ladder with Short Curved Tab

PART NO.	LENGTH DEPLOYED	LENGTH STOWED	WIDTH	GUDGEON LENGTH	STEP NO.
B00351WH	45-11/16"	15-1/4"	17-1/8"	6-1/2"	4
B00301WH	32"	15"	17"	7"	3

SS 304 Under Platform Telescoping Ladder—2 Step

PART NO.	LENGTH DEPLOYED	LENGTH STOWED	CENTER WIDTH
B00331	23-1/2"	13-1/2"	10"
B00333	20-1/4"	12"	10"
B00331-G	Replacement Gudgeon only for both		

**SS 304 Under Platform Telescoping Ladder—3 Step**

PART NO.	LENGTH DEPLOYED	LENGTH STOW	CENTER WIDTH
B00330	35"	14-1/2"	10"
B00330-G	Replacement Gudgeon only.		

**SS 304 Transom Gudgeon**

PART NO.	LENGTH	INSIDE DIA.	CURVED TAB
7737S	4-1/2"	1-1/16"	×
7737SPE	4-1/2"	1-1/16"	LONG
7732SL	5-1/2"	1-3/8"	LONG
7731SR	5-3/4"	1-1/8"	SHORT
7732S	5-13/16"	1-3/8"	×
7732SR	5-13/16"	1-3/8"	SHORT
7735S	5-7/8"	1-1/8"	×
7735SL	5-7/8"	1-1/8"	LONG
7734S	6-1/2"	1-3/4"	×
7734SR	6-1/2"	1-3/4"	SHORT
7734SL	6-1/2"	1-3/4"	LONG
7736S	7"	1-1/16"	×
7736SR	7"	1-3/8"	SHORT



Deck Step

- Injection molded rubber pad and SS 304 Stamped frame.

PART NO.	LENGTH	WIDTH	FASTENER
50712SR	8-3/8"	2-1/4"	#8 FH
50712SR-R	Replaceable Pad for 50712SR		

**Deck Step**

- Injection molded rubber pad and SS 304 Stamped frame.

PART NO.	LENGTH	WIDTH	FASTENER
50718SR	8-13/16"	3-3/8"	#8 FH
50718SR-R	Replaceable Pad for 50718SR		

**Folding Step**

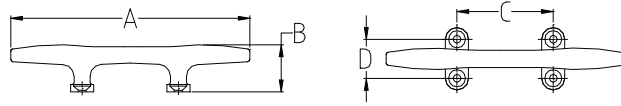
- SS 316 Cast or Chrome-Plated Brass

PART NO.	MOUNT BASE	STEP PAD	FASTENER
50724BC	4-5/16" x 1-13/16"	2" x 3-13/16"	5/16" RH
50724SS	4-5/16" x 1-13/16"	2" x 3-13/16"	5/16" RH

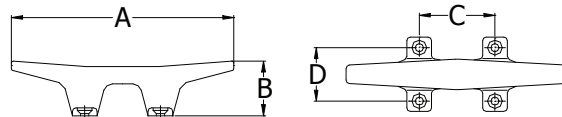
**Black Nylon Step Handle**

PART NO.	LENGTH	WIDTH	DEPTH
50726	6-3/8"	1-5/8"	2-1/2"

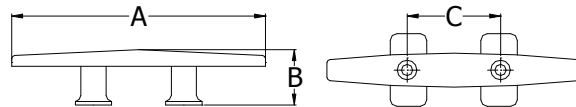


Chrome-Plated Zamak Hollow Base Cleat

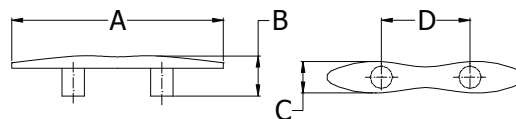
PART NO.	A	B	C	D
53040CZ	4"	1-1/4"	1-1/2"	1-1/16"

Chrome-Plated Zamak Hollow Base Cleat

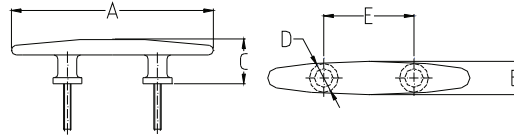
PART NO.	A	B	C	D
53050CZ	4-1/2"	1-1/8"	1-3/4"	1-3/16"
53051CZ	6"	1-3/8"	2-3/16"	1-9/16"

Chrome-Plated Zamak Humpback Cleat

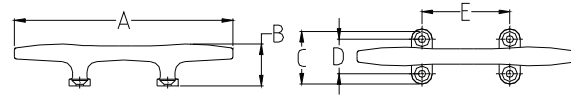
PART NO.	A	B	C
53061CZ	6"	1-3/8"	2"

SS 316 Stud Cleat

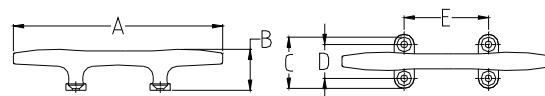
PART NO.	A	B	C	D	STUD
6024S	6"	1-1/4"	1"	2-7/16"	1/4-20 x 2"

SS 316 Heavy Duty Stud Cleat

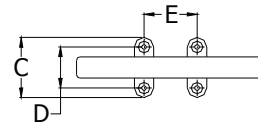
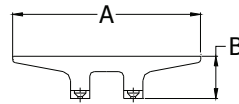
PART NO.	A	B	C	D	E	STUD
6025S	6"	1-1/16"	1-7/16"	13/16"	2-7/16"	3/8" x 2"
6026S	8"	2-15/16"	1-5/8"	1-3/32"	2-7/16"	5/16" x 1-7/8"
6026SPE	8"	2-15/16"	1-5/8"	1-3/32"	2-7/16"	Without stud
6027S	10"	1-5/8"	2-3/16"	1-1/4"	3-7/8"	1/2" x 2"-15/16"
6027SPE	10"	1-5/8"	2-3/16"	1-1/4"	3-7/8"	Without stud

SS 316 Herreshoff Cleat

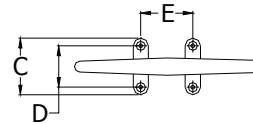
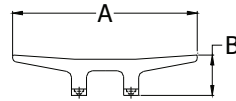
PART NO.	A	B	C	D	E
6028S	4-1/2"	1-1/16"	1-13/32"	7/8"	1-7/8"
6030S	6"	1-1/4"	1-7/8"	1-1/16"	2-1/4"
6032S	8"	1-1/2"	2-3/16"	1-3/8"	2-7/8"
6034S	10"	1-7/8"	2-11/16"	1-3/4"	3-11/16"
6036S	12"	2-3/16"	2-3/4"	1-5/16"	3-3/4"

SS 316 Heavy Duty Herreshoff Cleat

PART NO.	A	B	C	D	E
6037S	8"	2"	2-9/16"	1-3/4"	3-5/16"
6038S	10"	2-7/16"	2-7/8"	1-7/8"	3-3/4"
6039S	12"	2-3/4"	3-1/2"	2-1/2"	4-13/16"
6040S	15"	3-3/4"	3-7/8"	2-9/16"	4-27/32"

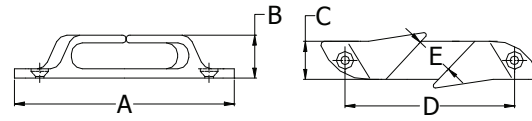
SS 316 Heavy Duty Mooring Cleat

PART NO.	A	B	C	D	E
6041S	11-1/2"	2-1/8"	4-3/8"	3"	3-3/8"
6042S	15"	2-3/4"	5-1/2"	3-7/8"	4-1/8"

SS 316 Mooring Cleat

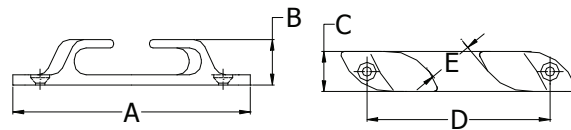
PART NO.	A	B	C	D	E
6044S	5-3/4"	1-1/4"	2-3/8"	1-5/8"	2"
6046S	8"	1-5/8"	2-3/8"	1-5/8"	2-1/4"
6048S	9-3/4"	1-3/4"	2-5/8"	1-3/4"	2-3/16"

SS 316 Skene Angled Bow Chocks



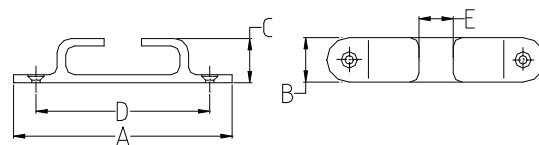
PART NO.	A	B	C	D	E	UNIT
6050S	4-1/2"	1-5/16"	3/4"	3-5/16"	1/2"	Pairs
6052SH	6"	1-15/16"	1-1/16"	4-5/8"	7/8"	Pairs
6054S	7-7/8"	1-7/8"	1"	6-3/8"	1-1/8"	Pairs

SS 316 Angled Bow Chocks



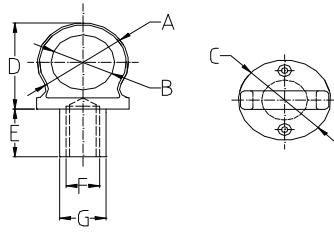
PART NO.	A	B	C	D	E	UNIT
6060S	4-1/2"	1"	3/4"	3-5/16"	1/2"	Pairs
6062S	6"	1-1/8"	1-1/16"	4-3/4"	1"	Pairs
6064S	9"	1-3/4"	1-5/8"	7-3/16"	1-1/4"	Pairs

SS 316 Bow Chocks



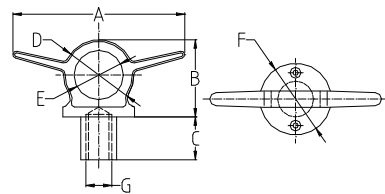
PART NO.	A	B	C	D	E	UNIT
6070S	5"	15/16"	1-1/8"	3-15/16"	1-1/8"	Pairs
6072SP	6"	1-1/16"	1-1/8"	4-3/4"	1-3/8"	Pairs
6074S	9"	1-5/8"	1-3/4"	7-3/16"	1-1/4"	Pairs

SS 316 Lift Ring



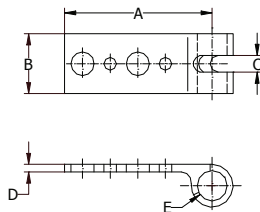
PART NO.	A	B	C	D	E	F	G
6231S	2-7/32"	1-1/2"	2-3/16"	2-3/8"	7/8"	5/8-11UNC	31/32"
6231S-L	2-7/32"	1-3/8"	2-1/4"	3-3/16"	15/16"	5/8-11UNC	31/32"

SS 316 Lift Ring w/ Cleat



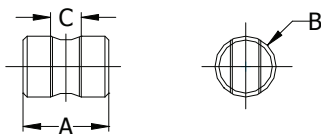
PART NO.	A	B	C	D	E	F	G
6322S	5-15/16"	1-7/8"	7/8"	1-31/32"	1-1/8"	2-3/32"	5/8-11UNC
6324S	7"	2-15/32"	31/32"	2-1/2"	1-1/2"	2-17/32"	5/8-11UNC

SS 304 Sling



PART NO.	A	B	C	D	E
6325S	4-7/16"	1-3/4"	23/32"	5/16"	1-1/4"

SS 304 Cross Bar for Sling



PART NO.	A	B	C
6325S-C	1-3/4"	1-1 4"	5/8-11UNC

SS 304 Bow Eye

PART NO.	STOCK DIAMETER	OVERALL LENGTH	THREAD LENGTH	BOW PLATE
7846S-B	3/8"	3"	1-1/2"	2
7848S-B	3/8"	3-3/4"	2-1/4"	2
7850S-B	3/8"	4-1/2"	3"	2
7852S-B	1/2"	5-1/4"	3-1/2"	2
7863S-B	1/2"	4-1/2"	2-3/4"	2
7854S-B	1/2"	5-7/8"	3-7/8"	2
7856S-B	1/2"	6-1/2"	4-3/8"	2
7858S-B	1/2"	7"	5-1/4"	2

**SS 304 Long Shank Bow Eye**

PART NO.	STOCK DIAMETER	OVERALL LENGTH	THREAD LENGTH	BOW PLATE
7859S-BL	3/8"	6"	3"	2
7866S-BL	1/2"	6-1/2"	3-1/2"	2

**SS 304 Stern Eye**

PART NO.	STOCK DIAMETER	OVERALL LENGTH	THREAD LENGTH	BOW PLATE	STERN PLATE
7848S-S	3/8"	3-3/4"	2-1/4"	1	1
7850S-S	3/8"	4-1/2"	3"	1	1
7852S-S	1/2"	5-1/4"	3-1/2"	1	1
7861S-S	1/2"	3-3/4"	2"	1	1
7867S-S	5/8"	8"	5-1/2"	1	1

**SS 304 Double Shank Bow Eye**

PART NO.	STOCK DIAMETER	OVERALL LENGTH	THREAD LENGTH	BOW PLATE
7848S-D	3/8"	3-3/4"	2-1/4"	2

**SS 304 Transom Mount Ski Tow**

PART NO.	STOCK DIA.	RING DIA.	THREAD LENGTH
7767S	3/8"	2-1/2"	1-1/2"
7767SPE	3/8"	2-1/2"	To Be Welded On Tubing
7768S	3/8"	2-1/2"	2"
7769S	3/8"	3"	2"
7772S	1/2"	3-1/2"	3-1/2"

**7767S****7767SPE**

SS 316 Cast Diamond Pad Eye

PART NO.	EYE I.D.	BASE
6330S	3/4" x 7/16"	3-1/8" x 2"
6332S	7/8" x 1/2"	3-1/2" x 2-3/16"
6334S	1" x 5/8"	4" x 2-3/8"



SS 304 Stamped Diamond Pad Eye

PART NO.	EYE I.D.	STOCK DIA.	BASE
02321S	7/16" x 1/2"	3/16"	2-5/16" x 1-7/16"
02322S	1" x 9/16"	1/4"	2-3/8" x 1-9/16"
02323S	7/8" x 11/16"	5/16"	3-1/8" x 2"



SS 316 Cast Oblong Pad Eye

PART NO.	EYE I.D.	BASE
6340S	5/8" x 1/2"	2-15/16" x 7/8"
6342S	3/4" x 5/8"	3-1/2" x 1-1/4"
6344S	7/8" x 3/4"	4" x 1-3/8"



SS 304 Stamped Oblong Pad Eye

PART NO.	EYE I.D.	STOCK DIA.	BASE
02341S	1/2" x 11/16"	3/16"	1-3/4" x 9/16"
02342S	9/16" x 15/16"	1/4"	2-3/8" x 13/16"
02343S	11/16" x 1-3/16"	5/16"	3-1/8" x 1"



SS 304 Stamped Folding Pad Eye

PART NO.	STOCK DIA.	HEIGHT	WIDTH	LENGTH
02926S	1/4"	1/8"	2"	2-5/16"
02927S	5/16"	1/8"	2"	2-5/16"



SS 304 Eye Strap

PART NO.	THICKNESS	HEIGHT	LENGTH
02950S	1/16"	1/2"	1-1/2"
02951S	3/32"	11/16"	1-7/8"
02952S	3/32"	7/8"	2-9/32"



SS 304 Eye Strap

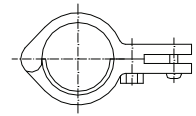
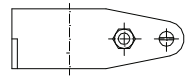
PART NO.	STOCK DIA.	HEIGHT	LENGTH
56105S	3/16"	11/16"	2"
56105SPE	3/16"	9/16"	2"
56106S	1/4"	1"	2-1/4"
56107S	5/16"	1"	2-1/2"



SS 316 Take-Apart Jaw Slide



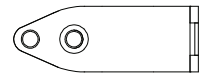
PART NO.	FOR RAIL	FOR RAIL W/PLATE	PLATE THICKNESS
6800S	1"	7/8"	1/16"
6802S	1-1/4"	1-1/8"	1/16"



SS 316 Hinge Jaw Slide



PART NO.	FOR RAIL	FOR RAIL W/PLATE	PLATE THICKNESS
6802SH	1-1/4"	1-1/8"	1/16"
6804SH	1-1/2"	1-3/8"	3/32"



SS 316 Heavy Duty Top Cap

PART NO.	DESCRIPTION	SET SCREW	TUBE O.D.
6810SEU	Top cap	Two	7/8"
6810HD	Top cap	One	7/8"
6811SEU	Top cap	Two	1"
6811HD	Top cap	One	1"



6810SEU



6810HD

SS 316 Heavy Duty Jaw Slide

PART NO.	DESCRIPTION	SET SCREW	TUBE O.D.
6815SEU	Jaw slide w/bolt	Two	7/8"
6815HD	Jaw slide w/bolt	One	7/8"
6816SEU	Jaw slide w/bolt	Two	1"
6816HD	Jaw slide w/bolt	One	1"



6816SEU



6815HD

SS 316 Top Cap

PART NO.	DESCRIPTION	SET SCREW	TUBE O.D.
6810S	Top cap	One	7/8"
6811S	Top cap	One	1"



SS 316 Jaw Slide

PART NO.	DESCRIPTION	SET SCREW	TUBE O.D.
6815S	Jaw slide w/bolt	One	7/8"
6816S	Jaw slide w/bolt	One	1"



Top Fittings

SS 316 Top Cap with Jaw Slide Unit

PART NO.	DESCRIPTION	TUBE O.D.
6813SEU	Top cap w/jaw slide	7/8"
6817SEU	Top cap w/jaw slide	1"



SS 316 Top Insert

PART NO.	DESCRIPTION	TUBE O.D.
6820S	Top insert	3/4"
6821S	Top insert	7/8"
6822S	Top insert	1"



Nylon Top Cap

PART NO.	DESCRIPTION	TUBE O.D.
58700B	Black top cap	3/4"
58700W	White top cap	3/4"
58701B	Black top cap	7/8"
58701W	White top cap	7/8"



Nylon Top Insert

PART NO.	DESCRIPTION	TUBE O.D.
58703B	Black top insert	3/4"
58703W	White top insert	3/4"
58704B	Black top insert	7/8"
58704W	White top insert	7/8"



Nylon Jaw Slide

PART NO.	DESCRIPTION	TUBE O.D.
58706B	Black jaw slide	3/4"
58706W	White jaw slide	3/4"
58707B	Black jaw slide	7/8"
58707W	White jaw slide	7/8"



SS 316 Round Rail Base



30 Degrees



45 Degrees



60 Degrees



90 Degrees

PART NO.	DEGREE	TUBE O.D.	BASE
6840S	30	7/8"	2-1/2"
6841S	45	7/8"	2-1/2"
6842S	60	7/8"	2-1/2"
6843S	90	7/8"	2-1/2"

PART NO.	DEGREE	TUBE O.D.	BASE
6845S	30	1"	2-3/4"
6846S	45	1"	2-3/4"
6847S	60	1"	2-3/4"
6848S	90	1"	2-3/4"

SS 316 Rectangular Rail Base



30 Degrees



45 Degrees



60 Degrees



90 Degrees

PART NO.	DEGREE	TUBE O.D.	BASE
6850S	30	7/8"	1-3/4 x 3"
6851S	45	7/8"	1-3/4 x 3"
6852S	60	7/8"	1-3/4 x 3"
6853S	90	7/8"	1-3/4 x 3"

PART NO.	DEGREE	TUBE O.D.	BASE
6855S	30	1"	1-7/8 x 3-1/2"
6856S	45	1"	1-7/8 x 3-1/2"
6857S	60	1"	1-7/8 x 3-1/2"
6858S	90	1"	1-7/8 x 3-1/2"

SS 316 Round Base for Welding

PART NO.	TUBE O.D.	BASE O.D.	ANGLE	FASTENER
6841STPED	7/8"	2-3/4"	45°	#10
6842STPED	7/8"	2-3/4"	60°	#10
6843STPED	7/8"	2-3/4"	90°	#10

PART NO.	TUBE O.D.	BASE O.D.	ANGLE	FASTENER
6846STPED	1"	3"	45°	1/4"
6847STPED	1"	3"	60°	1/4"
6848STPED	1"	3"	90°	1/4"

**SS 316 Rectangular Base for Welding**

PART NO.	TUBE O.D.	BASE O.D.	ANGLE	FASTENER
6851STPED	7/8"	1-3/4 x 3-1/8"	45°	#10
6852STPED	7/8"	1-3/4 x 3-1/8"	60°	#10
6853STPED	7/8"	1-3/4 x 3-1/8"	90°	#10

PART NO.	TUBE O.D.	BASE O.D.	ANGLE	FASTENER
6856STPED	1"	1-3/4 x 3-1/8"	45°	1/4"
6857STPED	1"	1-3/4 x 3-1/8"	60°	1/4"
6858STPED	1"	1-3/4 x 3-1/8"	90°	1/4"



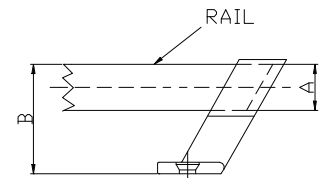
SS 316 Rail Stanchions

- Uses 1/4"-28 set screw for rail installation.
- Each base is pre-drilled with two countersunk holes for #10 screws.
- Port-side Stanchions (-P) have set screws on the left side of bushing.
- Starboard Stanchions (-S) have set screws on the right side of bushing.

PART NO.	DEGREE	Position	SET SCREWS	A	B
6862S	120	Forward	X	7/8"	1-13/16"
6862S-P	120	Forward	Left Hand	7/8"	1-13/16"
6862S-S	120	Forward	Right Hand	7/8"	1-13/16"
6867S	120	Forward	X	1"	2-3/16"
6867S-P	120	Forward	Left Hand	1"	2-3/16"
6867S-S	120	Forward	Right Hand	1"	2-3/16"



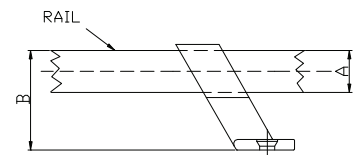
6862S



PART NO.	DEGREE	Position	SET SCREWS	A	B
6861S	60	Center	X	7/8"	1-13/16"
6861S-P	60	Center	Left Hand	7/8"	1-13/16"
6861S-S	60	Center	Right Hand	7/8"	1-13/16"
6866S	60	Center	X	1"	2-3/16"
6866S-P	60	Center	Left Hand	1"	2-3/16"
6861S	60	Center	Right Hand	1"	2-3/16"



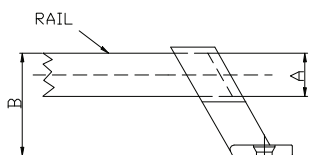
6861S-P



PART NO.	DEGREE	Position	SET SCREWS	A	B
6860S	60	AFT	X	7/8"	1-13/16"
6860S-P	60	AFT	Left Hand	7/8"	1-13/16"
6860S-S	60	AFT	Right Hand	7/8"	1-13/16"
6865S	60	AFT	X	1"	2-3/16"
6865S-P	60	AFT	Left Hand	1"	2-3/16"
6865S-S	60	AFT	Right Hand	1"	2-3/16"

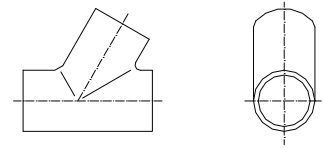


6860S-P

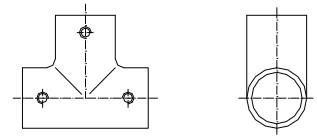


SS 316 Handrail Tee 60°

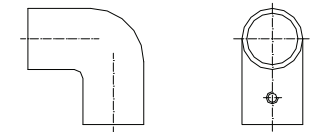
PART NO.	DEGREE	TUBE O.D.
6870S	60°	7/8"
6871S	60°	1"

**SS 316 Handrail Tee 90°**

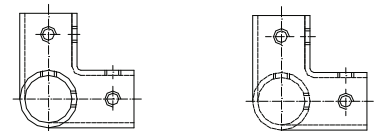
PART NO.	DEGREE	TUBE O.D.
6872S	90°	7/8"
6873S	90°	1"

**SS 316 2-Way Handrail Elbow**

PART NO.	DEGREE	TUBE O.D.
6876S	90°	7/8"
6877S	90 °	1"

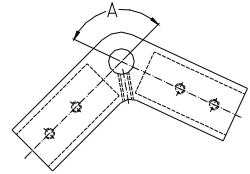
**SS 316 3-Way Handrail Elbow**

PART NO.	DEGREE	TUBE O.D.
6878S	90°	7/8"
6879S	90°	1"



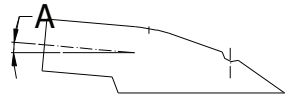
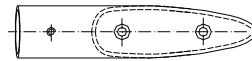
SS 316 Handrail Bow Form

PART NO.	A (DEGREE)	TUBE O.D.
6884S	110°	7/8"
6886S	125°	7/8"



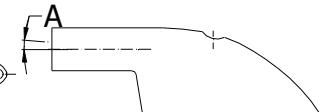
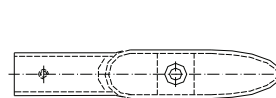
SS 316 Handrail End

PART NO.	A (DEGREE)	TUBE O.D.
6890S	5-1/2°	7/8"



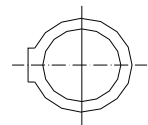
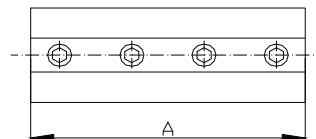
SS 316 Handrail End

PART NO.	A (DEGREE)	TUBE O.D.
6891S	90°	7/8"



SS 316 Heavy Duty Tube Connector

PART NO.	A	TUBE O.D.
6895S	3"	7/8"
6896S	3"	1"

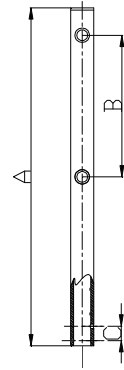


SS 304 Cylindrical Tip Stanchion



- ▼ SS Tube 1" O.D.
- ▼ With double lifeline holes.

PART NO.	A	B	C
6015S	23-1/2"	11-3/32"	1"

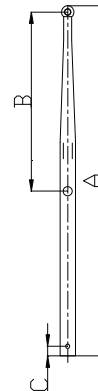


SS 304 Tapered Tip Stanchion



- ▼ SS Tube 1" O.D.
- ▼ With double lifeline holes.

PART NO.	A	B	C
6016S	24"	12-11/32"	21/32"

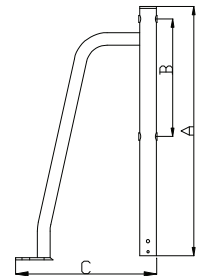


SS 304 Gate Stanchion



- ▼ SS straight tube 1" O.D.
- ▼ With double lifeline holes.

PART NO.	A	B	C	RAIL SIDE
6017SR	24"	11-3/32"	13-1/2"	Right
6017SL	24"	11-3/32"	13-1/2"	Left

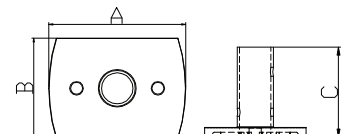


SS 316 Cast Stanchion Base



- ▼ SS Base for 6015S, 6017SR, 6017SL.

PART NO.	A	B	C
6018S	3-11/32"	2-1/2"	2-1/4"

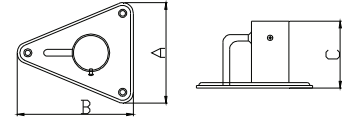


SS 304 Stamped Stanchion Base



- ▼ SS Base for all the stanchions with 1" O.D. tube.
- ▼ Triangular Deck Plate.

PART NO.	A	B	C
6019S	3"	3-1/2"	2"

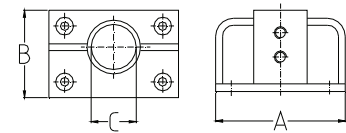


SS 316 Cast Stanchion Base



- ▼ SS base for all the stanchions with 1" O.D. tube.
- ▼ Square deck plate, double baled.

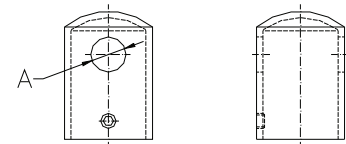
PART NO.	A	B	C
6020S	3-7/16"	3"	1"



SS 316 Heavy Duty Stanchion Cap



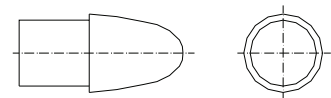
PART NO.	A	TUBE O.D.
6897S	5/16"	1"



SS 316 Bullet End

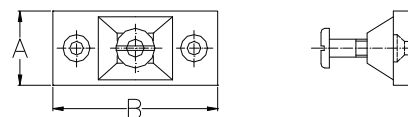


PART NO.	Overall length	TUBE O.D.
6899S	1/2"	7/8"

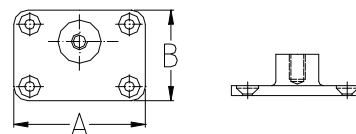


SS 316 Side Mount Deck Hinge

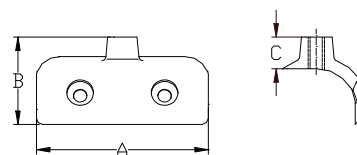
PART NO.	A	B	PIN SIZE
6824S	1"	2-1/16"	1/4"

**SS 316 Heavy Duty Side Mount Deck Hinge**

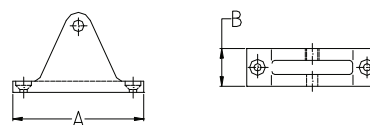
PART NO.	A	B	PIN SIZE
6825S	2-13/16"	1-7/8"	1/4"

**SS 316 Side Windshield Mount**

PART NO.	A	B	C	PIN SIZE
6826S	2-5/16"	1-1/8"	1/2"	1/4"

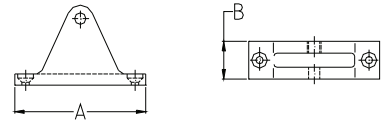
**SS 316 Deck Hinge 90°**

PART NO.	A	B	PIN SIZE
6828S	2-1/4"	3/4"	1/4"

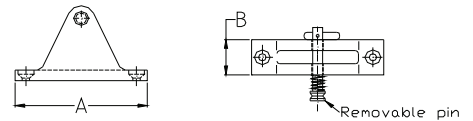


SS 316 Heavy Duty Deck Hinge 90°

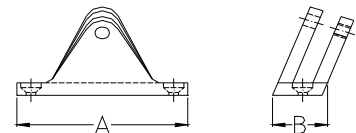
PART NO.	A	B	PIN SIZE
6829S	2-1/8"	1"	5/16"

**SS 316 Deck Hinge with Removable Pin 90°**

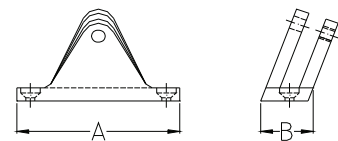
PART NO.	A	B	PIN SIZE
6830S	2-1/4"	3/4"	1/4"
6830S-PIN	Removable pin only		
6831S	Deck hinge w/o removable pin		

**SS 316 Angle Base Deck Hinge 80°**

PART NO.	A	B	PIN SIZE
6832S	2-1/4"	3/4"	1/4"

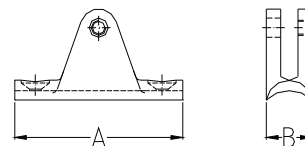
**SS 316 Angle Base Deck Hinge 80° with Removable Pin**

PART NO.	A	B	PIN SIZE
6834S	2-1/4"	3/4"	1/4"

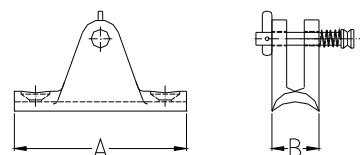


SS 316 Concave Base Deck Hinge

PART NO.	A	B	PIN SIZE
6836S	2-1/4"	3/4"	1/4"

**SS 316 Concave Base Deck Hinge with Removable Pin**

PART NO.	A	B	PIN SIZE
6836SRP	2-1/4"	1"	1/4"

**SS 316 Adjustable Deck Hinge with Rubber Block**

PART NO.	A	B	PIN SIZE
6839S	2-3/4"	1"	1/4"

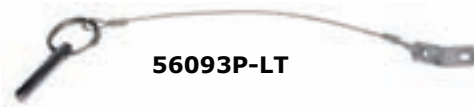
**Nylon Deck Hinge**

PART NO.	DESCRIPTION	BASE SIZE
58710B	Black side mount deck hinge	7/8 x 2-1/2"
58710W	White side mount deck hinge	7/8 x 2-1/2"
58720B	Black deck hinge	7/8 x 2-1/2"
58720W	White deck hinge	7/8 x 2-1/2"



Toggle Pin with Lanyard**56090T****56090T-LT****56090T-LE**

PART NO.	DESCRIPTION	PIN DIA.	PIN GRIP
56090T	Toggle pin only	1/4"	3/4"
56090T-LT	Pin with 6" lanyard TAB	1/4"	3/4"
56090T-LE	Pin with 6" lanyard EYE	1/4"	3/4"

Quick Release Pin with Lanyard**56093P****56093P-LT****56093P-LE**

PART NO.	DESCRIPTION	PIN DIA.	PIN GRIP
56093P	Quick release pin only	1/4"	3/4"
56093P-LT	Pin with 6" lanyard TAB	1/4"	3/4"
56093P-LE	Pin with 6" lanyard	1/4"	3/4"
56094P	Quick release pin only	1/4"	7/8"
56094P-LT	Pin with 6" lanyard TAB	1/4"	7/8"
56094P-LE	Pin with 6" lanyard	1/4"	7/8"
56095P	Quick release pin only	1/4"	1"
56095P-LT	Pin with 6" lanyard TAB	1/4"	1"
56095P-LE	Pin with 6" lanyard	1/4"	1"

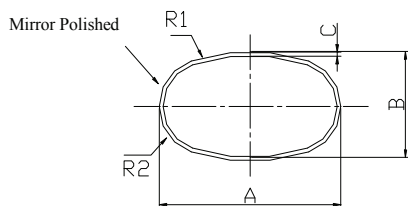
Lanyard with Eye and Tab**56097E****56097**

PART NO.	DESCRIPTION
56097T	6" nylon coated lanyard w/TAB
56097E	6" nylon coated lanyard

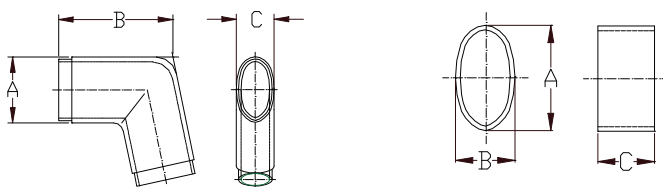
Blue Knob Set Screw

PART NO.	DESCRIPTION	SIZE
56098R	Round knob	1/4" - 20
56098W	Wing nut knob	1/4" - 20

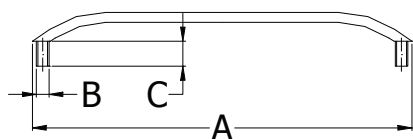
**56098R****56098W**

SS 316 Oval Handrail Tube

PART NO.	A	B	C	LENGTH
S12-200	2-3/8"	1-7/16"	1/16"	19'

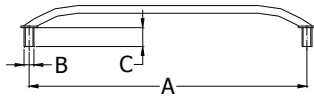
SS 304 Oval Shape Tube Connector

PART NO.	A	B	C
S12-202	2-3/8"	4-5/16"	1-1/2"
S12-204	2-9/32"	1-9/32"	1"

SS 304 Oval Handrail

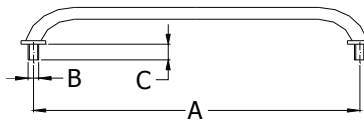
PART NO.	A	B	C	DEGREE
7870S	12"	5/16"-18 x 2"	1-7/8"	35°
7872S	17-1/4"	5/16"-18 x 2"	1-7/8"	35°
7873S	18"	5/16"-18 x 2"	1-7/8"	35°
7875S	24"	5/16"-18 x 2"	1-7/8"	35°
7878S	36"	5/16"-18 x 2"	1-7/8"	35°

SS 304 7/8" Round Handrail with Flange and Stud

**7882S**

PART NO.	A	B	C	DEGREE
7881S	7"	5/16"-18 x 1-5/8"	1-1/2"	60°
7881S-L	7-3/16"	5/16"-18 x 1-5/8"	1-1/2"	60°
7882S	8"	5/16"-18 x 1-1/2"	1-3/8"	45°
7882S-L	8-1/4"	5/16"-18 x 2"	1-7/8"	45°
7884S	11"	5/16"-18 x 1-1/2"	1-3/8"	45°
7886S	13"	5/16"-18 x 1-1/2"	1-3/8"	45°
7888S	17"	5/16"-18 x 1-1/2"	1-3/8"	45°
7889S	24"	5/16"-18 x 1-1/2"	1-3/8"	45°
7890S	28"	5/16"-18 x 1-1/2"	1-3/8"	45°

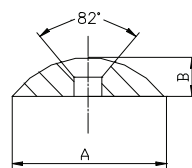
SS 304 1" Round Handrail with Flange and Stud



PART NO.	A	B	C
7892S	14"	3/8" -16	1-3/8"
7892SPE	Same As 7892S with threaded flange / no stud		
7895S	24"	3/8" -16	1-3/8"
7895SPE	Same As 7895S with threaded flange / no stud		
7899S	34"	3/8" -16	1-3/8"
7899SPE	Same As 7899S with threaded flange / no stud		

SS 316L Solid Black Half Oval Rub Rail

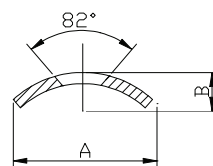
- ▼ Mirror polished
- ▼ Drilled and countersunk on 6" center.



PART NO.	A	B	COUNTERSUNK	LENGTH
S316L-461	3/4"	3/16"	10#	20'
S316L-465	1"	1/4"	12#	20'
S316L-467	1-1/4"	5/16"	12#	20'
S316L-469	1-1/2"	3/8"	12#	20'

SS 304 Hollow Back Rub Rail

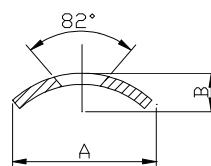
- ▼ Mirror polished
- ▼ Drilled and countersunk on 6" center.
- ▼ Also available by special order: Cut length 16' and 20'



PART NO.	A	B	THICKNESS	COUNTERSUNK	LENGTH
S304-471	3/4"	1/4"	1.5mm	8#	12'
S304-475	1"	1/4"	1.5mm	10#	12'
S304-477	1-1/4"	5/16"	1.5mm	10#	12'
S304-479	1-1/2"	3/8"	1.5mm	10#	12'
S304-451	3/4"	1/4"	2.0mm	8#	12'
S304-455	1"	1/4"	2.0mm	10#	12'
S304-457	1-1/4"	5/16"	2.0mm	10#	12'
S304-459	1-1/2"	3/8"	2.0mm	10#	12'

SS 316 Hollow Back Rub Rail

- ▼ Mirror polished
- ▼ Drilled and countersunk on 6" center.
- ▼ Also available by special order: Cut length 16' and 20'



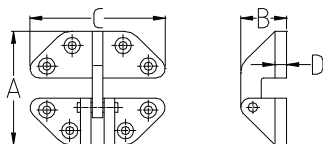
PART NO.	A	B	THICKNESS	COUNTERSUNK	LENGTH
S316-471	3/4"	1/4"	1.5mm	8#	12'
S316-475	1"	1/4"	1.5mm	10#	12'
S316-477	1-1/4"	5/16"	1.5mm	10#	12'
S316-479	1-1/2"	3/8"	1.5mm	10#	12'
S316-451	3/4"	1/4"	2.0mm	8#	12'
S316-455	1"	1/4"	2.0mm	10#	12'
S316-457	1-1/4"	5/16"	2.0mm	10#	12'
S316-459	1-1/2"	3/8"	2.0mm	10#	12'

SS 316 Rub Strakes

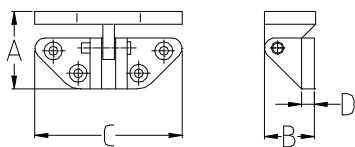
- ▼ Mirror Polished.
- ▼ Prevent chafing of dock, fender, and anchor lines with Stainless Steel Rub Strakes .

PART NO.	WIDTH	LENGTH
50720SS	3/4"	8"
50721SS	3/4"	12"
50722SS	3/4"	18"
50723SS	3/4"	24"

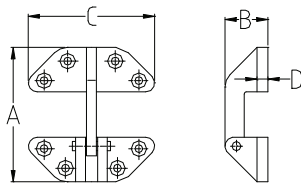


SS 316 or Bronze Hatch Hinge

PART NO.	MATERIAL	A	B	C	D	FASTENER
6080S	SS 316	2-5/8"	1-5/32"	2-7/8"	1/4"	#10
1740B	Bronze	2-1/2"	1-5/32"	2-3/4"	1/4"	#8

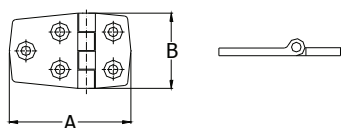
SS 316 Angle Base Hatch Hinge

PART NO.	A	B	C	D	FASTENER
6082S	1-5/8"	1-5/32"	2-7/8"	1/4"	#10

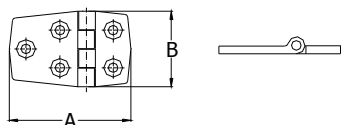
SS 316 Hatch Hinge—Long Reach

PART NO.	A	B	C	D	FASTENER
6084S	3-5/8"	1-5/32"	2-7/8"	1/4"	#10
6084SPE	3-5/8"	1-5/32"	2-7/8"	1/4"	#10

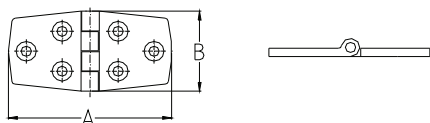
The groove of **6084SPE** is 3/32" wider than **6084S** to accommodate for powder coating thickness.

SS 316 Short Side Door Hinge

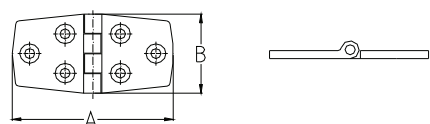
PART NO.	A	B	THICKNESS	FASTENER
6104S	2-3/8"	1-1/2"	3/16"	#10
6106S	2-7/8"	1-1/2"	3/16"	#10

SS 304 Short Side Door Hinge

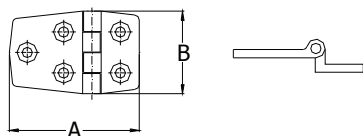
PART NO.	A	B	THICKNESS	FASTENER
7722ES	2-1/4"	1-7/16"	1/16"	#8

SS 316 Door Hinge

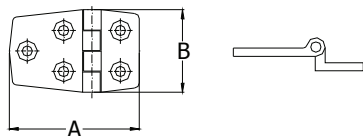
PART NO.	A	B	THICKNESS	FASTENER
6108S	3"	1-1/2"	3/16"	#10
6110S	4-1/8"	1-1/2"	3/16"	#10

SS 304 Door Hinge

PART NO.	A	B	THICKNESS	FASTENER
7719ES	3"	1-7/16"	1/16"	#8

SS 316 Offset Hinge

PART NO.	A	B	OFFSET	THICKNESS	FASTENER
6100S	2-1/8"	1-1/2"	3/8 "	3/16"	#10

SS 304 Offset Hinge

PART NO.	A	B	OFFSET	THICKNESS	FASTENER
7723ES	2-5/8"	1-7/16"	3/4"	1/16"	#8
7724ES	2-5/8"	1-7/16"	5/8"	1/16"	#8
7725ES	2-5/8"	1-7/16"	1/2"	1/16"	#8

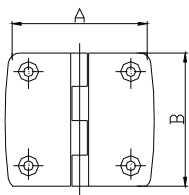
SS 316 T-Hinge

PART NO.	LENGTH	WIDTH	THICKNESS	FASTENER
6126S	7-3/4"	3-7/8"	7/32"	#10

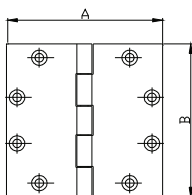
**SS 304 Locker Hinge**

PART NO.	LENGTH	WIDTH	THICKNESS	FASTENER
7731ES	6"	3"	1/16"	#8



SS 316 Butt Hinge

PART NO.	A	B	THICKNESS	FASTENER
6114S	1-1/2"	1-1/2"	3/16"	#10
6116S	2"	2"	3/16"	#10

SS 316 Butt Hinge**6117S****6117SR**

PART NO.	A	B	THICKNESS	FASTENER
6117S	4"	4"	5/32"	#12
6117SR	6117S reverse, opening 90 degree			
6118S	5"	5"	5/32"	#12
6118SR	6118S reverse, opening 90 degree			

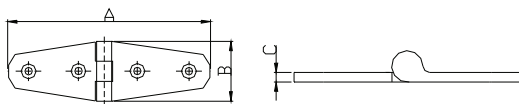
Chrome-Plated Brass Plated Butt Hinge

PART NO.	LENGTH	WIDTH	THICKNESS	FASTENER
6114BC	1-5/8"	1-5/8"	5/32"	#6
6116BC	2"	2"	5/32"	#8

**SS 304 Butt Hinge**

PART NO.	LENGTH	WIDTH	THICKNESS	FASTENER
7720ES	1-7/16"	1-7/16"	1/16"	#8
7730ES	2"	2"	1/16"	#8



SS 316 Strap Hinge

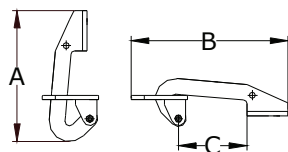
PART NO.	A	B	C	FASTENER
6120S	4-1/16"	1-1/16"	3/16"	#10 (4)
6121S	5-1/4"	1-1/16"	3/16"	#10 (5)
6122S	6-1/4"	1-1/16"	3/16"	#10 (6)

SS 304 Strap Hinge

PART NO.	LENGTH	WIDTH	THICKNESS	FASTENER
7728ES	5-5/8"	1-1/2"	1/16"	#8
7729ES	4"	1-3/32"	1/16"	#8

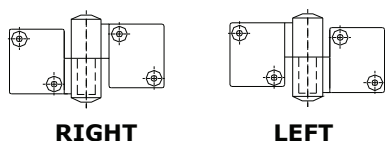
**SS 304 Heavy Duty Strap Hinge**

PART NO.	LENGTH	WIDTH	THICKNESS	FASTENER
7727ES	7-1/8"	1-5/8"	1/16"	#8

**Hidden Style Engine Lid Hinge**

PART NO.	A	B	C	THICKNESS	FASTENER
6086S	7-3/8"	8-5/8"	3-7/8"	1/4"	#10

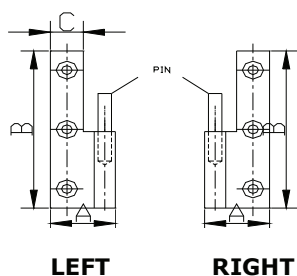
SS 316 or Bronze Take Apart Hinge



PART NO.	LENGTH	WIDTH	MATERIAL	THICKNESS	FASTENER	DOOR
6112SR	3-9/16"	2"	SS	7/32"	#10	Right
6112SL	3-9/16"	2"	SS	7/32"	#10	Left
2036B-R	3-1/8"	3-1/8"	Brass	1/8"	#10	Right
2036B-L	3-1/8"	3-1/8"	Brass	1/8"	#10	Left

SS 316 Cast Take Apart Hinge

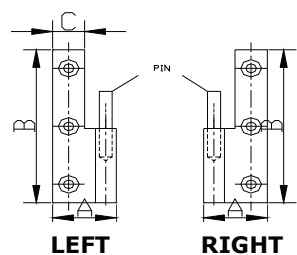
▼ Uses Teflon washers.



PART NO.	A	B	C	THICKNESS	FASTENER	DOOR
2030HS-R	1"	1-1/2"	1/2"	3/32"	#8	Right
2030HS-L	1"	1-1/2"	1/2"	3/32"	#8	Left
2034HS-R	1"	2-3/4"	1/2"	3/32"	#8	Right
2034HS-L	1"	2-3/4"	1/2"	3/32"	#8	Left

Brass Take Apart Hinge

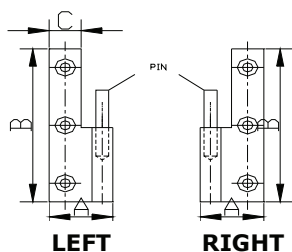
▼ Uses Teflon washers.



PART NO.	A	B	C	THICKNESS	FASTENER	DOOR
2030HB-R	1"	1-1/2"	1/2"	1/8"	#5	Right
2030HB-L	1"	1-1/2"	1/2"	1/8"	#5	Left
2032HB-R	1"	2"	1/2"	1/8"	#6	Right
2032HB-L	1"	2"	1/2"	1/8"	#6	Left
2034HB-R	1"	2-1/8"	1/2"	1/8"	#8	Right
2034HB-L	1"	2-1/8"	1/2"	1/8"	#8	Left

Brass Take Apart Knuckle Hinge

▼ Uses brass ring washers



PART NO.	A	B	C	THICKNESS	FASTENER	DOOR
2030KB-R	1-3/8"	2-13/16"	9/16"	1/8"	#5	Right
2030KB-L	1-3/8"	2-13/16"	9/16"	1/8"	#5	Left
2032KB-R	1"	2"	7/8"	1/8"	#6	Right
2032KB-L	1"	2"	7/8"	1/8"	#6	Left
2034KB-R	1"	1-5/8"	3/8"	1/8"	#6	Right
2034KB-L	1"	1-5/8"	3/8"	1/8"	#6	Left

SS 304 Bi-Fold Door Hinge

PART NO.	LENGTH	WIDTH	THICKNESS	FASTENER
07435ES	3-7/16"	2"	1/16"	#6

**SS 304 Flush Mount Double Pin Hinge**

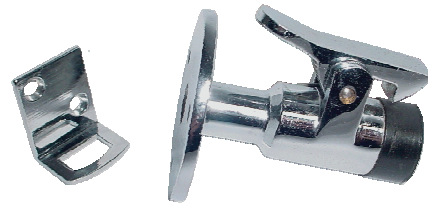
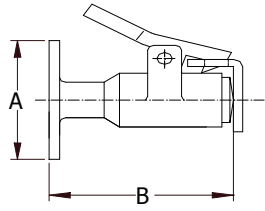
PART NO.	LENGTH	WIDTH	THICKNESS	FASTENER
7713ES	2-3/4"	1-5/8"	1/16"	#8

**SS 304 Heavy Duty Flush Mount Strap Hinge**

PART NO.	LENGTH	WIDTH	THICKNESS	FASTENER
7721ES	5-5/8"	1-1/2"	1/16"	#8
7726ES	7-1/8"	1-5/8"	1/16"	#8
7732ES	7"	1-1/2"	1/16"	#8

**7721ES****7726ES/7732ES**

Cushioned Door Holder



PART NO.	MATERIAL	A	B
2400SS	SS 316	2"	2-1/2"
2400BC	Chrome-Plated Brass	2"	2-1/2"
2400B	Brass	2"	2-1/2"

Door Holder

- SS 316 cast holder with SS 304 spring clamp



2410SS



2412SS

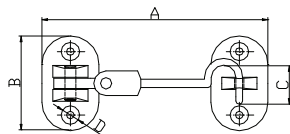


2414SS



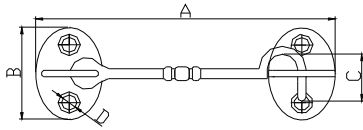
PART NO.	BASE DIMENSION	LENGTH FROM WALL TO DOOR
2410SS	3/4" x 1-1/8"	1-1/2"
2412SS	7/8" x 1-5/8"	1-5/8"
2414SS	7/8" x 1-5/8"	2-3/4"

SS 316 Double Jointed Cabin Door Hook



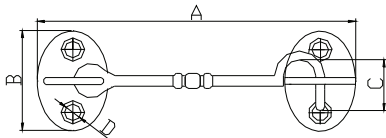
PART NO.	MATERIAL	A	B	C	D
2600S	SS 316	4"	1-5/8"	1"	#8
2076B	Brass	4"	1-5/8"	1"	#8

Brass Door Hook



PART NO.	A	B	C	D
2080B	4"	1-3/16"	7/8"	#6
2082B	3-1/2"	1-1/8"	3/4"	#6
2084B	3"	1-1/8"	3/4"	#6
2086B	2-3/4"	1-1/8"	3/4"	#6
2088B	2-1/4"	1-1/8"	3/4"	#6
2089B	Eye Only			

Chrome-Plated Brass Door Hook



PART NO.	A	B	C	D
8126BC	3-1/2"	1-1/8"	3/4"	#6
8120BC	3"	1-1/8"	3/4"	#6
8122BC	2-3/4"	1-1/8"	3/4"	#6
8124BC	2-1/4"	1-1/8"	3/4"	#6
8188BC	4"	1-1/8"	3/4"	#6
8128BC	Eye Only			

Chrome-Plated Brass Door Stop

PART NO.	OVERALL DIA.	HEIGHT
4020BC	1-7/8"	3/4"



Door Button

PART NO.	MATERIAL	DIA.
2070S	SS 316	1-5/8"
2070B	Bronze	1-5/8"
8110BC	Chrome-Plated Brass	1-5/8"



Barrel Bolt

PART NO.	MATERIAL	BASE SIZE	BOLT LENGTH
2074B	Brass	3" x 1-1/4"	2-1/2"
8099BC	Chrome-Plated Brass	3" x 1-1/4"	2-1/2"
6597S	SS 316	3" x 1-1/4"	2-1/2"



SS 316 Cast Heavy Duty Barrel Bolt

PART NO.	LENGTH	WIDTH	BOLT LENGTH
6598S	3-5/8"	1-1/2"	3"
6599S	4-1/4"	1-1/2"	4"



Cabinet Catch

- Corrosion-free SS Ball Spring

PART NO.	MATERIAL	OVERALL
2098B	Brass	1-3/4" x 5/16"
2098BC	Chrome-Plated Brass	1-3/4" x 5/16"
2099B	Brass	2" x 3/8"
2099BC	Chrome-Plated Brass	2" x 3/8"
2099S	SS	2" x 3/8"
2100B	Brass	2-1/4" x 7/16"
2100BC	Chrome-Plated Brass	2-1/4" x 7/16"



Elbow Catch

PART NO.	MATERIAL	BASE SIZE
2072B	Brass	5/8" x 1"
2072S	SS 316	5/8" x 1-3/32"



SS 304 Drawer Knob

PART NO.	KNOB DIA.	DEEP	SCREW LENGTH
7100-01-DK	7/8"	5/8"	1"



Brass Drawer Knob

PART NO.	KNOB DIA.	DEEP	SCREW LENGTH
4022B	1"	13/16"	1-1/16"



Brass Single Wardrobe Hook

PART NO.	DISTANCE FROM BASE	SCREW
2846B	1-1/2"	#6
2847B	2"	#6



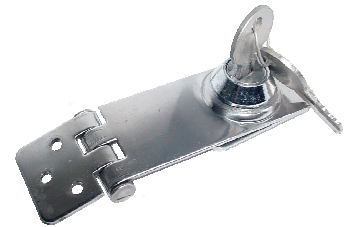
Brass Double Wardrobe Hook

PART NO.	DISTANCE FROM BASE	SCREW
2849B	1"	#6



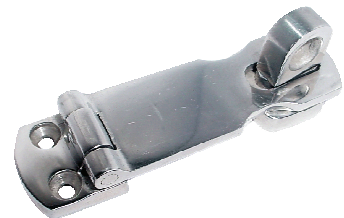
SS 304 Lockable Hasp

PART NO.	CLOSED LENGTH	WIDTH	MOUNT
7752S	3-1/8"	1-1/4"	Flush



SS 316 Swivel Hasp

PART NO.	CLOSED LENGTH	WIDTH	MOUNT
6500S	3"	1"	Flush
6502S	3"	1"	Angle
6503S	Eye only		



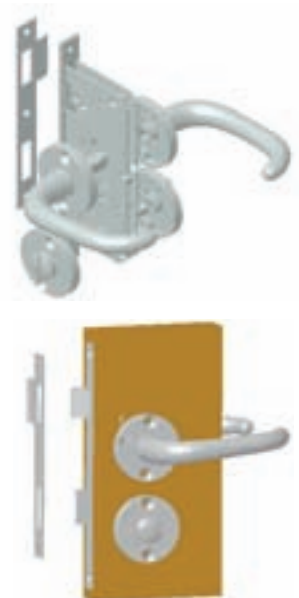
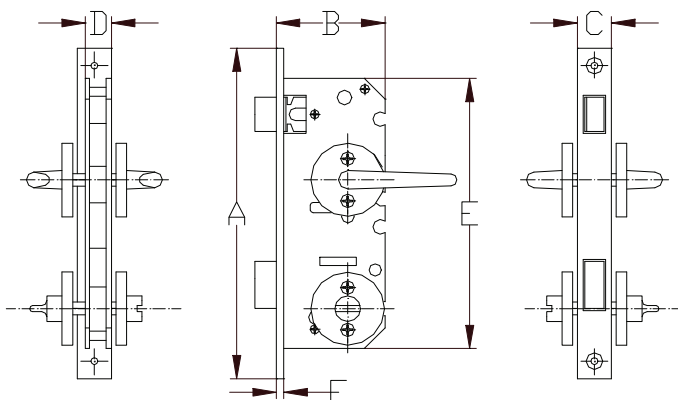
SS 304 Swivel Hasp—Stamped

PART NO.	CLOSED LENGTH	WIDTH
7750S	2-3/4"	1"
7751S	3-3/4"	1"



SS 316 Door Lock Set with Turn Button

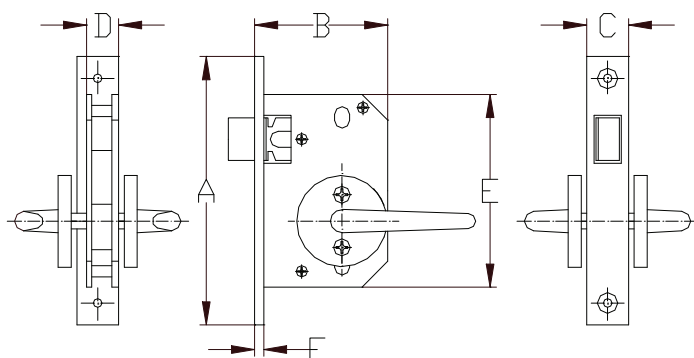
- ▼ All 316 Stainless steel casting for doors ranging 1" to 1-3/8" thickness.
- ▼ Door locks by turning the button from inside.



PART NO.	A	B	C	D	E	F
S12-400	7-5/32"	2-3/8"	11/16"	15/32"	5-7/16"	1/8"

SS 316 Door Lock Set

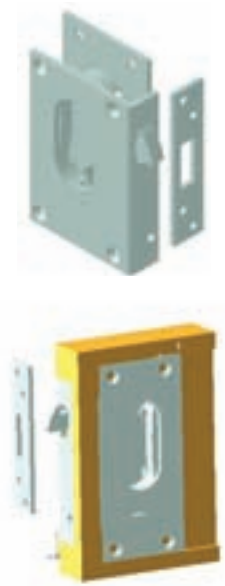
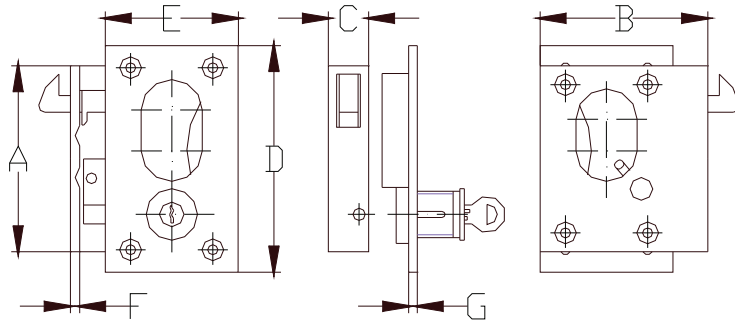
- ▼ All 316 Stainless steel casting for doors ranging 1" to 1-3/8" thickness.



PART NO.	A	B	C	D	E	F
S12-402	5-5/32"	2-3/8"	11/16"	15/32"	3-9/16"	1/8"

SS 316 Sliding Door Lock Set with Key

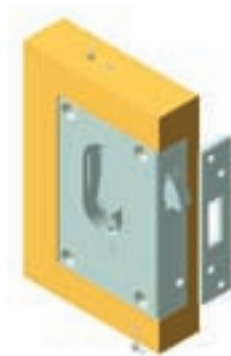
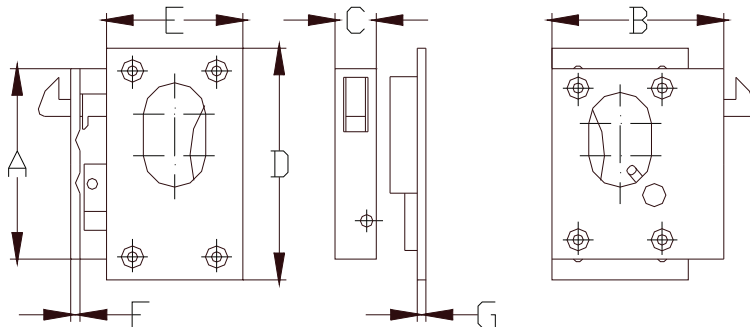
- ▼ All 316 Stainless steel casting for doors ranging 1" to 1-3/8" thickness.
- ▼ Can be locked from the outside with the key.



PART NO.	A	B	C	D	E	F	G
S12-410	4-3/16"	2-7/8"	3/4"	5-1/8"	2 7/16"	5/32"	1/8"

SS 316 Sliding Door Set without Key

- ▼ All 316 Stainless steel casting for doors ranging 1" to 1-3/8" thickness.
- ▼ Can only be locked from the inside.



PART NO.	A	B	C	D	E	F	G
S12-412	4-3/16"	2-7/8"	3/4"	5-1/8"	2-7/16"	5/32"	1/8"



Push Button Cabinet Latch

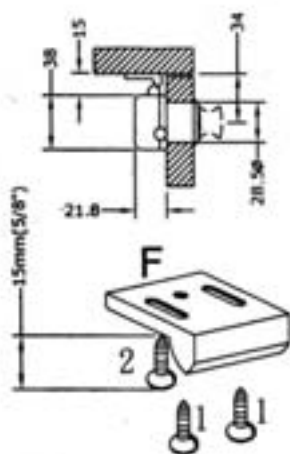
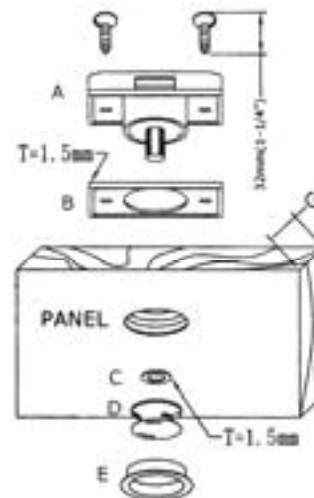


DESCRIPTION:

- ▼ Knob and rim are made of stainless steel to avoid corrosion.
- ▼ Two color options: Silver (chrome-plated stainless steel)
Gold (stainless steel with titanium plating)
- ▼ Standard thickness is 3/4". Compatible with thickness 1/2" to 1"
- ▼ Can prevent sliding of cabinets in both the lock and unlocked position.
- ▼ The cabinet will be fully locked when the button is pressed in.
- ▼ Patent pending design.

INSTALLATION:

1. Install cabinet latch (A & B) on the panel.
2. Take C & D out & keep them with E.
3. Once the painting of panel is finished, install C, D & E to avoid scratches.



4. Bolt #1 to panel F and adjust F to a suitable location.
5. Then bolt #2 to secure F in position.

Necessary parts:

If panel thickness (G) is 1/2", use 4 pcs of B.

If panel thickness (G) is 5/8", use 2 pcs of B.

If panel thickness (G) is 3/4", don't need to use B & C.

If panel thickness (G) is 7/8", use 2 pcs of C.

If panel thickness (G) is 1", use 4 pcs of C.

PART NO.	DESCRIPTION
7100S	Standard complete set silver for 3/4" (A. DS. ES. F)
7100G	Standard complete set gold for 3/4" (A. DG. EG. F)
7100-A	Cabinet Latch Lock Body (A)
7100-DS	SS Latch Knob (Silver Color) (D)
7100-DG	SS Latch Knob (Gold Color) (D)
7100-E	SS Trim Ring (Silver Color) (E)
7100-EG	SS Trim Ring (Gold Color) (E)
7100-C	Plastic Ring (C)
7100-B	Plastic Plate (B)
7100-F	Plastic Strike Plate (F)

SS 304 Swim Platform Mounting Bracket

PART NO.	LENGTH	HEIGHT	WIDTH	TUBE	DEGREE
7990S	6"	12"	1-1/2"	7/8"	12
7991S	6"	12"	1-1/2"	7/8"	16
7992S	9"	17"	1-1/2"	7/8"	12



SS 304 Table Brackets

- Each set includes two wall brackets and two table brackets

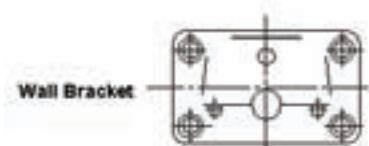


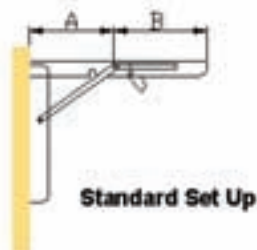
Table Bracket



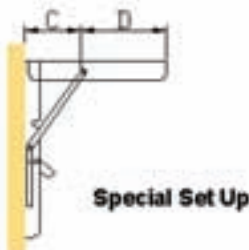
PART NO.	WALL BRACKET	TABLE BRACKET
7994S	2" x 3-3/8"	1-11/16" x 2-15/16" x 1"

SS 304 Folding Bracket

- Ideal for chair arms and tables .



Standard Set Up



Special Set Up



PART NO.	A	B	C	D	WIDTH
7995S	5-1/2"	6-1/4"	3-1/2"	2-3/4"	1"

SS 304 Heavy Duty Folding Bracket

- Ideal for jump-seats and fold-out tables
- Supporting arms are stronger than those of 7995S

PART NO.	A	B	C	D	WIDTH
7996S	5-1/2"	6-1/4"	3-1/2"	2-3/4"	1"



SS 304 Spring Loaded Flush Lift Handle

PART NO.	LENGTH	WIDTH	DEPTH
7740S	2-9/16"	2-3/16"	7/16"
7742S	1-3/4"	1-1/2"	7/16"



SS 304 Spring Loaded Flush Lift Handle

PART NO.	LENGTH	WIDTH	DEPTH
7743S	3"	2-3/16"	5/16"



SS 316 Cast Ring Pull

PART NO.	LENGTH	WIDTH	DEPTH
6090S	1-7/8"	1-1/2"	1/2"



SS 316 Cast Ring Pull

PART NO.	LENGTH	WIDTH	DEPTH
6090S-N	2-7/16"	1-3/4"	11/32"



SS 316 Cast Ring Pull

PART NO.	O.D.	DEPTH
6092S	2"	1/2"



SS 316 Cast Lift Handle

PART NO.	LENGTH	WIDTH	DEPTH
6094S	2-1/4"	3"	3/8"



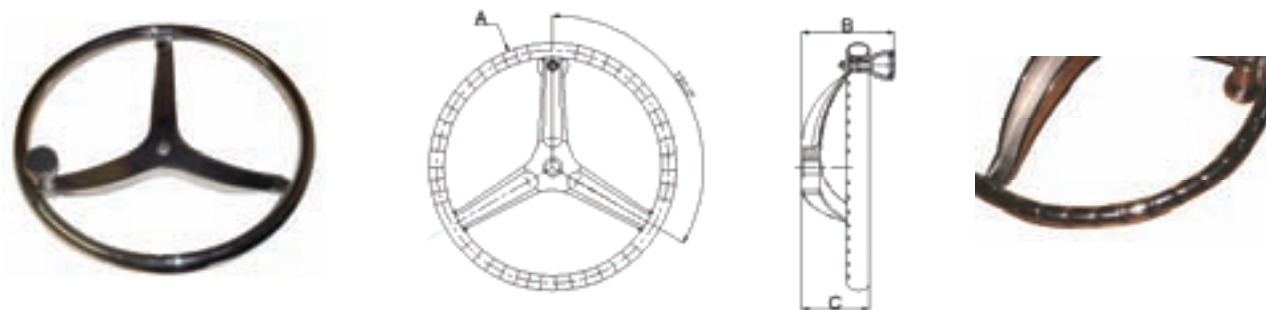
Brass Ring Pull

PART NO.	LENGTH	WIDTH	DEPTH
2058B	1-3/4"	1-1/2"	1/2"
2060B	2-9/16"	2"	1/2"



SS Heavy Duty Steering Wheel with Control Knob and Finger Grips

- ▼ This wheel features finger grips and a control knob for easy maneuvering.



PART NO.	A	B	C	REMARK
7319SRK	13-1/2"	5"	3-1/2"	Wheel without nut
7320SRK	15-1/2"	5"	3-1/2"	Wheel without nut
7327NT	5/8-18 Wheel Nut for Teleflex Hydraulic Steering System			
7328NT	1/2-20 Wheel Nut for Teleflex Mechanical Steering System			
7329NT	M12 Wheel Nut (M12*1.75)			



Wheel Nut

SS Sport Wheel with Control Knob and Finger Grips

- ▼ This wheel features finger grips and a control knob for easy maneuvering.
- ▼ Fits 3/4" tapered shaft.

PART NO.	SIZE	DISH DEGREE
7342SFGK	15-1/2"	10
7343SFGK	13-1/2"	10



SS Sport Wheel and Control Knob

- ▼ This wheel features finger grips and a control knob for easy maneuvering.
- ▼ Fits 3/4" tapered shaft.

PART NO.	SIZE	OTHER
7350SRK	13-1/2"	Wheel without nut
7352SRK	15-1/2"	Wheel without nut



SS Destroyer Wheel with Spring Cap

- ▼ Spring cap, no set screws needed for installation
- ▼ Approved by NMMA
- ▼ Fits 3/4" tapered shaft.

PART NO.	CAP	SIZE	DISH DEGREE
7308	7406-PC	11"	25
7400PC	7406-PC	22"	10
7401PC	7406-PC	18"	10
7402PC	7406-PC	15-1/2"	25
7402PC10	7406-PC	15-1/2"	10
7403PC	7406-PC	13-1/2"	25
7405PC	7406-PC	20"	1
7406-PC	Spring cap only		

PART NO.	CAP	SIZE	DISH DEGREE
7402SPC	7406-SPC	15-1/2"	25
7402SPC10	7406-SPC	15-1/2"	10
7403SPC	7406-SPC	13-1/2"	25
7406-SPC	Spring cap with SS cover		

**7406-PC****7406-SPC**

(CAP WITH SS COVER)

SS Destroyer Wheel with Foam Cover

- ▼ Fits 3/4" Tapered Shaft. Approved by NMMA

PART NO.	SIZE	COLOR	DISH DEGREE
7402BFC	15-1/2"	Black	25
7402GFC	15-1/2"	Grey	25
7403BFC	13-1/2"	Black	25
7403GFC	13-1/2"	Grey	25
7408BFC	11"	Black	25
7408GFC	11"	Grey	25
7406SA	SS cap for wheel		
7406	Black Bakelite cap		
7407	Set screw for wheel		

**Europa Steering Wheel**

- ▼ Fits 3/4" Tapered Shaft
- ▼ UV Black Resistant Wheel Cover
- ▼ CE Certified

PART NO.	SIZE	SPOKE	DISH DEGREE
9988SAB	13-1/2"	5	15



SS Destroyer Wheel with Finger Grips

PART NO.	SIZE	DISH DEGREE	SPOKE
7302SFG	15-1/2"	25	6
7303SFG	13-1/2"	25	6

**SS Sailboat Wheel**

- ▼ Fits 1" straight shaft. With 2-5/16" hub length and 1/4" keyway.

PART NO.	SIZE	RIM SIZE	SPOKE
7549	22"	7/8"	1/2"-6
7550	24"	7/8"	1/2"-6
7501	26"	7/8"	1/2"-6
7502	28"	7/8"	1/2"-6
7503	30"	7/8"	1/2"-6
7504	32"	7/8"	1/2"-6
7505	34"	7/8"	1/2"-6
7506	36"	7/8"	1/2"-6
7507	38"	1"	1/2"-6
7508	40"	1"	1/2"-6
7509	42"	1"	1/2"-6

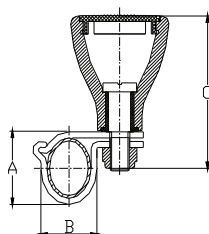
**Bronze Shaft Adapter**

- ▼ This bronze adapter fits wheels with 1" straight shaft to 3/4" tapered shaft.

PART NO.	LENGTH
7514	2-1/4"

**SS Wheel Control Knob**

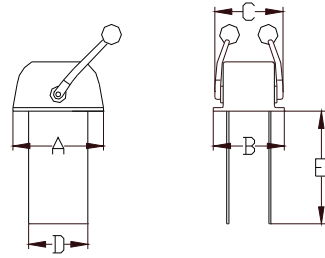
- ▼ The SS mirror finished knob with a plastic cover and a nylon nut gives the wheel easy control.
- ▼ Fits most oval shape wheel rim.



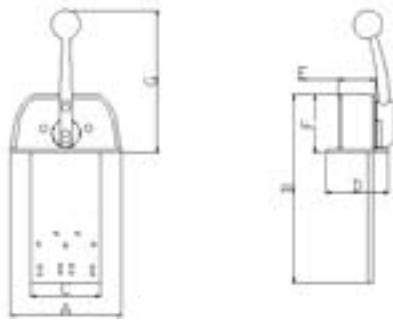
PART NO.	A	B	C
7300SCK	15/16"	3/4"	1-15/16"

SS Dual Function Engine Control

- Engine Control with SS316 Cast Arms and Housing



PART NO.	A	B	C	D	E
8521SS	5-3/8"	4-1/4"	5"	3-3/8"	6-1/4"
8521SS-AW	Replaceable arm for 8521SS and 8522SS				

SS Single Function Engine Control

PART NO.	A	B	C	D	E	F	G
8522SS	5-3/8"	9-3/16"	3-3/8"	3"	1-3/4"	2-27/32"	6-15/16"

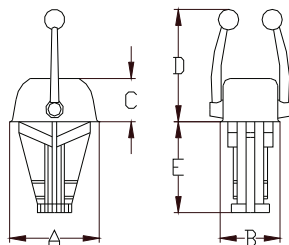
Detent for Engine Control

- Set includes a spring, a steel ball and a piece of plate.

PART NO.	Description
8522SS-KIT	Detent for 8521SS and 8522SS

**SS Dual Function Engine Control**

- 316 SS Stamped Housing and 316 SS Cast Arms to prevent rusting.



PART NO.	A	B	C	D	E
8523SS	6-3/8"	4-3/4"	3-3/16"	9"	6-15/16"
8523SS-AW	Replaced Arm For 8523SS				
8523SK-R	Red Knob for 8521SS and 8523SS				
8523SK-B	Black Knob for 8521SS and 8523SS				



SS Rectangular Opening Port

CE Approved , According to ISO/DIS 12216.

- SS 316 machined rolled frames.
- SS 316 cast hinges with set screw to adjust hinge pressure.
- Weather-resistant thermoplastic NEOPRENE gasket.
- High strength tempered glass.
- Glass Tinting and Frosting available through special order



PART NO.	DESCRIPTION	OVERALL DIA.	
7082A20	SS Port 8x18x2" Sloped	10-3/8x20-3/8"	
7082A20-ADJ	SS Port 8x18x2" Sloped w/Plunger Arm	10-3/8x20-3/8"	
7083SN	Screen For 8x18" SS Port		
7085A10	SS Port 5x12x1" Sloped	7-3/8x14-1/4"	
7085A15	SS Port 5x12x1-1/2" Sloped	7-3/8x14-1/4"	
7085A20	SS Port 5x12x2" Sloped	7-3/8x14-1/4"	
7086SN	Screen For 5x12" SS Port		
7087A15	SS Port 7x14x1-1/2" Sloped	9-3/8x16-3/8"	
7087S15	SS Port 7x14x1-1/2" Straight	9-3/8x16-3/8"	
7087A20	SS Port 7x14x2" Sloped	9-3/8x16-3/8"	
7088SN	Screen For 7x14" SS Port		
7089A15	SS Port 4-3/4x14-3/4x1-1/2" Sloped	7-1/2x17-1/2"	
7089A15-ADJ	SS Port 4-3/4x14-3/4x1-1/2" Sloped w/Plunger Arm	7-1/2x17-1/2"	
7089A20D	SS Port 4-3/4x14-3/4x2" Straight w/Drain Tube	7-1/2x17-1/2"	
7089A20D-ADJ	SS Port 4-3/4x14-3/4x2" Straight w/Drain Tube + Adjustable Arm	7-1/2x17-1/2"	
7090SN	Screen For 4-3/4x14-3/4" SS Port		
7091A20	SS Port 4x14-3/4x2" Sloped	6-5/8x17-1/2"	
7091A20-ADJ	SS Port 4x14-3/4x2" Sloped w/Plunger Arm	6-5/8x17-1/2"	
7091A25-ADJ	SS Port 4x14-3/4x2-1/2" Sloped w/Plunger Arm	6-5/8x17-1/2"	
7091A275	SS Port 4x14-3/4x2-3/4" Sloped	6-5/8x17-1/2"	
7091A275-ADJ	SS Port 4x14-3/4x2-3/4" Sloped w/Plunger Arm	6-5/8x17-1/2"	
7092SN	Screen For 4x14-3/4" SS Port		
7093A15	SS Port 6x25x1-1/2" Sloped	8-3/8x27-3/4"	
7093A20	SS Port 6x25x2" Sloped	8-3/8x27-3/4"	
7094SN	Screen For 6x25" SS Port		
7096A10	SS Port 4x10x1" Sloped	6-5/8x12-5/8"	
7096A15	SS Port 4x10x1-1/2" Sloped	6-5/8x12-5/8"	
7096A20	SS Port 4x10x2" Sloped	6-5/8x12-5/8"	
7097SN	Screen For 4x10" SS Port		
PART NO.	DESCRIPTION	PART NO.	DESCRIPTION
7122	Gasket For SS Port Cover	7123	Knob w/Bolt
7124	3-5/8" Plunger Arm	7125	4-3/16" Plunger Arm
7126	4-13/16" Plunger Arm		
8130BC	8" Chrome-Plated Brass Port Light Chain w/ "T" Bar, Screw Size #6		
8130B	8" Polished Brass Portlight Chain w/ Anchor, Screw Size #6		
8131B	8" Polished Brass Port Light Chain w/ "T"Bar, Screw Size #6		

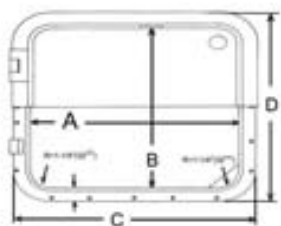
We Accept Custom-Orders: Hatches, Ports, Windows, and Doors

**LOW PROFILE DECK HATCH****CE Approval. According to ISO/DIS 12216.**

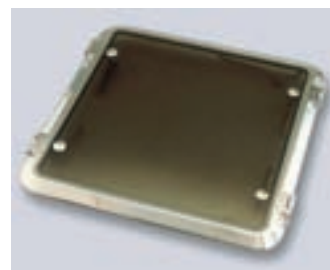
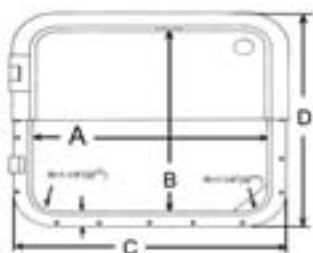
- ✦ Elegant Low Profile
- ✦ Glare-resistant
- ✦ 18-8 non-magnetic stainless steel frames, hatch arms and hinges.
- ✦ Hand polished and electro-polished to protect against hatches corrosion.
- ✦ Frames and hatches are made from machine rolled stock to ensure strength and light weight.
- ✦ Positive easy to operate stainless arms allowing full 180 degree opening with pull-turn knobs to hold hatch open.
- ✦ Adjustable injection molded Nylon 66 handles.
- ✦ Set screw adjustment in each hinge to prevent hinge pins from falling out.
- ✦ Tough, glare resistant acrylic tops.
- ✦ Inside opening, inside/outside opening and double opening available.
- ✦ Inside/outside models with 100% Stainless Steel snag free handle.
- ✦ Double opening models with quick snap-release dogs and 100% stainless fast pins for easy and quick change of hinge location.
- ✦ Oil resistant Neoprene gaskets.

Custom Orders Available

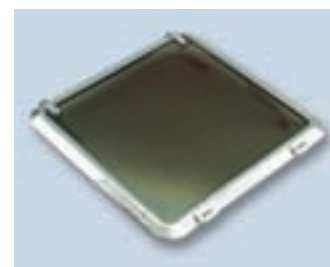
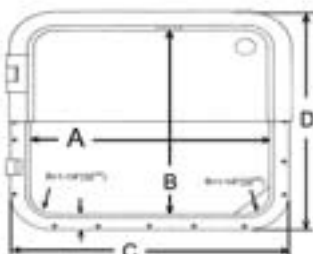
- ✦ Acrylic Color Change: Clear, Tan or Green
- ✦ Lexan Glass
- ✦ Gas / Plunger Arm

Inside Opening

PART NO.	CUTOUT SIZE		OVERALL		ACRYLIC	
	A	B	C	D	THICKNESS	WEIGHT
LDH-08-I	8-1/8"	13-3/4"	10-5/8"	16-1/4"	1/2"	7.7 lb
LDH-10-I	10"	10"	12-1/2"	12-1/2"	1/2"	7.7 lb
LDH-20-I	12-1/2"	17-1/2"	15"	20"	1/2"	12.3 lb
LDH-30-I	14-1/2"	19-1/2"	17"	22"	1/2"	16.3 lb
LDH-40-I	16-1/2"	16-1/2"	19"	19"	1/2"	15.4 lb
LDH-50-I	19-1/2"	19-1/2"	22"	22"	1/2"	20.9 lb
LDH-60-I	24"	24"	26-1/2"	26-1/2"	1/2"	29.0 lb
LDH-70-I	31"	31"	33-1/2"	33-1/2"	1/2"	42.7 lb

In/Outside Opening

PART NO.	CUTOUT SIZE		OVERALL		ACRYLIC	
	A	B	C	D	THICKNESS	WEIGHT
LDH-30-O	14-1/2"	19-1/2"	17"	22"	1/2"	16.7 lb
LDH-40-O	16-1/2"	16-1/2"	19"	19"	1/2"	15.8 lb
LDH-50-O	19-1/2"	19-1/2"	22"	22"	1/2"	21.6 lb
LDH-60-O	24"	24"	26-1/2"	26-1/2"	1/2"	27.3 lb
LDH-70-O	31"	31"	33-1/2"	33-1/2"	1/2"	43.1 lb

Double Opening

PART NO.	CUTOUT SIZE		OVERALL		ACRYLIC	
	A	B	C	D	THICKNESS	WEIGHT
LDH-50-D	19-1/2"	9-1/2"	22"	22"	1/2"	22.4 lb
LDH-60-D	24"	24"	26-1/2"	26-1/2"	1/2"	30.1 lb
LDH-70-D	31"	31"	33-1/2"	33-1/2"	1/2"	44 lb



SS 316 Opening Ports

- ▼ Special Order Item.
- ▼ Standard Spigot Depth: 1-1/2", 2" and 2-1/2".
- ▼ Custom Depth Available.



PART NO.	OPENING DIA.	OVERALL DIA.	SPIGOT LENGTH	GLASS THICKNESS	CUT OUT SIZE
LSR-0600	6"	8-5/8"	1-1/2"	5/16"	6-3/8"
LSR-0800	8"	10-5/8"	1-1/2"	5/16"	8-3/8"
LSR-1000	10"	12-7/8"	1-1/2"	2/8"	10-1/2"

Bronze Round Opening Ports

- ▼ Spigot length can be custom ordered.

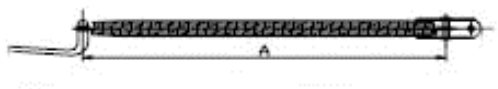
Also Available:

- ▼ Rectangular opening ports.
- ▼ Oval opening ports.
- ▼ Elliptical opening ports.
- ▼ Fixed ports.



PART NO.	OPENING DIA.	OVERALL DIA.	SPIGOT LENGTH	GLASS THICKNESS	MATERIAL THICKNESS
1180B	4"	7"	1-1/2"	1/4"	5/16"
1182B	6"	9"	1-1/2"	1/4"	5/16"
1184B	8"	11-1/4"	1-1/2"	1/4"	5/16"
1190B	10"	13-3/4"	1-1/2"	1/4"	5/16"
1186B	12"	15-1/4"	1-1/2"	1/4"	5/16"

SS 304 Hatch Spring Holder



PART NO.	A	DIAMETER
02912S	8-1/4"	7/16"
02912SW	02912S with SS inner wire	
02913S	10-1/4"	9/16"
02913SW	02913S with SS inner wire	
02914S	8-1/4"	7/16"
02914SW	02914S with SS inner wire	
02915S	10-1/4"	9/16"
02915SW	02915S with SS inner wire	
02916SW	11-1/4"	7/8"



02912S/02913S



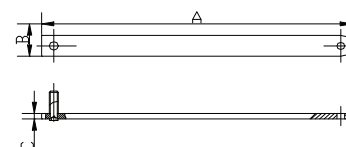
02914S/02915S



02916SW

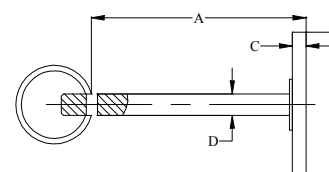
SS 304 Hatch Adjuster

PART NO.	A	B	C
01781SP	6-3/16"	19/32"	5/32"
01782SP	8"	19/32"	5/32"
01783SP	10-1/4"	19/32"	5/32"



Hatch Cover Pull

PART NO.	A	B	C	D
01232SPE	1-15/16"	1-1/4"	1/8"	3/16"
01232RG	Rubber Gasket			

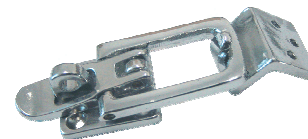


T-Bar and Knob Hatch Fastener**2062B/2062BC****2064B/2064BC**

PART NO.	MATERIAL	OPEN LENGTH	CLOSED LENGTH
2062B	Brass	4"	2"
2064B	Brass	4"	2"

Anti-Rattle Fastener

PART NO.	MATERIAL	BASE SIZE
2066B	Brass	1-3/4" x 2-3/4"
2066SS	SS 316	1-3/4" x 2-3/4"

***Chrome-Plated Brass Anti-Rattle Fastener*****8090BC****8091BC**

PART NO.	MATERIAL	BASE SIZE	MOUNT
8090BC	Chrome-Plated Brass	1-1/4" x 3"	Flush
8091BC	Chrome-Plated Brass	1-1/4" x 3"	Angle

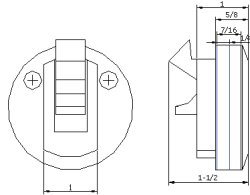
SS 304 Hatch Lock Fastener

PART NO.	MATERIAL	LENGTH	CUT HOLE
8088SS	SS 304	2-1/4"	3/4"



Turning Lock Lift Handle

PART NO.	MATERIAL	BASE SIZE	LOCK ADJ.
2050B	Brass	2-5/8" x 3"	1-3/8"- 3-3/8"
2051B	Brass	3" x 3-3/4"	1-3/8"- 4-5/8"
2051S	SS 316	3" x 3-3/4"	1-3/8"- 4-5/8"

**Flush Pull Latch**

PART NO.	LOCKING	DOOR THICKNESS	O.D.	GASKET THICKNESS
7120S	No	1-1/2"	2-3/8"	STANDARD 1/4"
7121S	Yes	1-1/2"	2-3/8"	STANDARD 1/4"

PART NO.	GASKET THICKNESS	GASKET DIAMETER
7120SR-2	1/16"	2-3/8"
7121SR-6	1/4"	2-3/8"
7121SR-9	3/8"	2-3/8"

Chrome-Plated Brass Grab Handle

PART NO.	LENGTH	WIDTH	HEIGHT
8095BC	4-3/4"	1-1/4"	7/8"

**Heavy Duty Grab Rail**

PART NO.	MATERIAL	LENGTH	WIDTH	HEIGHT
6539S	SS 316	5-21/32"	1-21/32"	1-1/2"



In Line Bilge Blower (Injection Molded ABS)

- ▼ 12V DC, 2.7A
- ▼ Water Resistant

PART NO.	COLOR	HOSE	LENGTH	HEIGHT
BOW403	White	3"	5"	3-11/16"
BOB403	Black	3"	5"	3-11/16"



SS 304 Round Opening Cowl Vent with Key

PART NO.	PLATE I.D.	MOUTH DIA.	HEIGHT	COLOR
1350SK-W	3"	6-1/4"	9-3/8"	WHITE
1350SK-R	3"	6-1/4"	9-3/8"	RED
1360SK-W	4"	8-1/2"	11-1/2"	WHITE
1360SK-R	4"	8-1/2"	11-1/2"	RED
6361S	3" SS deck plate only			
6362S	4" SS deck plate only			
6361SD	3" SS deck plate only (Star Pattern)			
6362SD	4" SS deck plate only (Star Pattern)			
1350KY	Key only, for 3" and 4" deck plates			



1350SK-W



6361S



6361SD

SS 316 Teardrop Opening Cowl Vent with Deck Plate

PART NO.	PLATE I.D.	PLATE O.D.	MOUTH SIZE	HEIGHT
6306SKT	4"	5-1/2"	7-1/2 x 5"	10-1/2"



Cast Bronze Oval Cowl Vent with Key and Deck Plate

PART NO.	PLATE I.D.	MOUTH DIA.	HEIGHT	COLOR
1300B/82B	4"	6-1/2" x 4-1/2"	9-3/4"	RED
1303B/80B	3"	5-3/4" x 3-3/4"	9"	RED
1300B	4" Bronze cowl vent only			
1303B	3" Bronze cowl vent only			
1382B	4" Bronze deck plate only			
1380B	3" Bronze deck plate only			



Chrome-Plated Brass Deck Plate

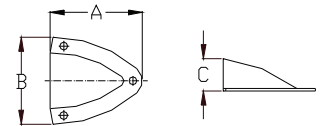
PART NO.	FLANGE	PLATE I.D.
1384BC	7-3/4"	5"

**Bronze Cast Deck Plate Key**

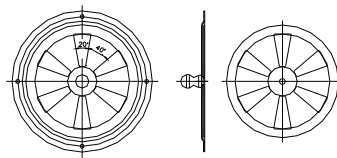
PART NO.	LENGTH
1393B	6"

**SS 304 Midget Vent**

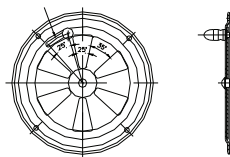
- Stamped 304 Stainless
- Great for covering battery box vent holes, for water & fuel tank ventilation or for protecting small cables.



PART NO.	A	B	C
6564S-1	1-5/8"	1-3/4"	1/2"
6566S-1	2-1/4"	2-1/8"	5/8"

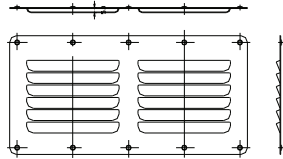
**SS 304 Butterfly Vent (Center Knob)**

PART NO.	THICKNESS	O.D.
7720S-S-CT	0.05"	4"
7720S-L-CT	0.05"	5"

**SS 304 Butterfly Vent (Side Knob)**

PART NO.	THICKNESS	O.D.
7720S-S-SD	0.05"	4"
7720S-L-SD	0.05"	5"



SS 304 Stamped Louvered Vent

PART NO.	THICKNESS	LENGTH	WIDTH
7721S	0.03"	5"	2-1/2"
7722S	0.03"	5"	4-1/2"
7723S	0.03"	9"	4-1/2"
7723SV	0.03"	9"	5"

ABS Louvered Vent

PART NO.	COLOR	LENGTH	WIDTH
58824W	White	5-1/2"	4-7/8"
58824B	Black	5-1/2"	4-7/8"
58825W	White	10-1/4"	4-7/8"
58825B	Black	10-1/4"	4-7/8"

**SS 304 Louvered Vent**

PART NO.	SLOTS	LENGTH	WIDTH	DEPTH
7726S-8	8	16-13/16"	3"	1-1/4"

**ABS Plastic Slotted Vent**

PART NO.	SLOTS	LENGTH	WIDTH	COLOR
58829W	7	17-7/8"	3-7/16"	White
58829B	7	17-7/8"	3-7/16"	Black
58829CH	7	17-7/8"	3-7/16"	Chrome



SS 304 Louvered Vent

PART NO.	SLOTS	LENGTH	WIDTH	DEPTH
7727S-5	5	12-7/8"	4-3/8"	1-1/2"

***ABS Slotted Ventilator***

PART NO.	SLOTS	LENGTH	WIDTH	COLOR
58828W	5	13-1/4"	4-3/4"	White
58828B	5	13-1/4"	4-3/4"	Black

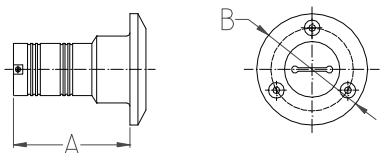
***SS 304 Stamped Drain Cover***

PART NO.	O.D.	MATERIAL THICKNESS
7728S	3-1/4"	0.035"



SS 316 Deck Fill

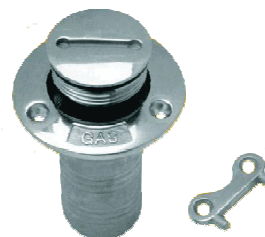
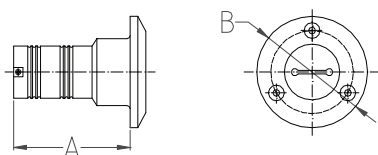
- With color coded text and international symbol.
- Meets CE Requirements.



PART NO.	HOSE SIZE	A	B	MARKING
6002SEU	1-1/2"	3"	3"	WASTE, with black symbol
6004SEU	1-1/2"	3"	3"	DIESEL, with green symbol
6005SEU	1-1/2"	3"	3"	GAS, with red symbol
6006SEU	1-1/2"	3"	3"	WATER, with blue symbol
6007SEU	2"	3-3/16"	3-1/2"	GAS, with red symbol
6008SEU	2"	3-3/16"	3-1/2"	DIESEL, with green symbol
6009SK	Standard key for all deck fills			
6009SEU	Cap only.	Hose size: 1-1/2"	Thread: 1-1/2"	11-1/2 NPSM
6009S2EU	Cap only.	Hose size: 2"	Thread: 1-7/8"	11-1/2 NPSM

SS 316 Deck Fill

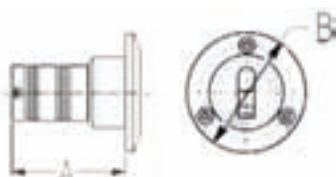
- CNC machined threads.
- Interchangeable caps.



PART NO.	HOSE SIZE	A	B	MARKING
6002S	1-1/2"	3"	3"	WASTE
6004S	1-1/2"	3"	3"	DIESEL
6005S	1-1/2"	3"	3"	GAS
6006S	1-1/2"	3"	3"	WATER
6007S	2"	3-3/16"	3-1/2"	GAS
6008S	2"	3-3/16"	3-1/2"	DIESEL
6009S	Cap only.	Hose size: 1-1/2"	Thread: 1-1/2"	11-1/2NPSM
6009SPE	Cap with chain.	Hose size: 2"	Thread: 1-7/8"	11-1/2NPSM

SS 316 Deck Fill with Colored Nylon Cap

- With color coded text and international symbol.
- Replaceable colored plastic cap.



PART NO.	HOSE SIZE	A	B	MARKING
6002SPC	1-1/2"	3"	3"	WASTE, with black symbol
6004SPC	1-1/2"	3"	3"	DIESEL, with green symbol
6005SPC	1-1/2"	3"	3"	GAS, with red symbol
6006SPC	1-1/2"	3"	3"	WATER, with blue symbol

Colored Plastic Cap

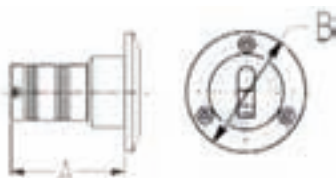
- For stainless steel or nylon deck fills.



PART NO.	DESCRIPTION	COLOR
6002CAP	Pipe thread 1-1/2" 11-1/2 NPSM	BLACK
6004CAP	Pipe thread 1-1/2" 11-1/2 NPSM	GREEN
6005CAP	Pipe thread 1-1/2" 11-1/2 NPSM	RED
6006CAP	Pipe thread 1-1/2" 11-1/2 NPSM	BLUE

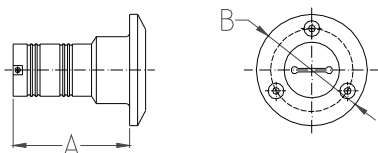
Nylon Deck Fill with Colored Cap

- Replaceable colored cap.



PART NO.	HOSE SIZE	A	B	MARKING
6002NPC	1-1/2"	3"	3"	WASTE, with black symbol
6004NPC	1-1/2"	3"	3"	DIESEL, with green symbol
6005NPC	1-1/2"	3"	3"	GAS, with red symbol
6006NPC	1-1/2"	3"	3"	WATER, with blue symbol

SS 316 Deck Fill for Sailboats



PART NO.	HOSE SIZE	A	B	MARKING
6002SAIL	1-1/2"	3"	3"	WASTE
6004SAIL	1-1/2"	3"	3"	DIESEL
6006SAIL	1-1/2"	3"	3"	WATER
6009SAIL	Replacement cap for sail boat deck fill—Cap thread: 1-1/4" 12 NPS			

SS 316 Deck Fill—Waste

- With color coded text and international symbol.
- Meets U.S.A. Coast Guard and Europe CE Requirements.

PART NO.	HOSE SIZE	DESCRIPTION
6002S2CG	1-1/2"	2" Cap pipe thread 1-1/2" 11-1/2 NPSM (U.S.A)
6002S2EU	1-1/2"	2" Cap pipe thread G 1-1/2" (Europe)

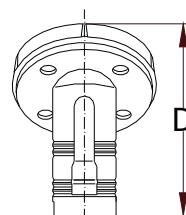
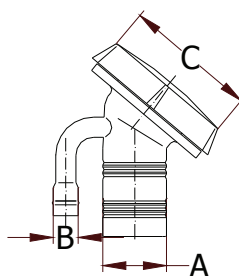


SS 316 Deck Fill with Breathable Cap and Internal Vent—50° Angle

- CNC machined threads.
- Interchangeable caps.



6005S-ACV

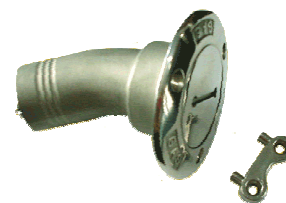
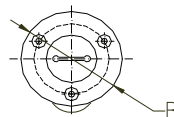
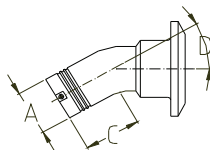


6005S-ACVP

PART NO.	A	B	C	D	MARKING
6005S-ACV	1-1/2"	5/8"	3-1/4"	3-3/4"	GAS
6006S-ACV	1-1/2"	5/8"	3-1/4"	3-3/4"	WATER
6005S-ACVP	6" SS 304 deck fill plate to be used with 6005S-ACV and 6006S-ACV				

SS 316 Deck Fill—30° Angle

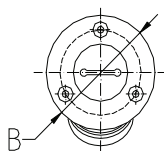
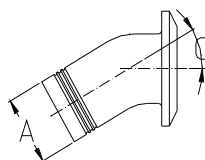
- ▼ CNC machined threads.
- ▼ Interchangeable caps.



PART NO.	A	B	C	D	MARKING
6005-30S	1-1/2"	3-1/2"	3-1/4"	30°	GAS
6005-30SPE	1-1/2"	3"	3-1/4"	30°	GAS

SS 316 Deck Fill—30° Angle

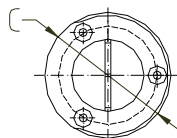
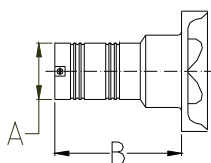
- ▼ CNC machined threads.
- ▼ Interchangeable caps.



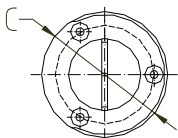
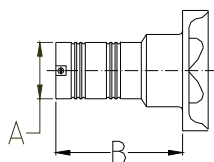
PART NO.	A	B	C	MARKING
6007-30S	2"	3-1/2"	30°	GAS
6007-30S-GSK	Gasket only for 6007-30S			

SS 316 Deck Fill with Splash Guard

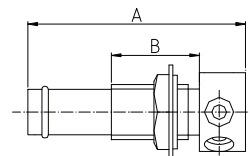
- ▼ CNC machined threads.
- ▼ Interchangeable caps.



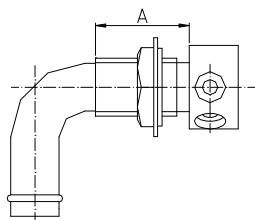
PART NO.	A	B	C	MARKING
6000S	1-1/2"	3"	3"	GAS
6000S-C	Replacement cap only			

Chrome-Plated Zamak Deck Fill with Splash Guard

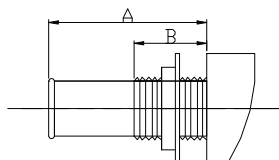
PART NO.	A	B	C	MARKING
57020CZ	1-1/2"	2-1/2"	3"	GAS
57020CZ-C	Replacement cap only			

Straight Air Vent—Round Head

PART NO.	MATERIAL	HOSE SIZE	A	B
6600S	SS 316	5/8"	2-7/8"	1"
6600BC	Chrome-Plated Brass	5/8"	2-3/8"	1"

90 Degree Air Vent—Round Head**6601S****6602S****6602SCAP**

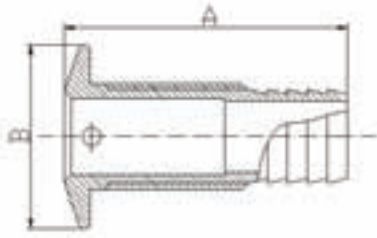
PART NO.	MATERIAL	HOSE SIZE	HOLE DIRECTION	A
6601S	SS 316	5/8"	UP	1-1/8"
6601SCVR	Same as 6601S with one protective cover			
6601BC	Chrome-Plated Brass	5/8"	UP	7/8"
6602S	SS 316	5/8"	DOWN	1-1/8"
6602BC	Chrome-Plated Brass	5/8"	DOWN	7/8"
6603S	SS 316	1"	DOWN	1-1/8"
6602SCAP	Same as 6602S with two caps			
6602S-CAP	Two caps (SS 304) only			
6602S-VCR	Same as 6602S with one protective cover			
6603S-CAP	SS 316	1"	DOWN	1-1/8"

Air Vent—Square Head

PART NO.	MATERIAL	HOSE SIZE	A	B
6604S	SS 316	5/8"	2-3/4"	1"
6604CZ	Chrome-Plated Zamak	9/16"	2"	1-1/4"

SS 316 Thru-Hull Connection

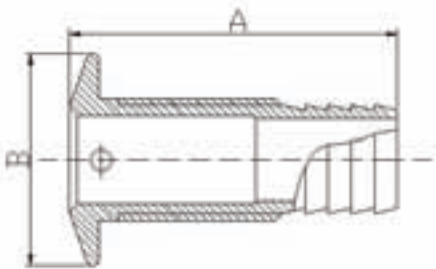
- Flange is machined to fit hull and groove to retain bedding compound.
- Neck is threaded to about 3/16 inches from flange.
- For thin hull sections up to 5/8 inches maximum.
- Set of thru-hull and nut.



SHORT THREAD



SHORT THREAD					
PART NO.	HOSE SIZE	FOR HULL	THREAD	A	B
6650S	5/8"	5/8"	1/2-14NPS	2-1/4"	1-1/2"
6651S	3/4"	1/2"	3/4-14NPS	2-1/2"	1-7/8"
6652S	1"	5/8"	1-11.5NPS	2-1/2"	2-1/4"
6653S	1-1/8"	5/8"	1-11.5NPS	2-1/2"	2-1/4"
6654S	1-1/4"	3/4"	1.25-11.5NPS	3"	2-3/4"
6655S	1-1/2"	5/8"	1.5-11.5NPS	3-1/8"	3"

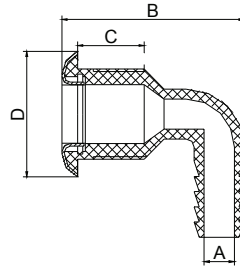


STANDARD THREAD

STANDARD THREAD					
PART NO.	HOSE SIZE	FOR HULL	THREAD	A	B
6650S-L	5/8"	1-1/4"	1/2-14NPS	3"	1-1/2"
6651S-L	3/4"	1-3/4"	3/4-14NPS	3-3/4"	1-3/4"
6652S-L	1"	1-3/4"	1-11.5NPS	4"	2-1/4"
6653S-L	1-1/8"	1-7/8"	1-11.5NPS	4"	2-1/4"
6654S-L	1-1/4"	1-7/8"	1.25-11.5NPS	4-1/8"	2-3/4"
6655S-L	1-1/2"	1-1/8"	1.5-11.5NPS	4-1/4"	3"

90° Nylon Thru-Hull

- ▼ Nylon and SS 316 stamped face.
- ▼ Nylon 66 with 30% glass-filled body.



PART NO.	HULL SIZE A	B	C	D
6651N-90	3/4"	2-3/4"	1"	1-7/8"
6653N-90	1-1/8"	4-1/2"	1-5/8"	2-3/8"
6655N-90	1-1/2"	4-7/16"	3"	2-3/8"

Nylon Thru-Hull with Trim Cover

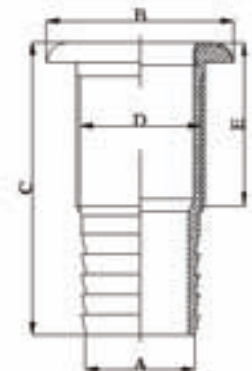
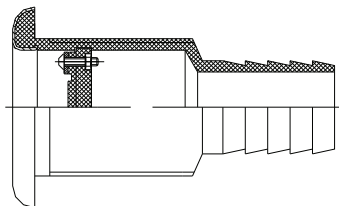
- ▼ For thin hull sections up to 5/8 inches maximum.
- ▼ Body is nylon 66 + 30 glass trim SS 316 cover plate.
- ▼ Set of thru-hull and nut.



PART NO.	A	B	C	D	E
6650N	5/8"	1-7/8"	3-3/16"	1-3/8"	1-1/8"
6651N	3/4"	1-7/8"	3-7/16"	1-3/8"	1-1/8"
6652N	1"	1-7/8"	3-3/8"	1-3/8"	1-1/8"
6653N	1-1/8"	1-7/8"	3-1/16"	1-3/8"	1-1/8"
6654N	1-1/4"	2-3/8"	4-1/16"	1-5/8"	1-1/4"
6655N	1-1/2"	2-3/8"	4-1/16"	1-5/8"	1-1/4"

NYLON THRU-TRANSOM SCUPPER

- ▼ Contains rubber flapper to prevent water from flowing in.



PART NO.	A	B	C	D	E
6656N-SCP	1-1/2"	3-1/4"	4-3/4"	2-1/4"	2-1/2"

SS 316 Thru-Hull with SS 304 Mesh Strainer

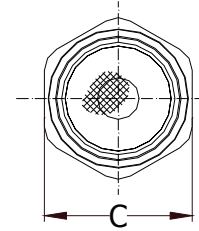
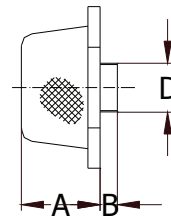
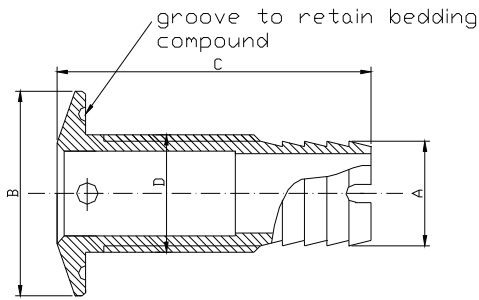
- Flange is machined to fit hull and groove to retain bedding compound.
- Neck is threaded to about $\frac{3}{16}$ inches from flange.
- For thin hull sections up to $\frac{5}{8}$ inches maximum.
- The SS Mesh Strainer and can be screwed on and tightened with a wrench.



6651S-LWM



6651S-MESH



PART NO.	A	B	C	THREAD
6651S-LWM	$\frac{3}{4}$ "	$1\frac{7}{8}$ "	$2\frac{1}{2}$ "	$\frac{3}{4}$ -14NPS
6651S-MESH	$1\frac{5}{16}$ "	$9\frac{1}{32}$ "	$2\frac{3}{8}$ "	$\frac{1}{2}$ -14NPT

SS 304 Transom Exhaust Pipe

PART NO.	HOSE PIPE	FLANGE	LENGTH
7570S	$1\frac{1}{2}$ "	$3\frac{1}{4}$ "	$4\frac{9}{16}$ "
7571S-TWC	$1\frac{7}{8}$ "	$3\frac{5}{8}$ "	$5\frac{9}{16}$ "
7573S-TWC	$2\frac{1}{2}$ "	$4\frac{1}{8}$ "	$5\frac{9}{16}$ "
7574S	3"	$4\frac{3}{4}$ "	$4\frac{15}{16}$ "



Bronze Flush Head Thru Hull

PART NO.	PIPE SIZE	LENGTH OF STEM
1048B	$\frac{1}{2}$ "	$2\frac{1}{4}$ "
1050B	$\frac{3}{4}$ "	$2\frac{1}{4}$ "
1052B	1"	$2\frac{1}{4}$ "
1054B	$1\frac{1}{4}$ "	3"
1056B	$1\frac{1}{2}$ "	3"



90° Bronze Pipe-to-Hose Adapter

PART NO.	HOSE SIZE	PIPE SIZE
1060B	3/4"	3/4"
1062B	1"	1"
1064B	1-1/4"	1-1/4"
1064SPE	1-1/2"	1-1/4"
1066B	1-1/2"	1-1/2"



Straight Bronze Pipe-to-Hose Adapter

PART NO.	HOSE SIZE	PIPE SIZE
1061B	3/4"	3/4"
1063B	1"	1"
1065B	1-1/4"	1-1/4"
1065SPE	1-1/2"	1-1/4"
1067B	1-1/2"	1-1/2"
1068B	1/2"	1/2"
1069B	5/8"	1/2"



Bronze Intake Strainer with Lock Nut

PART NO.	PIPE SIZE	LENGTH OF STEM
1073B	1-1/2"	3"
1074B	3/4"	2-1/4"
1076B	1"	2-1/4"
1078B	1-1/4"	3"



Bronze Intake Strainer with Removable Cover

PART NO.	PIPE SIZE	LENGTH OF STEM
1079B	1/2"	2-1/2"
1080B	3/4"	2-1/2"
1081B	1"	2-1/2"
1082B	1-1/4"	3"
1083B	Replaceable cover	



Nylon Plug

- Our nylon plugs are fitted with a rubber gasket to ensure a water-tight fit

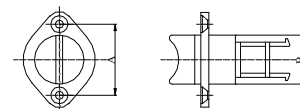
PART NO.	DESCRIPTION
54200	Nylon plug only (Fits 54201, 54202, 54203, 54205)



Drain Plug with Nylon Plug

- This chrome-plated brass or SS drain uses a nylon plug with a rubber gasket.

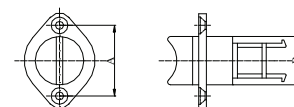
PART NO.	MATERIAL	A	B	WEIGHT
54201	Chrome-Plated Brass	1-1/2"	1"	42g
54202	SS 316	1-1/2"	1"	38g



Nylon Garboard with Nylon Plug

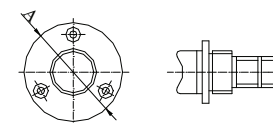
- This nylon drain uses a nylon plug with a rubber gasket.

PART NO.	MATERIAL	A	B
54203	Nylon	1-1/2"	1"



SS 316 Garboard with Nylon Plug

PART NO.	MATERIAL	A	WEIGHT
54205	SS 316	2"	70g



Garboard Plug

- Allows quick drainage of boat when hauled out.
- 1/2" NPT tapered pipe threads ensure a watertight fit.

PART NO.	MATERIAL	A	WEIGHT
8074B	Brass	2"	118g
8074BP	Replaceable plug		
8074S	SS316	2"	118g
8074SP	Replaceable plug		



Drain Plug

Brass Drain Tube

- ▼ T-handle drain plug and flip-lock drain plug.

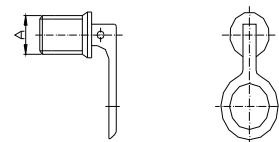
PART NO.	MATERIAL	A	B	WEIGHT
54183	Brass	1-7/8"	1"	25g
54184	Brass	3"	1"	40g
54182	Brass	3"	1-1/4"	45g



Flip-Lock Drain Plug

- ▼ Standard rubber and brass / SS plug fits many production boats.

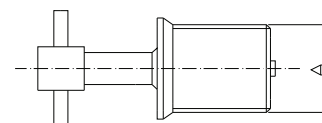
PART NO.	MATERIAL	A	WEIGHT
54191	Brass	1"	55g
54191S	SS 304	1"	50g
54192	Brass	1-1/4"	60g
54192S	SS 304	1-1/4"	55g



T-Handle Drain Plug

- ▼ Standard rubber and brass / SS plug fits many production boats.

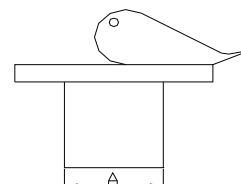
PART NO.	MATERIAL	A	WEIGHT
54193	Brass	1"	42g
54193S	SS 304	1"	40g
54194	Brass	1-1/4"	47g
54194S	SS 304	1-1/4"	45g



Brass Bait Well Plug

- ▼ This expanding rubber plug is for live well tanks and buoyancy tanks on day sailors and small thru-hulls

PART NO.	MATERIAL	A	WEIGHT
54195	Brass	3/4"	25g
54196	Brass	5/8"	23g
54197	Brass	1/2"	20g
54198	Brass	3/8"	20g
54199	Brass	7/8"	25g



SS 304 Combination Bow Light with Black Plastic Base

▼ For use on vessels under 39' in length approved by NMMA-meets ABYC standard

PART NO.	COLOR	BASE DIA.	HEIGHT	BULB
B80600	Red/Green	2-13/32"	1-25/32"	12V, 5W
B80600-B	Replacement Bulb For B80600-B80603			

**SS 304 Stern Light with Black Plastic Base**

▼ For use on vessels under 39' in length approved by NMMA-meets ABYC standard

PART NO.	COLOR	BASE DIA.	HEIGHT	BULB
B80601	Clear	2-13/32"	1-25/32"	12V, 5W

**SS 304 Side Light with Black Plastic Base**

▼ For use on vessels under 39' in length approved by NMMA-meets ABYC standard

PART NO.	COLOR	BASE DIA.	HEIGHT	BULB
B80602	Red	2-13/32"	1-25/32"	12V, 5W
B80603	Green	2-13/32"	1-25/32"	12V, 5W

**SS 304 Water Proof Flush Mount Transom Light—Round**

PART NO.	COLOR	BASE DIA.	BULB
7804S	Clear	3"	12V, 8W
7804-B	Replacement Bulb For 7804S		
7804R	Red	3"	12V, 5W

**SS 304 Waterproof Transom Light—Rectangular**

PART NO.	LENGTH	WIDTH	BULB
7805S	5-1/8"	3-1/8"	12V, 10W
7805-B	Replacement Bulb For 7805S		



Reading Light

PART NO.	MATERIAL	BASE	SHADE O.D.	HALOGEN
2106BH	Brass	3-1/2"	2-1/2"	12V, 10W
2106CH	Chrome-Plated Brass	3-1/2"	2-1/2"	12V, 10W
2106-BULB	Replacement Halogen Bulb			
2106-SW	Switch			

**Brass Reading Light**

PART NO.	BASE	SHADE O.D.	HALOGEN
2108BH	3-5/8"	3-7/8"	12V, 15W
2108-BULB	Replacement Halogen Bulb		
2108-SW	Switch		

**Brass Reading Light**

PART NO.	BASE	SHADE O.D.	BULB
2110B	3-5/8"	3-7/8"	12V, 20W
2110-BULB	Replacement Bulb		

**Brass Reading Light**

PART NO.	BASE	SHADE O.D.	BULB
2113B	3"	3"	12V, 15W
2114	Replacement Bulb		



Brass Reading Light

PART NO.	BASE	SHADE O.D.	HALOGEN
02956BT	1-27/32" x 2-1/8"	2-1/8"	12V, 10W

***Reading Light***

PART NO.	MATERIAL	BASE	LENS	HALOGEN
02956S	S.S.	3-1/2"	2-1/2"	12V, 10W
02956B	Brass	3-1/2"	2-1/2"	12V, 10W

***Brass Interior Light***

PART NO.	BASE	HALOGEN
04675B	2-27/32"	12V, 10W

***Teak/Brass Dome Light***

PART NO.	BASE	LENS DIA.
2120BT	6-1/8"	5"
2122BT	5-1/2"	4"

***Dome Light Lens***

PART NO.	COLOUR	LENS
2123	White	3-7/8"
2127	White	4-5/8"



Brass Dome Light 12V 15W with Optional Halogen Bulb

PART NO.	MATERIAL	BASE	LENS DIA.
2120B	Brass	6-7/8"	4-5/8"
2124	Replacement bulb		
2120BH	Same as 2120B with halogen bulb		
2108-BULB	Replacement Halogen Bulb		
2121BD	Same as 2120B with extra red bulb		
2124R	Replacement red bulb		



2122B	Brass	5-1/2"	3-7/8"
2122BH	Same as 2122B with halogen Bulb		

SS 304 Dome Light 12V 15W with Optional Halogen Bulb

PART NO.	MATERIAL	BASE	LENS DIA.
2124S	SS	6-7/8"	4-5/8"
2124	Replacement Bulb		
2124SH	Same as 2124S w/Halogen Bulb		
2108-BULB	Replacement Halogen Bulb		
2124SD	Same as 2124S w/extra red bulb		
2124SDH	Same as 2124SD w/Halogen Bulb		



2126S	SS	5-1/2"	3-7/8"
2126SH	Same as 2126S w/Halogen Bulb		

SS 304 Adjustable Spreader Light

PART NO.	LENS	HEIGHT	HALOGEN
2135SS	4-5/16"	4-5/16"	12V 35W
2135SS-B	Replacement Bulb For 2135SS		

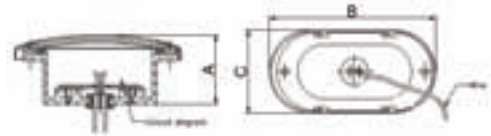
**SS 304 Fixed Spreader Light**

PART NO.	LENS	HEIGHT	HALOGEN
2137SS	4-5/16"	2-3/4"	12V 35W
2137SS-B	Replacement Bulb For 2137SS		



SS 304 Plated/Nylon Fixture LED Courtesy Light

Part NO.	Voltage	A	B	C
B80620LS	12V	1-1/4"	3"	1-1/2"
B80622LS	24V	1-1/4"	3"	1-1/2"

***Replacement Switch***

PART NO.	DESCRIPTION
2128	Dome light switch



Chrome-Plated Brass Electrical Connector

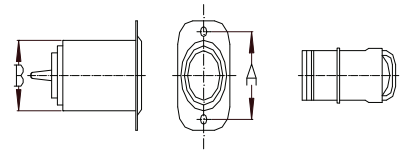
PART NO.	AMP	PIN
8202BC	3	3
8204BC	3	4
8208BC	5	3



Cigarette Lighter/Chart Light

▼ Stamped 304 stainless mounting plate.

PART NO.	A	B	FASTENER
55100	1-11/16"	1-1/8"	#8 RH



Battery Off/On Switch (Waterproof)

▼ RATING: 250A Continuous, 500A Intermittent up to 24VDC

PART NO.	MOUNT SIZE	CUT OUT SIZE
55105	2-9/16"	2-3/16"



SS 316 Drink Holder—Bottom Mount

- Fasteners are included for mounting between 1/8" to 1/2" thickness.
- For material thickness over 1-1/2" replace with marine-grade stainless steel fasteners to prevent corrosion.



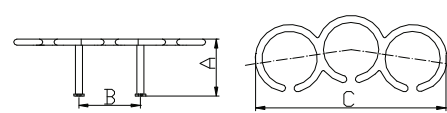
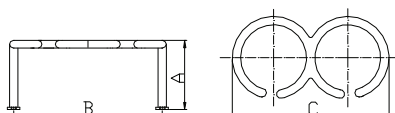
56222S



56220S



56224S

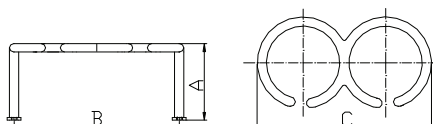


PART NO.	HOLDS	A	B	C
56220S	1 Cup	2-25/32"	3-27/32"	4-5/32"
56222S	2 Cups	2-25/32"	8"	8-1/8"
56224S	3 Cups	2-25/32"	4-1/4"	12-1/2"

SS 316 Drink Holder—Top Mount



56220ST

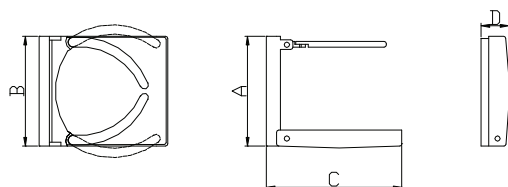


56222ST

PART NO.	HOLDS	A	B	C
56220ST	1 Cup	2-25/32"	3-27/32"	4-5/32"
56222ST	2 Cups	2-25/32"	8"	8-1/8"

SS 304 Folding Drink Holder

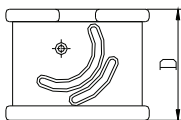
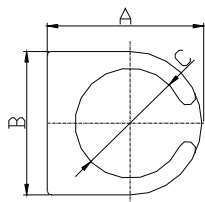
- Its compact design folds out of the way until you need it.
- This drink holder features an adjustable arm to accommodate almost any beverage container size.
- Mirror-polished face.



PART NO.	A	B	C	D
56210SS	4-1/4"	3-7/8"	4-1/8"	7/8"

Nylon Rail Mount Drink Holder

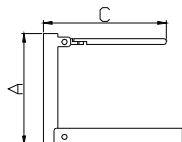
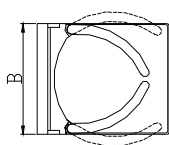
- ▼ This drink holder fits most boats with rails or stanchions.
- ▼ Adjustable to any angle.
- ▼ Patent Pending.



PART NO.	A	B	C	D	RAIL
56205A	4-7/8"	4-1/2"	3-1/2"	3-1/2"	7/8" or 1"
56205AS	Same as 56205A , but has three suction cup mounts on the base.				

ABS Folding Drink Holder

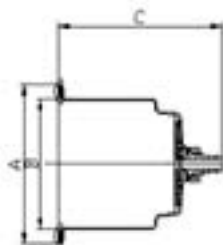
- ▼ Can be stored to an inch in height or folded out when needed.



PART NO.	A	B	C	D	COLOR
56210W	3-7/8"	4"	3-7/8"	1"	White
56210B	3-7/8"	4"	3-7/8"	1"	Black

SS 304 Drink Holder

- ▼ Nylon hose barb for 3/8" hose.
- ▼ Self-adhesive gasket included.
- ▼ Fits most cup holes.



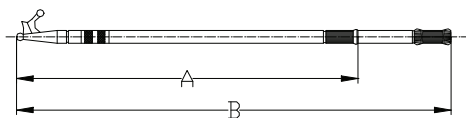
PART NO.	A	B	C
56228S	4-1/4"	3-1/2"	4-3/8"

Bronze Boat Hook

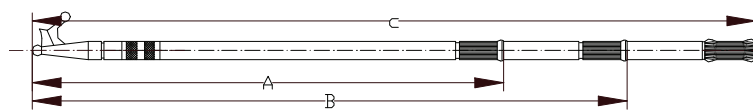
PART NO.	I.D. HOLE	LENGTH
1794B	1"	8-3/8"

**Deluxe Boat Hook**

- ▼ Injected Molded Nylon/Aluminum.



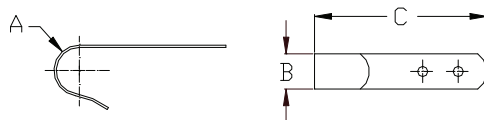
PART NO.	SECTIONS-TUBE DIA.	A	B
56304	2 Each: 1", 1-1/8"	49"	76"



PART NO.	SECTIONS-TUBE DIA.	A	B	C
56305	3 Each: 1", 1-1/8", 1-1/4"	42"	72-1/2"	92"

Boat Hook Bracket

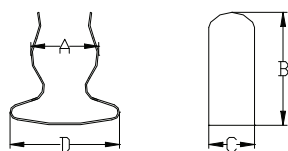
- ▼ Stamped 304 Stainless.



PART NO.	A	B	C	FASTENER
7715S	1-1/4"	1"	4"	1/4" PH

Boat Hook Clip

- ▼ Stamped 304 Stainless.



PART NO.	A	B	C	D	FASTENER
2938SS	3/4" - 1"	1-11/16"	7/16"	1-3/8"	#7 PH
2939SS	1" - 1-1/4"	2-3/8"	3/4"	1-13/16"	#7 PH

Bimini Top Tie-Down Nylon Strap

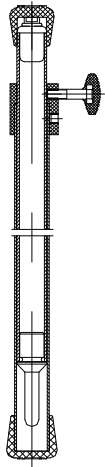
- Adjusts to fit most bimini tops.



PART NO.	DESCRIPTION	COLOR
56103W	1" x 96"	White
56103B	1" x 96"	Black

Boat Cover Support Poles

- Anodized aluminum telescope pole, quick and easy raise boat cover. 3-in-1.
- Prolong the life of your boat cover by preventing water pockets. These Aluminum telescoping poles have turning knobs that allow you to adjust and lock to the desired height



3-in-1 Adjustable

PART NO.	DIMENSION
56110AP	Adjusts from 28" to 55"
56111AP	Adjusts from 40" to 70"

Handheld Fog Horn

PART NO.	MATERIAL	LENGTH
02987S	Stainless	7"
02987B	Brass	7"

**Brass Cast Bell**

PART NO.	MATERIAL	DIA.
1791B	Brass	11"
1791BC	Chrome-Plated Brass	11"

**Brass Cast Bell**

PART NO.	MATERIAL	DIA.
1792B	Brass	6"
1792BC	Chrome-Plated Brass	6"
1793B	Brass	8"
1793BC	Chrome-Plated Brass	8"

**Heavy Duty Brass Cast Ship's Bell**

PART NO.	DIA.	WEIGHT
1795-10B	10"	16 lbs.
1795-12B	12"	20 lbs.

**Brass Commission Log**

PART NO.	SIZE
2101B	4-3/4"x5-1/4"

**Splicing Fids**

▼ SS with hardwood handle.

PART NO.	THK.	WIDTH	LENGTH
02932S	1.0	13/16"	6-11/16"
02932M	1.5	1-1/4"	11"
02932L	2.0	1-7/8"	15-3/8"



Rail Mounted Flag Staff

PART NO.	DIAMETER	LENGTH
02917S	1/2"	14"

***Rail Mounted Flag Pole Socket***

PART NO.	POLE DIAMETER	TUBE
02910S	7/8"	7/8"-1"

***SS 316 Flag Pole Socket—Top Mount***

PART NO.	BASE SIZE	I.D.	ANGLE
6140S	2-5/8"	1-1/4"	15 degrees
6141S	2-3/4"	1"	15 degrees

***SS 316 Flag Pole Socket—Flush Mount***

PART NO.	FLANGE	I.D.
6142S	2-7/8"	1-1/4"

***Rail Mount Brackets***

PART NO.	FITS TUBING
09202S	7/8"-1"

***Rail Mount Brackets with SS Plate***

PART NO.	FITS TUBING
09203S	7/8"-1"

***Universal Deck Fill Key***

- ▼ Serves as key for standard 1-1/2" to 2" deck fill caps.

PART NO.	WIDTH	LENGTH
02923S	2-1/4"	3-7/8"



Shackle Key

PART NO.	WIDTH	LENGTH
02924S	13/16"	4-3/8"

**Motor Flusher**

PART NO.	DESCRIPTION
56614	9" motor flusher w/SS clamp

**SS 316 Lock-In Winch Handle**

PART NO.	LENGTH
6400S	10"

**SS 316 Lifeline Pelican Hook**

PART NO.	WIRE SIZE	OVERALL LENGTH
6420S	1/8"	4-27/32"
6422S	3/16"	5-27/32"

**Wind-Proof Ashtray**

PART NO.	DIAMETER	COLOR
02911SR	4-1/8"x2"	Red
02911SB	4-1/8"x2"	Blue

**Marine Shock Cord Hook**

PART NO.	DIAMETER	LENGTH
02040S	5/16"	40"
02041S	5/16"	32"
02042S	5/16"	20"
02043S	5/16"	12"

**Nylon Winch Strap with Hook**

PART NO.	DESCRIPTION
58406	2x20'



Zamak-Plated Winch Cable with Hook


PART NO.	DESCRIPTION
58412	3/16x25'




***Wheel Bearing Protector***

PART NO.	DESCRIPTION
58600	1.98" w/SS internal parts 1.98"



Categories	Page(s)	Categories	Page(s)
Anchor Accessories		Canvas Top Fittings & Accessories	
Anchor Swivels	14	Eye Strap	30
Anchor Chain Tensioner	14	Take-Apart Jaw Slides	31 - 32
Chain Stoppers	15	Hinge Jaw Slides	31 - 32
		Top Caps	31 - 32
		Top Inserts	31 - 32
Anchor Rollers		Side Mount Deck Hinges	40 - 42
Fairlead Anchor Rollers	11	Side Windshield Mount	40 - 42
Narrow Anchor Rollers	12	Deck Hinge with Removable Pin	41 - 42
Pivoting Anchor Rollers	12	Angle Base Deck Hinges	41
Platform Anchor Rollers	12 - 13	Concave Base Deck Hinges	42
Wheel Replacements for Anchor Rollers	13	Toggle Pin with Lanyard	43
		Quick Release Pin with Lanyard	43
		Blue Knob Set Screw	43
		Bimini Top Tie-Downs	99
		Cover Support Poles	99
Antenna Mounts and Accessories			
Ratchet Mounts	1		
Rail Mounts	1 - 2	Chocks	
Swivel Mounts	2		
Standoff Brackets	2 - 3	Skene Angled Bow Chocks	27
Standoff Extensions	3	Bow Chocks	27
Extension Tubes	3	Angled Bow Chocks	27
Tube Base Antenna Mounts	3		
Fixed Antenna Base	3 - 4	Cleats	
Vertical Antenna Mount	4		
Horizontal Antenna Mount	4		
Plastic Shim	4 - 5	Humpback Cleats	24
Cable Outlets	5	Stud Cleats	24 - 25
Laydown Antenna Hook	5	Herreshoff Cleats	25
Microphone Clip	5	Mooring Cleats	26
Pitot Tube Shield	5		
		Deck Fills	
Boat Hooks			
Boat Hooks	98	Deck Fills (Stainless Steel)	79
Hook Brackets	98	Deck Fills (SS with Nylon Cap)	80
Hook Clips	98	Deck Fills (Nylon)	80
		Deck Fills (For Sailboats)	81
		Deck Fills (With Breathable Cap and Internal Vent)	81
Bow Eyes, Stern Eyes, and Ski Tows		Deck Fills (Angled)	81 - 82
Bow Eyes	29	Deck Fills (With Splash Guard)	82
Stern Eyes	29		
Transom Mount Ski Tow	29	Deck Pipes	
Brackets		Spring Hinged Deck Pipe	16
Table Brackets	62	Chain Deck Pipe	16
Folding Brackets	62		
Swim Platform Bracket	62	Deck Steps	
		Deck Steps	23
		Folding Steps	23
		Step Handles	23

Categories	Page(s)	Categories	Page(s)
Door and Cabinet Hardware		Hatch Fittings	
Door Holders	55	Hatch Spring Holders	72
Joined Cabin Door Hooks	55 - 56	Hatch Adjusters	72
Door Stops	56	Hatch Cover Pulls	72
Door Buttons	56	Hatch Fasteners	73
Barrel Bolt	57	Anti-Rattle Fasteners	73
Cabinet Catch	57	Turning Lock Lift Handles	74
Elbow Catch	57	Flush Pull Latch	74
Drawer Knob	57 - 58	Grab Handle	74
Wardrobe Hook	58		
Lockable Hasp	58	Hawse Pipes	
Swivel Hasp	58	Oval Hawse Pipes	17 - 18
 Push Button Cabinet Latch	61	Rectangular Hawse Pipes	17
		Hawse Pipes with Finish Ring and Cleat	17
Drain Plugs		Triangular Hawse Pipes	18
Drain Plugs	88		
Garboard Plugs	88	Hinges	
Drain Tubes	89	Hatch Hinges	48
Flip Lock Drain Plugs	89	Door Hinges	49
T-Handle Drain Plugs	89	Offset Hinges	50
Brass Bait Well Plugs	89	Butt Hinges	51
		Strap Hinges	52
Drink Holders		Take Apart Hinges	53 - 54
Top Mount	96	Flush Hinges	54
Bottom Mount	96	Miscellaneous Hinges	50 - 54
Folding	96 - 97		
Rail Mounted	97	Lights	
		Combination Bow and Stern Lights	90
Electrical Accessories		Side Lights	90
Electrical Connectors	95	Transom Lights	90
Cigarette Lighters/Chart Lights	95	Reading Lights	91 - 92
Battery On/Off Switches	95	Interior Lights	92
		Dome Lights	92 - 93
Fuel Vents		Spreader Lights	93
Fuel Vents (Straight)	83	LED Courtesy Lights	94
Fuel Vents (90 Degree)	83	Light Switches	94
		Lock & Latch Sets	
Hand Rail Stanchion		Door Lock Sets	59
Rail Stanchions	35	Sliding Door Lock Sets	60
		Miscellaneous	
Hand Rails		Fog Horns	100
Oval Handrail Tube	44	Bells	100
Oval Tube Connector	44	Commission Logs	100
Oval Handrail Tube	44	Splicing Fids	100
Handrail with Flange and Stud	45	Flag Staffs	100
Handrail with Threaded Flange	45	Rail Mount Brackets	101
		Universal Deck Fill Keys	102
		Shackle Keys	102
		Motor Flushers	102
		Pelican Hooks	102
		Ashtrays	102
		Wheel Bearing Protectors	103
		Winch Cables	102 - 103

Categories	Page(s)	Categories	Page(s)
Ladders		Rub Rails	
Telescoping Ladders	20 - 22	Hollow Back	46
Transom Ladders	20	Half Oval Rub Rail	46
Sliding Ladders	21	Rub Strakes	47
Under Platform Mount Ladders	22		
Transom Gudgeons	22	Stanchion Cap & Base	
Lift Eyes & Slings		Cylindrical Tip Stanchions	38
Lift Eyes	28	Tapered Tip Stanchions	38
Slings	28	Gate Stanchions	38
		Stanchion Base	38 - 39
		Stanchion Cap	39
		Bullet End	39
Mooring Bitt		Steering Wheels & Engine Control	
Mooring Bitt with Release Pin	19	Heavy Duty Steering Wheels	64
Bolt Through Mooring Bitts	19	Sport Wheels	64
		Destroyer Wheels	65
Pad Eyes		Sailboat Wheels	66
Diamond Pad Eye	30	Shaft Adapters	66
Oblong Pad Eye	30	Control Knobs	66
Folding Pad Eye	30	Engine Controls	67
Portlights and Deck Hatches		Thru-Hulls	
 Rectangular Opening Ports	68	Thru Hulls	84 - 86
 Luxury Deck Hatches	69 - 70	Transom Exhaust Pipes	86
 SS Portlights	71	Pipe to Hose Adapters	87
Bronze Portlights	71	Intake Strainers	87
Rail Fittings		Ventilation	
Round Rail Base with Set Screw	33	Bilge Blowers	75
Rectangular Rail Base with Set Screw	33	Cowl Vents	75
Round Base for Welding	34	Deck Plates	75 - 76
Rectangular Base for Welding	34	Midget Vents	76
Handrail Tee	36	Butterfly Vents	76
Handrail Elbow	36	Louvered Vents	77 - 78
Handrail Bow Form	37	Slotted Vents	77 - 78
Handrail End	37	Drain Covers	78
Tube Connector	37		
Ring Pulls and Lift Handles			
Spring Loaded Flush Lift Handles	63		
Ring Pulls	63		
Lift Handles	63		
Rod Holders			
Slimline Rod Holders	6		
Heavy Duty Flush Mount Rod Holders	6		
Standard Flush Mount Rod Holders	7 - 8		
Clamp-On Rod Holders	8		
Removable Rod Holders	9		
Outrigger Pole Holders	9		
Storage Racks	9 - 10		
Gimbals	10		

Product No.	Page No.	Product No.	Page No.	Product No.	Page No.	Product No.	Page No.
01232RG	72	1068B	87	2066B	73	2414SS	55
01232SPE	72	1069B	87	2066SS	73	2600S	55
01781SP	72	1073B	87	2070B	56	2846B	58
01782SP	72	1074B	87	2070S	56	2847B	58
01783SP	72	1076B	87	2072B	57	2849B	58
02040S	103	1078B	87	2072S	57	2938SS	98
02041S	103	1079B	87	2074B	57	2939SS	98
02042S	103	1080B	87	2076B	55	4020BC	56
02043S	103	1081B	87	2080B	56	4022B	58
02321S	30	1082B	87	2082B	56	50015S	10
02322S	30	1083B	87	2084B	56	50016S	10
02323S	30	1182B	71	2086B	56	50100B	8
02341S	30	1184B	71	2088B	56	50100W	8
02342S	30	1200B	18	2089B	56	50120W	9
02343S	30	1202B	18	2098B	57	50712SR	23
02910S	101	1300B	75	2098BC	57	50712SR-R	23
02911SB	102	1300B/82B	75	2099B	57	50718SR	23
02911SR	102	1303B	75	2099BC	57	50718SR-R	23
02912S	72	1303B/80B	75	2099S	57	50720SS	47
02912SW	72	1350KY	75	2100B	57	50721SS	47
02913S	72	1350SK-R	75	2100BC	57	50722SS	47
02913SW	72	1350SK-W	75	2101B	100	50723SS	47
02914S	72	1360SK-R	75	2106BH	91	50724BC	23
02914SW	72	1360SK-W	75	2106-BULB	91	50724SS	23
02915S	72	1380B	75	2106CH	91	50726	23
02915SW	72	1382B	75	2106-SW	91	53040CZ	24
02916SW	72	1384BC	76	2108BH	91	53050CZ	24
02917S	101	1393B	76	2108-BULB	91	53051CZ	24
02923S	102	1740B	48	2108-BULB	93	53061CZ	24
02924S	102	1791B	100	2108-BULB	93	53220N	10
02926S	30	1791BC	100	2108-SW	91	53222N	10
02927S	30	1792B	100	2114	91	53230S	9
02932L	100	1792BC	100	2110B	91	53232S	9
02932M	100	1793B	100	2110-BULB	91	53300SL	8
02932S	100	1793BC	100	2113B	91	53302SC	9
02933B	101	1794B	98	2123	92	53302SH	9
02950S	30	1795-10B	100	2124	93	53305S	9
02951S	30	1795-12B	100	2124	93	53305SB	9
02952S	30	2030HB-L	53	2127	92	53301SS	8
02956B	92	2030HB-R	53	2128	94	53302S	9
02956BT	92	2030HS-L	53	2120B	93	53302SB	9
02956S	92	2030HS-R	53	2120BH	93	53305SH	9
02987B	100	2030KB-L	54	2120BT	92	53310S	6
02987S	100	2030KB-R	54	2121BD	93	53315S	6
04675B	92	2032HB-L	53	2122B	93	53316S	6
07435ES	54	2032HB-R	53	2122BH	93	53317S	7
09202S	101	2032KB-L	54	2122BT	92	53320S	6
09203S	101	2032KB-R	54	2124R	93	53320SC	6
1048B	86	2034HB-L	53	2124S	93	53321S	6
1050B	86	2034HB-R	53	2124SD	93	53321SC	6
1052B	86	2034HS-L	53	2124SDH	93	53322S	6
1054B	86	2034HS-R	53	2124SH	93	53322SC	6
1056B	86	2034KB-L	54	2126S	93	53340P	8
1060B	87	2034KB-R	54	2126SH	93	53341NF	8
1061B	87	2036B-L	53	2135SS	93	53341P	8
1062B	87	2036B-R	53	2135SS-B	93	54182	89
1063B	87	2050B	74	2137SS	93	54183	89
1064B	87	2051B	74	2137SS-B	93	54184	89
1064SPE	87	2051S	74	2400B	55	54191	89
1065B	87	2058B	63	2400BC	55	54192	89
1065SPE	87	2060B	63	2400SS	55	54193	89
1066B	87	2062B	73	2410SS	55	54194	89
1067B	87	2064B	73	2412SS	55	54195	89

Product No.	Page No.	Product No.	Page No.	Product No.	Page No.	Product No.	Page No.
54196	89	57020CZ	82	6006SAIL	81	6110S	49
54197	89	57020CZ-C	82	6006SEU	79	6112SL	53
54198	89	57738S	7	6006SPC	80	6112SR	53
54199	89	57738SR	7	6007-30S	82	6114BC	51
54191S	89	57739S	8	6007-30S-GSK	82	6114S	51
54192S	89	57739SR	8	6007S	79	6116BC	51
54193S	89	58406	103	6007SEU	79	6116S	51
54194S	89	58412	103	6008S	79	6117S	51
54200	88	58600	103	6008SEU	79	6117SR	51
54201	88	58700B	32	6009S	79	6118S	51
54202	88	58700W	32	6009S2EU	79	6118SR	51
54203	88	58701B	32	6009SAIL	81	6120S	52
54205	88	58701W	32	6009SEU	79	6121S	52
55100	95	58703B	32	6009SK	79	6122S	52
55105	95	58703W	32	6015S	38	6126S	50
56090T	43	58704B	32	6016S	38	6140S	101
56090T-LE	43	58704W	32	6017SL	38	6141S	101
56090T-LY	43	58706B	32	6017SR	38	6142S	101
56093P	43	58706W	32	6018S	38	6200S	17
56093P-LE	43	58707B	32	6019S	39	6202S	17
56093P-LT	43	58707W	32	6020S	39	6204S	17
56094P	43	58710B	42	6024S	24	6206S	18
56094P-LE	43	58710W	42	6025S	25	6208S	18
56094P-LT	43	58720B	42	6026S	25	6210S	17
56095P	43	58720W	42	6026SPE	25	6211S	17
56095P-LE	43	58824B	77	6027S	25	6231S	28
56095P-LT	43	58824W	77	6027SPE	25	6231S-L	28
56097E	43	58825B	77	6028S	25	6306SKT	75
56097T	43	58825W	77	6030S	25	6322S	28
56098R	43	58828B	78	6032S	25	6324S	28
56098W	43	58828W	78	6034S	25	6325S	28
56103B	99	58829B	77	6036S	25	6325S-C	28
56103W	99	58829CH	77	6037S	25	6330S	30
56105S	30	58829W	77	6038S	25	6332S	30
56105SPE	30	6000S	82	6039S	25	6334S	30
56106S	30	6000S-C	82	6040S	25	6340S	30
56107S	30	6002CAP	80	6041S	26	6342S	30
56110AP	99	6002NPC	80	6042S	26	6344S	30
56111AP	99	6002S	79	6044S	26	6361S	75
56135SP	7	6002S2CG	81	6046S	26	6361SD	75
56135SP00	7	6002S2EU	81	6048S	26	6362S	75
56135SP15	7	6002SAIL	81	6050S	27	6362SD	75
56136SP	7	6002SEU	79	6052SH	27	6400S	102
56136SP00	7	6002SPC	80	6054S	27	6420S	102
56136SP15	7	6004CAP	80	6060S	27	6422S	102
56136SPC	7	6004NPC	80	6062S	27	6500S	58
56136SPC15	7	6004S	79	6064S	27	6502S	58
56138S	7	6004SAIL	81	6070S	27	6503S	58
56138SR	7	6004SEU	79	6072SP	27	6506N	1
56205A	97	6004SPC	80	6074S	27	6508S	1
56205AS	97	6005-30S	82	6080S	48	6510S	1
56210B	97	6005-30SPE	82	6082S	48	6520S	1
56210SS-1	96	6005CAP	80	6084S	48	6522S	1
56210W	97	6005NPC	80	6084SPE	48	6522S-L	1
56220S	96	6005S	79	6086S	52	6524N	2
56220ST	96	6005S-ACV	81	6090S	63	6525S	2
56222S	96	6005S-ACVP	81	6090S-N	63	6526S	2
56222ST	96	6005SEU	79	6092S	63	6527S	2
56224S	96	6005SPC	80	6094S	63	6528S	2
56228S	97	6006CAP	80	6100S	50	6529N	3
56304	98	6006NPC	80	6104S	49	6530N	3
56305	98	6006S	79	6106S	49	6530S	3
56614	102	6006S-ACV	81	6108S	49	6531S	3

Product No.	Page No.	Product No.	Page No.	Product No.	Page No.	Product No.	Page No.
6532S	3	6804SH	31	6861S	35	7100-A	61
6533S	3	6810HD	31	6861S-P	35	7100-B	61
6534S	3	6810S	31	6861S-S	35	7100-C	61
6535S	4	6810SEU	31	6862S	35	7100-DG	61
6538N	4	6811HD	31	6862S-P	35	7100-DS	61
6538S	4	6811S	31	6862S-S	35	7100-E	61
6539S	74	6811SEU	31	6865S	35	7100-EG	61
6548S	4	6813SEU	32	6865S-P	35	7100-F	61
6549S	4	6815HD	31	6865S-S	35	7100G	61
6552N	5	6815S	31	6866S	35	7100S	61
6554N	5	6815SEU	31	6866S-P	35	7120S	74
6556BC	5	6816HD	31	6867S	35	7120SR-2	74
6558BC	5	6816S	31	6867S-P	35	7121S	74
6560S	5	6816SEU	31	6867S-S	35	7121SR-6	74
6562S	5	6817SEU	32	6870S	36	7121SR-9	74
6564S-1	76	6820S	32	6871S	36	7308	65
6566S-1	76	6821S	32	6872S	36	7300SCK	66
6568S	5	6822S	32	6873S	36	7302SFG	65
6597S	57	6824S	40	6876S	36	7303SFG	65
6598S	57	6825S	40	6877S	36	7319SRK	64
6599S	57	6826S	40	6878S	36	7320SRK	64
6600BC	83	6828S	40	6879S	36	7327NT	64
6600S	83	6829S	41	6884S	37	7328NT	64
6601BC	83	6830S	41	6886S	37	7329NT	64
6601S	83	6830S-PIN	41	6890S	37	7342SFGK	64
6601SCVR	83	6831S	41	6891S	37	7343SFGK	64
6602BC	83	6832S	41	6895S	37	7350SRK	64
6602S	83	6834S	41	6896S	37	7352SRK	64
6602SCAP	83	6836S	42	6897S	39	7406	65
6602SCVR	83	6836SRP	42	6899S	39	7407	65
6603S	83	6839S	42	7082A20	68	7400PC	65
6603SCAP	83	6840S	33	7082A20-ADJ	68	7401PC	65
6604CZ	83	6841S	33	7083SN	68	7402BFC	65
6604S	83	6841STPED	34	7085A10	68	7402GFC	65
6650N	85	6842S	33	7085A15	68	7402PC	65
6650S	84	6842STPED	34	7085A20	68	7402PC10	65
6650S-L	84	6843S	33	7086SN	68	7402SPC	65
6651N	85	6843STPED	34	7087A15	68	7402SPC10	65
6651N-90	85	6845S	33	7087A20	68	7403BFC	65
6651S	84	6846S	33	7087S15	68	7403GFC	65
6651S-L	84	6846STPED	34	7088SN	68	7403PC	65
6651S-LWM	86	6847S	33	7089A15	68	7403SPC	65
6651S-MESH	86	6847STPED	34	7089A15-ADJ	68	7405PC	65
6652N	85	6848S	33	7089A20D	68	7406-PC	65
6652S	84	6848STPED	34	7089A20D-ADJ	68	7406SA	65
6652S-L	84	6850S	33	7090SN	68	7406-SPC	65
6653N	85	6851S	33	7091A20	68	7408BFC	65
6653N-90	85	6851STPED	34	7091A20-ADJ	68	7408GFC	65
6653S	84	6852S	33	7091A25-ADJ	68	7501	66
6653S-L	84	6852STPED	34	7091A275	68	7502	66
6654N	85	6853S	33	7091A275-ADJ	68	7503	66
6654S	84	6853STPED	34	7092SN	68	7504	66
6654S-L	84	6855S	33	7093A15	68	7505	66
6655N	85	6856S	33	7093A20	68	7506	66
6655N-90	85	6856STPED	34	7094SN	68	7507	66
6655S	84	6857S	33	7096A10	68	7508	66
6655S-L	84	6857STPED	34	7096A15	68	7509	66
6656N-SCP	85	6858S	33	7096A20	68	7514	66
6700S	19	6858STPED	34	7097SN	68	7549	66
6702S	19	6860S	35	7122	68	7550	66
6800S	31	6860S-P	35	7124	68	7550U	13
6802S	31	6860S-S	35	7126	68	7551U-A	13
6802SH	31	6861S	35	7100-01-DK	57	7551U-B	13

Product No.	Page No.	Product No.	Page No.	Product No.	Page No.	Product No.	Page No.
7558U	13	7804S	90	8208BC	95	B80600	90
7560U	13	7805-B	90	8521SS	67	B80600-B	90
7564U	13	7805S	90	8521SS-AW	67	B80601	90
7565S	19	7846S-B	29	8522SS	67	B80602	90
7566S	19	7848S-B	29	8522SS-KIT	67	B80603	90
7567S	19	7848S-D	29	8523SK-B	67	B80620LS	94
7570S	86	7848S-S	29	8523SK-R	67	B80622LS	94
7571S-TWC	86	7850S-B	29	8523SS	67	BOB403	75
7573S-TWC	86	7850S-S	29	8523SS-AW	67	BOW403	75
7574S	86	7852S-B	29	AR7550S	11	LDH-08-I	70
7713ES	54	7852S-S	29	AR7552S	11	LDH-10-I	70
7715S	98	7854S-B	29	AR7557S	12	LDH-20-I	70
7719ES	49	7856S-B	29	AR7561S	12	LDH-30-I	70
7720ES	51	7858S-B	29	ARCS-01	11	LDH-30-O	70
7720S-L-CT	76	7859S-BL	29	ARSST-01	11	LDH-40-I	70
7720S-L-SD	76	7861S-S	29	ARSST-02	11	LDH-40-O	70
7720S-S-CT	76	7863S-B	29	ARSW-02	11	LDH-50-D	70
7720S-S-SD	76	7866S-BL	29	ARSW-03	11	LDH-50-I	70
7721ES	54	7867S-S	29	ARSW-04	13	LDH-50-O	70
7721S	77	7870S	44	ARSW-05	13	LDH-60-D	70
7722ES	49	7872S	44	ARSW-06	13	LDH-60-I	70
7722S	77	7873S	44	ARSW-07	11	LDH-60-O	70
7723ES	50	7875S	44	ARWB-02	13	LDH-70-D	70
7723S	77	7878S	44	ARWB-03	13	LDH-70-I	70
7723SV	77	7881S	45	ARWC-01	12	LDH-70-O	70
7724ES	50	7881S-L	45	ARWU-02	12	LSR-0600	71
7725ES	50	7882S	45	ARWU-03	12	LSR-0800	71
7726ES	54	7882S-L	45	ARWU-04	12	LSR-1000	71
7726S-8	77	7884S	45	AS7500S	15	S12-200	44
7727ES	52	7886S	45	AS7501S	15	S12-202	44
7727S-5	78	7888S	45	AS7502S	15	S12-204	44
7728ES	52	7889S	45	AS7510S	16	S12-400	59
7728S	78	7890S	45	AS7511	16	S12-402	59
7729ES	52	7892S	45	AS7511-C	16	S12-410	60
7730ES	51	7892SPE	45	AS7511S	16	S12-412	60
7731ES	50	7895S	45	AS7511S-C	16	S304-451	46
7731SR	22	7895SPE	45	AS7520S	16	S304-455	46
7732ES	54	7899S	45	AS7521B	16	S304-457	46
7732S	22	7899SPE	45	AS7521BC	16	S304-459	46
7732SL	22	7994S	62	AS7521B-C	16	S304-471	46
7732SR	22	7995S	62	AS7521BC-C	16	S304-475	46
7734S	22	7996S	62	AS7530S	14	S304-477	46
7734SL	22	8074B	88	AS7532S	14	S304-479	46
7734SR	22	8074BP	88	AS7536S	14	S316-451	46
7735S	22	8074S	88	AS7538S	14	S316-455	46
7735SL	22	8074SP	88	AS7540S	14	S316-457	46
7736S	22	8088BC	73	B00301CHA	20	S316-459	46
7736SR	22	8090BC	73	B00301R	21	S316-471	46
7737S	22	8091BC	73	B00301R-5	21	S316-475	46
7737SPE	22	8095BC	74	B00301SLD	21	S316-477	46
7740S	63	8099BC	57	B00301WH	22	S316-479	46
7742S	63	8110BC	56	B00311CHA	20	S316L-461	46
7743S	63	8120BC	56	B00311R	21	S316L-465	46
7750S	58	8122BC	56	B00311-SLD	21	S316L-467	46
7751S	58	8124BC	56	B00330	22	S316L-469	46
7752S	58	8126BC	56	B00330-G	22		
7767S	29	8128BC	56	B00331	22		
7767SPE	29	8130B	68	B00331-G	22		
7768S	29	8130BC	68	B00333	22		
7769S	29	8131B	68	B00351R	20		
7772S	29	8188BC	56	B00351WH	22		
7804-B	90	8202BC	95	B00361	20		
7804R	90	8204BC	95	B00361-G	20		



Notes





Notes





Notes





MARINE DEPOT

**WEST COAST
MARINE DEPOT, INC**
14716 Central Avenue
Chino, CA 91710
Tel: (888) 709-5338
Fax: (909) 393-2009
md@marinedepot.us



WHITE WATER MARINE HARDWARE

**EAST COAST
WHITE WATER MARINE HARDWARE, INC**
13663 Automobile Boulevard
Clearwater, FL 33762
TEL: (800) 572-8871
FAX: (727) 572-1211
whitewatermh@verizon.net

www.whitewatermh.com