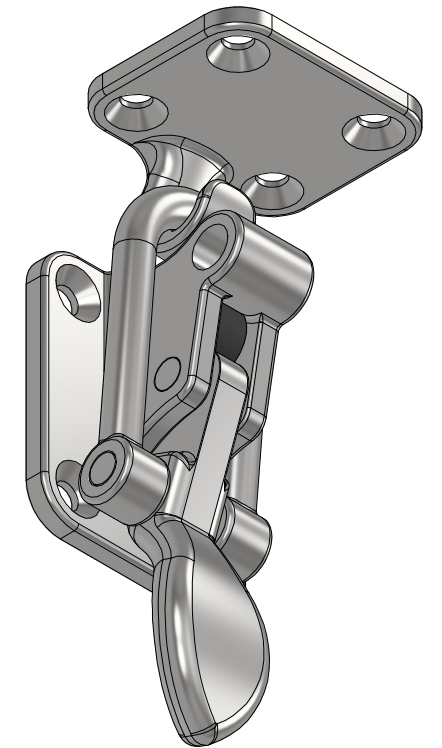
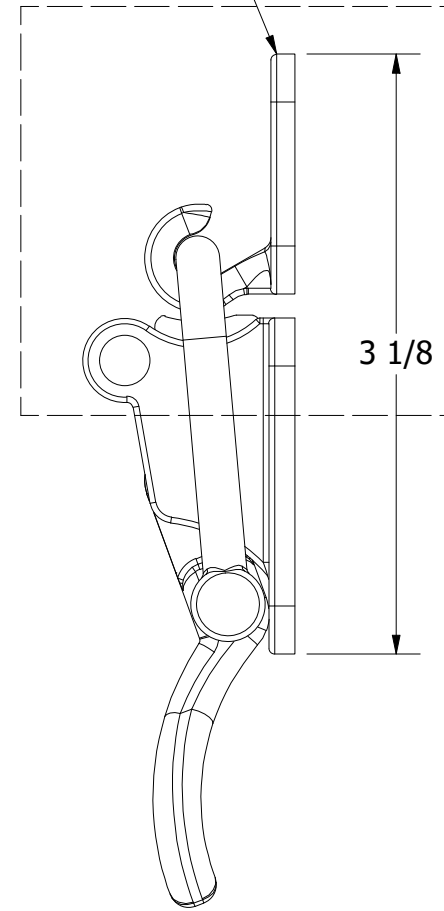
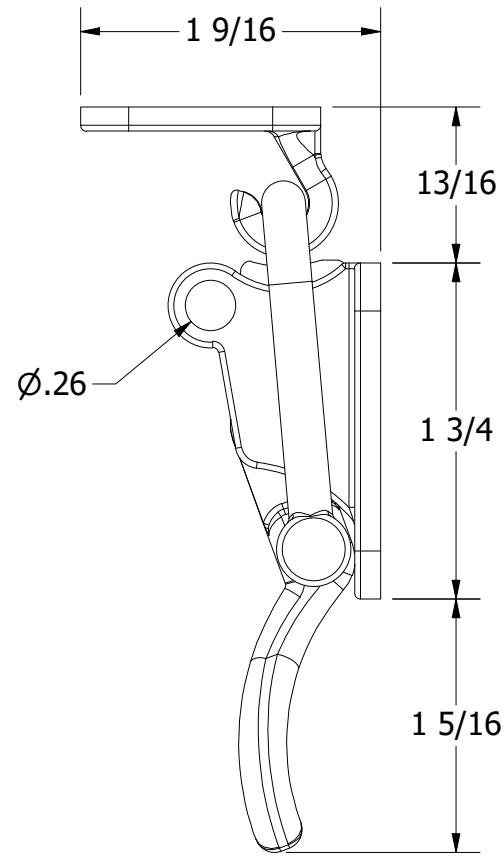
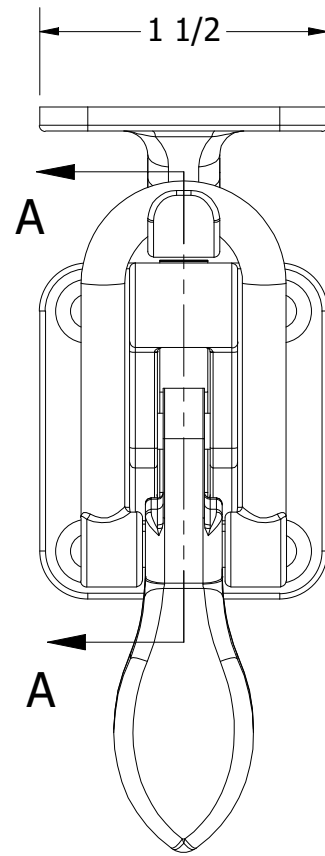


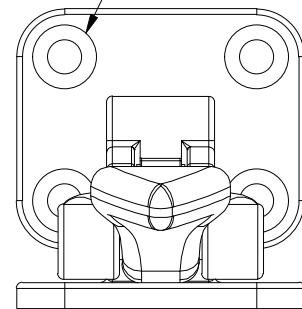
NOTES:

1. MATERIAL: 316SS
2. FINISH: HIGH POLISH

ALSO INSTALLS ON FLUSH SURFACES



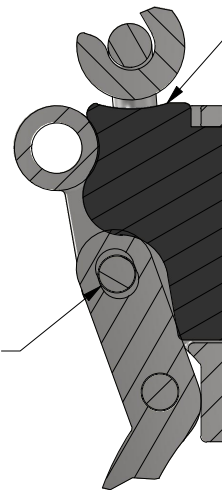
CLEARANCE FOR #8 FH



BUMPER REDUCES SLAMMING

RUBBER INSERT

SLOTTED FOR COMPRESSION



SECTION A-A
SCALE 1 : 1

UNLESS OTHERWISE SPECIFIED:
BREAK ALL SHARP EDGES
DIMENSIONS ARE IN INCHES
TOLERANCES:
FRACTIONAL: ± 1/16
DECIMAL: X.X ± .05
 X.XX ± .03
 X.XXX ± .010
ANGULAR: ± 3°
FINISH: 120Ra

PROPRIETARY AND CONFIDENTIAL
THE INFORMATION CONTAINED IN THIS
DRAWING IS THE SOLE PROPERTY OF WHITE
WATER MARINE HARDWARE. ANY REPRODUCTION
IN PART OR AS A WHOLE WITHOUT WRITTEN
PERMISSION IS PROHIBITED.



WHITE WATER
MARINE HARDWARE

TITLE

ANTI-RATTLE TRUNK LATCH
PART NUMBER: 2067S (RD296)

SIZE
B

DRAWING NO.

WWMH-2067S

REV
0

SCALE 1 : 1

DRAWN KSR

DATE 11/19/2025

SHEET 1 OF 1