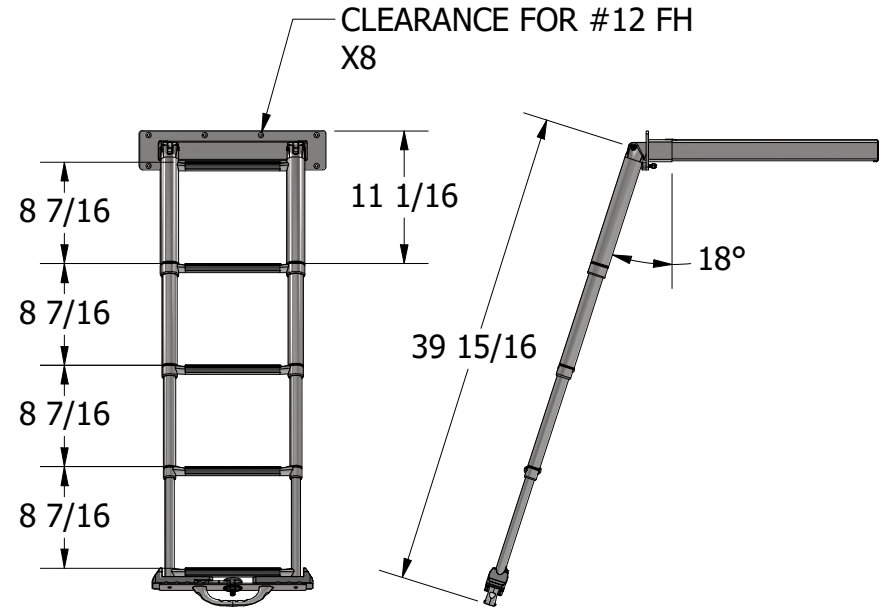
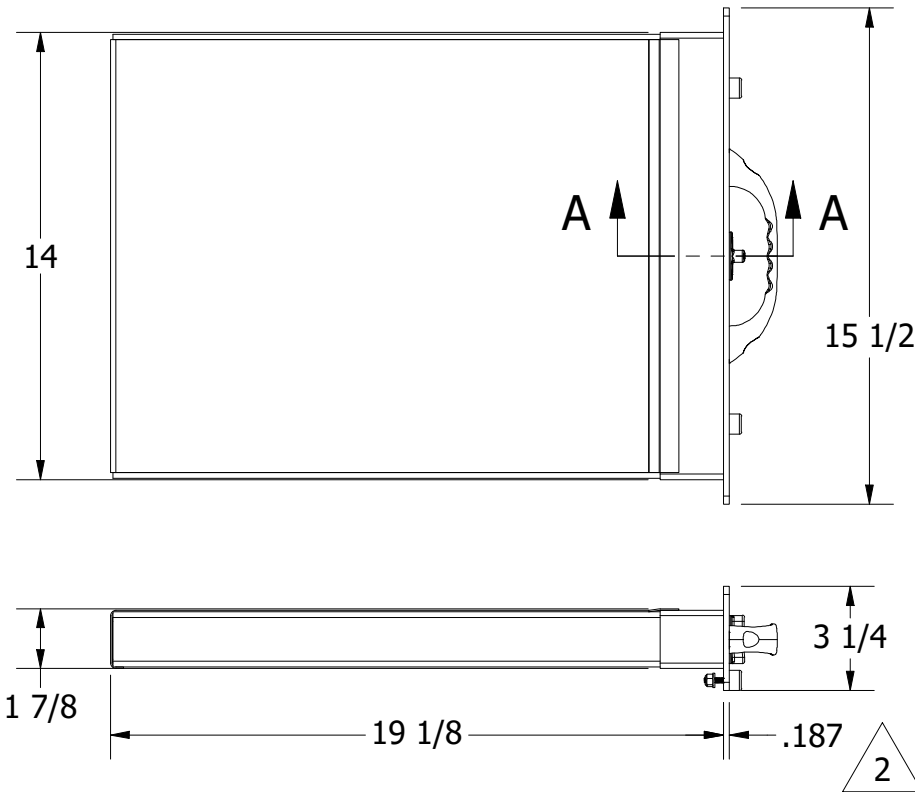


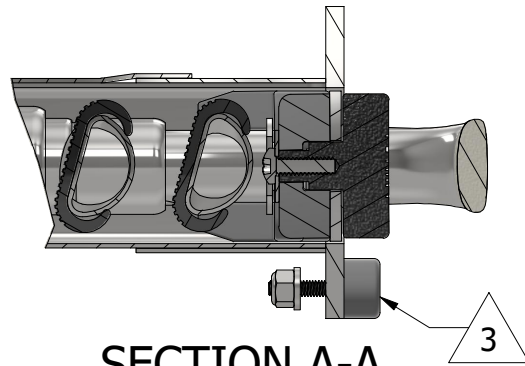
NOTES:

1. MATERIAL: 316SS
2. FINISH: HIGH POLISH
3. INSTALL THREADED FASTENERS USING LOCTITE 242 OR EQUIVALENT

REVISION HISTORY		
REV	DESCRIPTION	DATE
2	SEVERAL UPDATES TO MATCH TOOLING, REPLACE BARREL BOLT WITH THREADED SPACER, ECN1057	1/14/26
3	ALIGN HOLES IN FACEPLATE WITH MODELED BUMPER POSITION	3/12/26



DEPLOYED VIEW
SCALE 1 : 16



SECTION A-A
SCALE 1 : 2

UNLESS OTHERWISE SPECIFIED:
BREAK ALL SHARP EDGES
DIMENSIONS ARE IN INCHES
TOLERANCES:
FRACTIONAL: $\pm 1/16$
DECIMAL: X.X $\pm .05$
 X.XX $\pm .03$
 X.XXX $\pm .010$
ANGULAR: $\pm 3^\circ$
FINISH: 120Ra

PROPRIETARY AND CONFIDENTIAL
THE INFORMATION CONTAINED IN THIS DRAWING IS THE SOLE PROPERTY OF WHITE WATER MARINE HARDWARE. ANY REPRODUCTION IN PART OR AS A WHOLE WITHOUT WRITTEN PERMISSION IS PROHIBITED.



WHITE WATER
MARINE HARDWARE

TITLE			
MAILBOX LADDER WITH GRAB HANDLE			
PART NUMBER: B00351HML			
SIZE	DRAWING NO.	REV	
A	WWMH-B00351HML	3	
SCALE	DRAWN	DATE	SHEET 1 OF 2
1 : 6	KSR	12/12/2025	